

Sensormatic®

An abstract graphic in the bottom left corner consisting of several concentric, curved lines that sweep upwards and to the right, creating a sense of motion or a stylized wave.

Solutions Portfolio

Sensormatic®

Improving supply chain visibility and efficiency has long been a quest of consumer goods manufacturers and retailers alike. Today both those aims are possible, thanks to the complementary applications of Radio Frequency Identification (RFID) technologies and Electronic Article Surveillance (EAS). Sensormatic RFID solutions provide inventory tracking and tracing capability to move goods to the shelf while our EAS solutions ensure inventory does not leave the store until it is purchased.

For more than 30 years, the Sensormatic brand has been known for delivering the highest level of protection for merchandise and assets. Our market-leading EAS systems featuring our patented Ultra-Max acousto-magnetic technology are relied upon by the majority of the world's top 100 retailers. More than 10 million Sensormatic tags a day are applied to a wide variety of goods at their source of manufacturing or packaging.

Now we have extended the value of our EAS systems with SmartEAS applications. These solutions tie together EAS, POS and other devices such as digital video recorders. Captured data can then be linked and reported to improve the effectiveness of your existing EAS system as well as increase operating efficiencies and outsmart internal thieves.

Our applications of RFID root technologies go back 15 years, especially for asset tracking. Recent years have seen us apply our RFID know-how to monitoring goods along the entire supply chain via our Sensormatic portfolio of RFID labels, readers, antennas and software. Together with services and support, Sensormatic RFID products provide a complete physical foundation solution for delivering reliable, tracking data to your warehouse and enterprise IT systems.

The Sensormatic brand is part of the global family of products and services from Tyco Fire & Security, a worldwide leader in electronic security and fire protection which generates almost a third of Tyco International's \$40.2 billion in annual revenues.

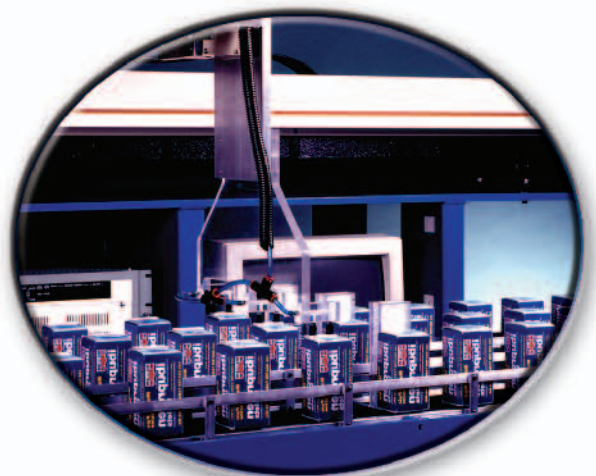
Being part of Tyco helps ensure your Sensormatic solution can be serviced and supported around the world, while continued R&D investments will drive innovations that increase its value to your business in the future.



Retail



Distribution



Manufacturing

Sensormatic®

EAS

Stop Your Stock From
Walking Out Your Door





EAS

Stop Your Stock From Walking Out Your Door

Sensormatic® Electronic Article Surveillance (EAS) solutions are designed to help retailers boost their sales and profits by increasing open merchandising opportunities and reducing theft.

Our EAS solutions are engineered and manufactured for superb detection and deactivation performance, durability, ease-of-use and aesthetics. They coordinate a range of components – hard tags or labels, deactivators, detachers and detector antennas – all tied together by our renowned *Ultra•Max*® acousto-magnetic technology, the loss prevention choice of the world's largest retailers.

Sensormatic EAS solutions are designed in multiple formats to achieve the look, feel, and performance that work best within a wide variety of store designs. They can suit retailers of all types, from large multinational retailers with wide exits to small, independent store owners with single- or double-door exits.

In fact, more than 500,000 systems are installed worldwide, primarily, but not exclusively in the retail market. This includes the exits and checkout lanes of apparel, drug, discount, home centers, hypermarkets, food and entertainment stores.

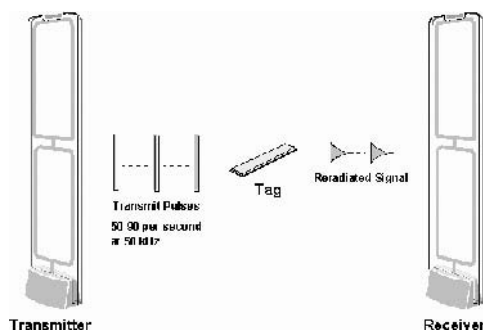
We continue investing heavily in R&D to develop new advanced designs and aesthetic enhancements as well as to increase our solutions' price-performance in almost any environment. Doing so helps us bring you the very best EAS solutions to help keep your shelves full and your stock in-store until paid for, so your retail operations can be as profitable as possible.



How Does A Sensormatic EAS Solution Work?

EAS anti-theft protection is a process that begins by attaching detectable labels or hard tags to merchandise, either in-store or via *source-tagging* during manufacturing or packaging.

Simply put, when an item is bought, the label is deactivated or the hard tag is removed. However, should a thief carry merchandise with an active label or hard tag past an EAS detector, the antenna in the detector will recognize the label or tag and sound an alarm.



EAS Detection

A *Sensormatic* EAS system uses one or more pedestals or antennas configured to create a surveillance zone at exits or checkout lanes. Our *Ultra•Max* acousto-magnetic technology allows for wider separation between antennas, has a low backfield to allow merchandising close to the system without sounding an alarm, and can detect tags and labels in a foil-lined bag or metal shopping cart. Acousto-magnetic technology was designed in response to the weakness of existing EAS technologies at the time. *Ultra•Max* improved on many of the previous technologies in the areas of detection, wider exit coverage, better false alarm immunity and hard tag and label solutions for every retail sector.

Our offerings include pedestal systems for checkout lane or exit coverage and visible deterrence, as well as discreet and concealed systems for less visible or hidden detection. Our portfolio is designed to provide the retailer with the best product for their specific application.

NOTE: Throughout the catalog systems noted as either US or Non-European can be used in Asia Pacific, Latin America, and Middle East regions.

Sensormatic Non-European Detection Systems

Product Name	Exit Widths*			Page Number
	0-6.5' (0-2m)	6.6'-10' (2-3m)	10' - 18' (3-5.5m)	
APS-1000	●			1•2
APS-100	●			1•3
<i>Ultra•Post</i> ®	●			1•4
Digital Door-Max®	⊖			1•5
Digital Pro-Max II		●		1•7
Digital Euro Pro-Max®				1•10
EuroMax				1•11
AMS-3000 2m Loop	○			1•12
AMS-3003 <i>Ultra-Loop</i> ™		○		1•13
<i>Ultra•Exit</i> Concealed 5m			○	1•15
Digital Floor-Max® II		○		1•21

○ Concealed ⊖ Discrete ● Pedestal A Acrylic

* Denotes dual pedestal configuration; wider coverage can be obtained with multiple pedestal configurations

Sensormatic European Detection Systems

Product Name	Aisle Widths		Exit Widths*			Page Number
	0-80cm	80-90cm	0-1.2m	1.2-1.9m	2-2.5m	
APS-1000				●		1•2
APS-100			●			1•3
Ultra•Post®				●		1•4
Digital Door-Max®				⊖		1•5
Pro-Max					●	1•6
MegaMax						1•9
EuroMax						1•11
AMS-3000 Loop				○		1•12
Ultra•Concealed Exit 2.5					○	1•13
AMS-1070		⊖				1•16
Ultra•Lane	●					1•17
Floor-Max® II				○		1•20

○ Concealed ⊖ Discrete ● Pedestal A Acrylic

* Denotes dual pedestal configuration; wider coverage can be obtained with multiple pedestal configurations

Labels

Sensormatic® labels work as an integral part of the total EAS system. When detected from an antenna within the surveillance area, usually at a checkout lane or a store exit, the label causes the antenna to alarm.

Upon entering the surveillance area, the label creates an audible signal, which is detected by the antenna. By design the signal created by the label and detected by the antenna is distinctive and not likely to be caused by other electronic devices nearby. The disturbance within the detection field caused by a label then creates an alarm condition that may indicate someone is shoplifting or removing a protected item from an area.

Using patented *Ultra•Max* acousto-magnetic technology, our *Ultra•Strip®* labels provide the highest detection and deactivation performance today, and they can be deactivated and reactivated repeatedly. This allows labels on returned merchandise to be placed on the sales floor without having to be re-tagged. Available in sheet, roll or individual labels, they can be applied manually, by tabletop application, or by automated application. Labels in roll format are often best suited for source tagging because they can easily be applied using automated label applicators.

Product Name	Most Suited Application	Roll	Sheet	Source Tagging	Page Number
Ultra•Strip III	General Retail Environment	X	X	X	6•2
Ultra•Strip III Microwaveable	Meat and Food Products	X			6•3
Ultra•Strip II	Standard Detection	X	X	X	6•3
Ultra•Strip III Low Profile	CDs and DVDs	X		X	6•4
Ultra•Strip III Capsule	Vitamins or Direct Food Contact	X		X	6•4
Ultra•Strip III Insertable	Placed into Shrink Wrap Packages				6•5
Ultra•Strip III Book Label	Books		X		6•6
Ultra•Strip III Hang Tag	Jewelry			X	6•6
Ultra•Strip III Individual	Manual Source Tagging		X	X	6•7
Ultra•Strip II Reduced Cavity Height	European Wine and Spirits	X			6•7

Hard Tags and Benefit Denial Tags

Incorporating *Ultra•Max* technology, *Sensormatic* hard tags feature the highest detection rate in the industry, along with superior defeat resistance. *Sensormatic* hard tags are fully compatible with all *Ultra•Max* systems, assuring reliable performance while simplifying use and offering the flexibility for a wide range of applications.

Sensormatic Hard Tags feature a range of *Ultra•Max* detection and patented clamp mechanism technologies to best fit a retailer's needs. A CEA (ferrite) based tag features a piece of magnetic material which is designed to resonate when placed in an EAS detection zone. A bias resonator based hard tag provides an increased detection zone by containing a thin specially formulated magnet that has a very finite magnetic strength to produce a specific signal when placed in the detection zone of an EAS system.

Sensormatic benefit denial products provide retailers with a low-cost solution to shoplifting. The products are designed to remove the shoplifting motive by rendering stolen merchandise useless or unsellable. Ink tags and locking benefit denial products are hard to defeat, cost-effective, easy-to-use, and are a highly visible deterrent.

Sensormatic benefit denial solutions are designed to work together with hard tags or as stand-alones. Whether these products are used separately or together, retailers can benefit from efficient, cost-effective theft-deterrent solutions that can quickly and easily minimize merchandise losses.

A variety of manual and powered detachers are available to remove *Sensormatic* hard tags and benefit denial products efficiently. The detachers occupy minimal space at the checkout area and can be mounted in a variety of ways to suit most needs. There are three families of detachers, one for each clamping mechanism: AMD-1000 (AS) detachers for Magnetic Clutch tags, MK751 hand-held and MK91 powered Gator (GA) detachers for Spring Clamp tags, and AMD-3040 hand-held and AMD-3050 powered Super Tag (ST) detachers for Rotary Clamp Tags.

Attachment Clamp Security					
Product Name	Good (Magnetic Clutch)	Better (Spring Clamp)	Best (Rotary Clamp)	Detacher	Page Number
Ultra•Ink	⊖❖			AS	4•2
SuperTag II			⊖	ST	4•2
SuperTag Plus			⊖	ST	4•2
SuperTag Combo			⊖+Microwave	ST	4•3
SuperTag Mini			○	ST	4•3
Ultra*Gator®		⊖		GA	4•3
AMT-1000	○			AS	4•4
UltraLite	○			AS	4•4
Ultra•Lock®	*			AS	4•5
InkMate®		❖	❖	ST or GA	8•2
SensorInk®		❖	❖	ST or GA	8•3
MicroLock®	*			AS	8•4

○ CEA ⊖ Bias/Resonator ❖ Ink * Deterrent

ST - AMD-3040 hand-held and AMD-3050 Powered

GA - MK751 hand-held and MK91 powered

AS - AMD-1000 magnetic

Deactivation

The pivotal step in the EAS process is label deactivation. Sensormatic label deactivators disable *Ultra•Max* EAS labels at the point-of-sale. They are designed to keep busy checkout lines moving with high throughput performance and excellent deactivation height. Sensormatic deactivators are engineered to avoid failures to deactivate, a common problem with other EAS technologies. Free standing deactivators are designed to fit all types of checkout counters and feature audible and visual indicators to help ensure ease-of-use. Integrated deactivators are located inside barcode scanners, making label deactivation as seamless as ringing up a sale.

Free Standing Deactivators				
Product Name	0 to 5" (0-12.7 cm)	Deactivation Height Up to 6" (15.2 cm)	Up to 7" (17.8 cm)	Page Number
PowerPad®		H		7•4
SlimPad®	H			7•5
Compact Pad®	H			7•7
Lowprofile Pad			H	7•8
Value Deactivator	L			7•14
Freestyle®	L			7•15
Contact Pad	L-DC			7•15
Stamp	L-DC			7•16
Multimedia	L			7•17
Integrated Deactivators				
IP Pro		H		7•6
HS Pro	H			7•9
IS Pro ³	H			7•10
NS Pro ¹	H			7•11
NS2 Pro ²	H			7•12

DC - Direct Contact with Label Required

L - A low throughput deactivator is best suited for specialty retailers who customers purchase a small number of items at a time.

H - A high through deactivator is best suited for Supermarkets, hypermarkets and retailers who have the need to deactivate labels at speeds up to one per second.

1 - Integrated into a NCR RealScan 7875z bar code Scanner Assembly.

2 - Integrated into a NCR RealScan 7876z Bi-optic Scanner/Scale

3 - Integrated into a PSC bi-planar Magellan 9500 Bar Code Scanner

EAS

Table of Contents

- Section 1: Detection Systems
- Section 2: Auxiliary Antennas
- Section 3: Accessories
- Section 4: Hard Tags
- Section 5: Detachers
- Section 6: Labels
- Section 7: Deactivators
- Section 8: Benefit Denial

Detection Systems

Ultra•Max is Sensormatic's premier anti-shoplifting Acousto-Magnetic technology and the popular choice of many Discount, Variety, Home Center, Hardware, Entertainment, Soft Goods, Specialty Retailers, and grocery retailers. The benefits of Ultra•Max detector systems include:

- False alarm immunity
- High detection rate
- Wide exit coverage
- Choice of pedestal or concealed systems
- Attractive designs
- Detects smallest EAS label footprint in the industry

IMPORTANT NOTE: Information subject to change without notice. Not all products in the catalog are available worldwide. Consult your local price book for availability.

APS-1000 System



DESCRIPTION

The APS-1000 System is a dual pedestal detection system capable of covering store exits up to 1.5 meters (5') wide. The system offers smaller retailers with double-door exits an affordable Ultra•Max Acousto-Magnetic solution to shoplifting.

The APS-1000 System is comprised of two transceiver pedestals, internal electronics, visual and audible alarms, cabling, and a power cord. The primary pedestal contains the power electronics, alarm light, and audible alarm and provides power to the secondary pedestal. The secondary pedestal contains an alarm lens for aesthetic purposes, but does not alarm either visually or audibly.

COVERAGE

	U.S.	Europe
	Max. pedestal spacing	Max. pedestal spacing
Dual	1.5 m (5')	1.5 m (5')

FEATURES/BENEFITS

- Automatic adjustment to the environment
- Plug-n-play installation
- Built-in audio and visual alarms
- Tags-to-close notification
- Compatible with ScanMax Pro proximity deactivators

SPECIFICATIONS

Electrical

- Primary input: 110-120Vac / 220-240Vac, 1A @ 50-60Hz, auto selectable.

Transmitter

- Outputs: 2 Ports for 2 antennas
- Operating Frequency: 58 kHz
- Transmit burst duration: 1.6ms
- Transmit current: 10A peak
- Burst repetition rate (50Hz): 37.5Hz (normal), 75Hz (validation)
- Burst repetition rate (60Hz): 45Hz (normal), 90Hz (validation)
- Transmit coil resistance: 3.3 ohms
- Alarm lamp duration: 4 sec.
- Alarm audio duration: 2 sec.
- Audio decibel level: 80dB @ 1 meter

Receiver

- Inputs: 1 port for 1 antenna
- Center frequency: 58kHz
- Pedestal coil resistance: 3.16 ohms
- Ranger coil resistance, inner: 0.1369 ohms, outer: 0.9000 ohms

Environmental

- Operating temperature: 0° C to 50° C (32° F to 122° F)
- Relative Humidity: 0 to 90% Non-Condensing

Regulatory

- Emissions: 47 CFR, Part 15, EN300330, EN300683, RSS210
- Safety: UL 60950, CSA C22.2 No. 60950, EN60950

Mechanical

- Pedestal (HxWxD): 135 x 35 x 12.3 cm (53 x 13.8 x 4.75 in.)
- Weight (Tx Ped): 11.18 kg (24.65 lbs)
- Weight (Rx Ped): 9.1 kg (20 lbs.)
- Ranger Receiver (HxWxD) 24.1 x 3.5 x 8.6 cm (9.5 x 1.38 x 3.38 in.)
- Ranger Weight: 0.5kg (1 lb)

Product Code Series*

- ZSMAX3P Transmitter pedestal only
- ZSMAX3S Receiver pedestal only

*Available worldwide

APS-100 System



DESCRIPTION

The APS-100 system is an EAS detection system designed specifically for smaller retailers with single door exits. The system consists of a transmitting pedestal antenna and a receiving device. The transmitting pedestal contains the power/controller device, an audible alarm, and a visual alarm. The receiving device can be either a secondary pedestal or Ranger receivers.

The APS-100 features plug-n-play installation, automatic adjustment to other Ultra•Max systems in the area, and a warning light when tagged merchandise is positioned too close to the system.

COVERAGE

	U.S.	Europe
	Max. pedestal spacing	Max. pedestal spacing
Single with Rangers	0.9 m (3')	0.9 m (3')
Dual	1.2 m (4')	1.2 m (4')

FEATURES/BENEFITS

- Automatic adjustment to the environment
- Plug-n-play installation
- Built-in audio and visual alarms

SPECIFICATIONS

Electrical

- Primary input: 110-120Vac or 220-240Vac, 1A @ 50-60Hz
- Primary power fuse: 1 A, 250V, slo-blow
- Current draw: 0.7Arms max.
- Input power: less than 7W

Transmitter

- Outputs: 1 Port for 1 antenna
- Operating Frequency: 58
- Transmit burst duration: 1.6ms
- Transmit current: 12A peak
- Burst repetition rate (50Hz): 37.5Hz (normal), 75Hz (validation)
- Burst repetition rate (60Hz): 45Hz (normal), 90Hz (validation)
- Transmit coil resistance: 1.9 ohms
- Alarm lamp duration: 4 sec.
- Alarm audio duration: 2 sec.
- Audio decibel level: 80dB @ 1 meter

Receiver

- Inputs: 1 port for 1 antenna
- Center frequency: 58kHz
- Pedestal coil resistance: 3.16 ohms
- Ranger coil resistance, inner: 0.1369 ohms, outer: 0.9000 ohms

Environmental

- Operating temperature: 0° C to 50° C (32° F to 122° F)
- Relative Humidity: 0 to 90% Non-Condensing

Regulatory

- Emissions: 47 CFR, Part 15, EN300330, EN300683, RSS210
- Safety: UL 60950, CSA C22.2 No. 60950, EN60950

Mechanical

- Pedestal (HxWxD): 135 x 35 x 12.3 cm (53 x 13.8 x 4.75 in.)
- Weight (Tx Ped): 10.9kg (24 lbs)
- Weight (Rx Ped): 9.1 kg (20 lbs.)
- Ranger Receiver (HxWxD) 24.1 x 3.5 x 8.6 cm (9.5 x 1.38 x 3.38 in.)
- Ranger Weight: 0.5kg (1 lb)

Product Code Series*

- AMAX2-3: Pedestal with Rangers
- ZAMAX2-4: Dual pedestals
- ZSMAX2P: Transmitter pedestal only
- ZSMAX2S: Receiving pedestal only

*Available worldwide

Ultra*Post®



DESCRIPTION

The Ultra*Post detection system is made up of a Primary pedestal and, typically, a Secondary pedestal. The Primary pedestal contains all the components necessary to operate on its own - transmitter, receiver, audible alarm, visual alarm and power supply. By itself, the Primary pedestal creates a detection field of 0.9m (3 ft.) on both sides. The Secondary pedestal operates in conjunction with a Primary pedestal. It does not contain power, audible alarms or visual alarms. The Primary/Secondary (dual) configuration provides up to 1.8 m (6 ft.) of coverage between pedestals.

OPTIONS

- Alarm counter
- Ultra*Post Shield to minimize backfield.
- A crash kit to safeguard pedestals from shopping cart collisions

COVERAGE

	U.S.		Europe	
	Max. ped. spacing	Total exit coverage	Max. ped. spacing	Total exit coverage
Single pedestal	0.9 m (3')	1.8 m (6')	0.7 m (2.3')	1.6 m (5.3')
Single with Rangers	1.1 m (3.5')	2 m (6.5')	1 m (3.2')	1.7 m (5.6')
Dual pedestals	1.8 m (6')	3.6 m (12')	1.6 m (5.3')	3 m (9.9')

FEATURES/BENEFITS

- Low profile, attractive design.
- Self contained pedestal with integrated power supply for easy installation and lower cost.
- One- or two-pedestal configurations.

SPECIFICATIONS

Receiver

- Inputs: 1 Port (two coils, multiplexed)
- Center Frequency: 58 or 60 kHz

Transmitter

- Outputs: 1 Port (two coils, multiplexed)
- Operating Frequency: 58 or 60 kHz

Alarm

- Alarm Relay output: DPDT contacts
- Contact Switching Current: 1.0A max.
- Contact Switching Voltage: 28V max.
- Lamp/Audio Duration: 1-30 sec., (1 sec. increments)

Environmental

- Ambient Temperature: 0° C to 50° C (32° F to 122° F)
- Relative Humidity: 0 to 90% Non-Condensing

Regulatory

- Emissions: FCC Part 15
- Safety: UL 1950 Can/CSA C22.2 No. 950-95
- FTZ: 17TR2100
- ETSI: IETS 300330
- ITETS: ETS300683

Electrical Specifications - Power supply

- Integrated Power Supply with no External Electronics. Primary Input: 100-120 Vac @50-60 Hz
- 200-240 Vac @ 50-60 Hz
- Primary Power Fuse: 3A, 250 V slow-blow
- Current Draw: 2.0 A peak
- Input Power: 180W

Mechanical

- (HxWxD): 145 x 41 x 9 cm (57 x 16.1 x 3.5 in.)
- Weight: Primary 12.6 kg (27.5 lbs.)
- Secondary: 10.6 kg (23.0 lbs.)

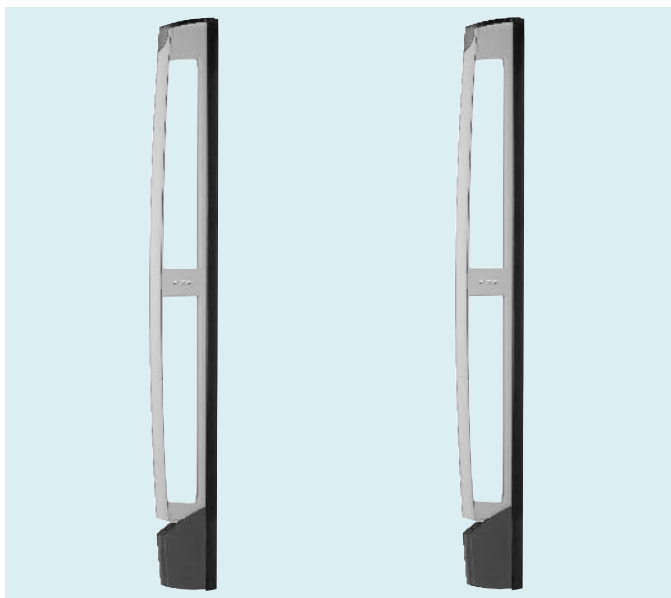
Product Code Series (U.S.)

- ZAUPMH2: Ultra*Post Primary
- ZAUPSH2: Ultra*Post Secondary
- ZAUP9030-3F: Ultra*Post Secondary – 3ft System
- ZAUP9030-6F: Ultra*Post Secondary – 6ft System
- ZPCOUNT: Alarm Counter

Product Code Series (Europe)

- ZAUPML: Ultra*Post Primary
- ZAUPDUAL: Ultra*Post Primary and Secondary
- ZPCOUNT: Alarm Counter

Digital Door-Max®



DESCRIPTION

The Digital Door-Max system features remarkably slender door-mount antenna and Digital Signal Processing capabilities that ensure superb Ultra•Max detection performance. The Door-Max antennas mount to door frames, walls, glass, and other surfaces at the store's entrance/exit. The elongate shape and mounting location blends the antenna into the décor for an Open Architecture appearance and a discreet approach to detection.

Digital Door-Max can cover exits up to 1.9 m (6.2 ft.) wide using the following configurations: single antenna system; dual antenna system; single antenna with Ranger receivers; single antenna with Satellite Receiver.

COVERAGE

	U.S.		Europe	
	Max. ped. spacing	Total exit coverage	Max. ped. spacing	Total exit coverage
Single	0.9 m (3')	1.8 m (6')	0.7 m (2.25')	1.4 m (4.5')X
Single with Rangers	1.2 m (4')	2.1 m (7')	1 m (3.3')	1.7 m (5.6')
Single with Satellite Rvr	1.5 m (5')	2.4 m (8')	1.2 m (4')	1.9 m (6.3')
Dual	1.9 m (6.2')	8 m (12.4')	1.6 m (5.25')	3 m (9.85')

FEATURES/BENEFITS

- Narrow, designer look appeals to upscale retailers.
- Compatible with all Ultra•Max labels and hard tags.
- Built-in audio/visual alarm and alarm counter.

SPECIFICATIONS

Receiver

- Inputs: 2 ports
- Center Frequency: 58kHz

Transmitter

- Outputs: 2 ports
- Operating Frequency: 58kHz
- Transmit Burst Duration: 1.6ms
- Transmit Current: 16A peak
- Burst Rate on 50Hz ac: 75Hz or 37.5Hz
- Burst Rate on 60Hz ac: 90 Hz or 45Hz

Alarm

- Alarm Relay Output: DPDT contacts
- Contact Switching Current: 1.0A max.
- Contact Switching Voltage: 28V max.
- Lamp/Audio Duration: 1-10 sec. (1 sec. Increments)
- Audible Alarm: Drives 01EC76A and 01MC76A000 remote alarm

Environmental

- Ambient Temperature: 0 to 50° C (32° F-122° F)
- Relative Humidity: 0 to 90% non-condensing

Regulatory

- Safety: UL1950, Can/CSA C22.2, No. 950
- EMC: 47 CFR, Part 15

Electrical Specifications - Power supply

- Primary Input: 100-120Vac or 220-240Vac @ 50-60 Hz
- Primary Power Fuse: 5A, 250V, slo-blow, hi breaking
- Current Draw: 3.5Arms
- Input Power: >350W

Mechanical Antenna

- (HxWxD) 183.9 x 24 x 4.4 cm (72.4 x 9.4 x 1.7 in.)
- Weight: 11.6 kg (25.5 lbs.)
- Digital 216 Controller
- (HxWxD) 15 x 50.7 x 37.7 cm (5.9 x 20 x 14.8 in.)
- Weight: 8.6 kg (19 lbs.)

Product Codes (U.S.)*

- ZSDM4 DoorMax Antenna
- ZADM4-1 DIGITAL DOOR-MAX SINGLE ANT SYSTEM
- ZADM4-2 DIGITAL DOOR-MAX DUAL ANT SYSTEM
- ZADM4-3 DIGITAL DOOR-MAX SPLIT ANT SYSTEM
- ZADM4-4 DIGITAL DOOR-MAX QUAD ANT SYSTEM

* Not available in Europe

Product Codes (Europe)

- ZADM9030-1 DoorMax Single
- ZADM9030-2 DoorMax Dual
- ZADM9030-1F1 DoorMax Single with Ranger
- ZADM9030-1S1 DoorMax Single with Satellite Receiver
- ZADM4-3 Split Digital DoorMax Antenna System
- ZADM4-4 Quad Digital DoorMax Antenna System

Pro-Max®



DESCRIPTION

Pro-Max is an Ultra•Max anti-shoplifting detection system to provide wide exit coverage for stores in Europe. The pedestals provide both audible and visual alarms. The light gray pedestals can be installed either indoors or outdoors.

Satellite Receiver or Ranger receivers—used in place of a pedestal—provides a system design option or can help achieve an open architectural appearance.

The pedestal's structural foam construction eliminates the need for a separate impact cover.

COVERAGE

	U.S.		Europe	
	Max. ped. spacing	Total exit coverage	Max. ped. spacing	Total exit coverage
Single	X	X	1.2 m (4')	2.4 m (7.9')
Dual	X	X	2.4 m (7.8')	4.8 m (15.7')
Single with Ranger	X	X	1.5 m (4.9')	2.7 m (8.9')
Single with Satellite Rvr	X	X	1.8 m (6')	3 m (9.8')

FEATURES/BENEFITS

- High detection rate.
- Wide exit coverage.
- Built-in audio/visual alarm and alarm counter.

SPECIFICATIONS

Receiver

- Inputs: 2 ports
- Center Frequency: 58kHz

Transmitter

- Outputs: 2 ports
- Operating Frequency: 58kHz
- Transmit Burst Duration: 1.6ms
- Transmit Current: 8A peak
- Burst Rate on 50Hz ac: 37.5Hz
- Burst Rate on 60Hz ac: 45Hz

Alarm

- Alarm Relay Output: DPDT contacts
- Contact Switching Current: 1.0A max.
- Contact Switching Voltage: 28V max.
- Lamp/Audio Duration: 1-30 sec. (1 sec. Increments)

Environmental

- Ambient Temperature: 0 to 50° C (32° F-122° F)
- Relative Humidity: 0 to 90% non-condensing

Regulatory

- Safety: UL1950, Can/CSA C22.2, No. 950
- EMC: 47 CFR, Part 15

Electrical Specifications - Power supply

- Primary Input: 100-120Vac or 220-240Vac @ 50-60 Hz
- Primary Power Fuse: 5A, 250V, slo-blow, hi breaking
- Current Draw: 3.5Arms
- Input Power: >350W

Mechanical

- (HxWxD) 159 x 72 x 10 cm (62.5 x 28.5 x 4 in.)
- Weight: 20.4kg (45 lbs.)

Product Codes (Europe)*

- ZAPM9030-1 ProMax Single
- ZAPM9030-1F1 ProMax Single with Ranger
- ZAPM9030-1S1 ProMax Single with Single Satellite
- ZAPM9030-1F2 ProMax Single with Dual Ranger
- ZAPM9030-1S2 ProMax Single with Dual Satellite
- ZAPM9030-2 ProMax Dual
- ZAPM9030-3R ProMax Split Tx rx Tx
- ZAPM9030-3 ProMax Split
- ZAPM9030-4 ProMax Quad

Product Codes with Ultra•Controller-4 Channel

ZSPM4 Antenna Only
 ZAPM4-FC w/face cntr (Antenna Only)
 ZAPM4-3 Split Digital Pro-Max System
 ZAPM4-4 Quad Digital Pro-Max System
 ZAPM4-FC3 Split Digital Pro-Max 2 w/face cntr
 ZAPM4-FC4 Quad Digital Pro-Max 2 w/face cntr

* See Digital Pro-MaxII for U.S. use

Digital Pro-Max® II



DESCRIPTION

The Digital Pro-Max® II system is a wide exit anti-shoplifting detection systems designed for retailers of all types, such as DIY, mass retailers, malls stores, and others. The system features Digital Signal Processing, integrated audible and visual alarms, high detection performance, and wide exit coverage. The system is suitable for indoor and outdoor installations.

The Digital Pro-Max II system offers integrated alarm messaging and the option of adding a new resettable digital alarm counter in the base of the pedestal. The alarm message is broadcast from a pedestal speaker, which is located in the middle of the pedestal. The alarm counter, also available as an option, is now resettable and has been upgraded from a mechanical device to a digital counter. The counter installs in the base of the pedestal.

COVERAGE

	U.S.		Europe	
	Max. ped. Spacing	Total exit coverage	Max. ped. Spacing	Total exit coverage
Single	1.4 m (4.5')	2.7 m (9')	X	X
Dual	2.7 m (9')	5.5 m (18')	X	X
Single w/ Ranger	1.8 m (6')	3.2 m (10.5')	X	X
Dual w/ Ranger	2.1 m (7')	3.5 m (11.5')	X	X

SPECIFICATIONS

Receiver

- Inputs: 2 ports
- Center Frequency: 58kHz

Transmitter

- Outputs: 2 ports
- Operating Frequency: 58kHz
- Transmit Burst Duration: 1.6ms
- Transmit Current: 16A peak
- Burst Rate on 50Hz ac: 75Hz or 37.5Hz
- Burst Rate on 60Hz ac: 90 Hz or 45Hz

Alarm

- Alarm Relay Output: DPDT contacts
- Contact Switching Current: 1.0A max.
- Contact Switching Voltage: 28V max.
- Lamp/Audio Duration: 1-30 sec. (1 sec. Increments)
- Audible Alarm: Drives 01EC76A and 01MC76A000 alarm

Environmental

- Ambient Temperature: 0 to 50° C (32° F-122° F)
- Relative Humidity: 0 to 90% non-condensing

Regulatory

- Safety: UL1950, Can/CSA C22.2, No. 950
- EMC: 47 CFR, Part 15

Electrical Specifications - Power supply

- Primary Input: 100-120Vac or 220-240Vac @ 50-60
- Primary Power Fuse: 5A, 250V, slo-blow, hi breaking
- Current Draw: 3.5Arms
- Input Power: >350W

Mechanical

- (HxWxD) 159 x 72 x 10 cm (62.5 x 28.5 x 4 in.)
- Weight: 20.4kg (45 lbs.)

Product Codes (U.S.) *

- ZSPM4 Pro-Max Antenna
- ZSPM4-FC Pro-Max Antenna w/ Face
- ZSPM4-OD Pro-Max Outdoor Antenna
- ZAPM4-1 Digital Pro-Max Single Antenna System
- ZAPM4-2 Digital Pro-Max Dual System
- ZAPM4-2SR2 PM4 Dual Antenna with Dual Satellite Receiver
- ZAPM4-3 Digital Pro-Max Split
- ZAPM4-4 Digital Pro-Max Quad System
- ZAPM4-FC1 Single Digital Pro-Max 2 System w/face cntr
- ZAPM4-FC2 Dual Digital Pro-Max 2 System w/face cntr
- ZAPM4-FC3 Split Digital Pro-Max 2 w/face cntr
- ZAPM4-FC4 Quad Digital Pro-Max 2 w/face cntr
- ZAPM4-OD1 Digital Pro-Max Single Outdoor
- ZAPM4-OD2 Digital Pro-Max Dual Outdoor
- ZAPM4-OD3 Digital Pro-Max Split Outdoor
- ZAPM4-OD4 Digital Pro-Max Quad Outdoor

Product Codes (U.S.) *(With Digital 216 Controller)

- ZADPM2-1 Digital Pro-Max II single antenna system
- ZADPM2-2 Digital Pro-Max II dual antenna system
- ZADPM2-3RX Digital Pro-Max II split TX/RX system

- ZADPM2-3 Digital Pro-Max II split antenna system
- ZADPM2-4RX Digital Pro-Max II quad TX/RX system
- ZADPM2-4 Digital Pro-Max II quad system
- ZSDPM2 Digital Pro-Max II indoor pedestal only
- ZAODPM2-1 Digital Pro-Max II single outdoor antenna system

Alarm Message Options

- ZPMESSAGE-1 Double chime
- ZPMESSAGE-2 Standard message, **English**, female.
- ZPMESSAGE-3 Standard message, **English**, male.
- ZPMESSAGE-4 Message, **English**, female
- ZPMESSAGE-5 Message, **English**, female
- ZPMESSAGE-6 Triple bell

**See Pro-Max Plus for European use*

MegaMax



DESCRIPTION

MegaMax systems are designed for European retailers. The pedestals have the same clear, acrylic finish as the Euro Pro-Max pedestals. The system provides 2 m (6.56 ft.) of coverage between pedestals, with an additional 1m (2.5 ft) or backfield behind each pedestal.

Ranger receivers or Satellite Receiver—used in place of a pedestal—provide system design options or help achieve an open architectural appearance.

COVERAGE

	U.S.		Europe	
	Max. ped. spacing	Total exit coverage	Max. ped. spacing	Total exit coverage
Single	X	X	1 m (3.2')	2 m (6.4')
Dual	X	X	2 m (6.5')	4 m (13.1')

FEATURES/BENEFITS

- Upscale, attractive.
- High detection rate.

SPECIFICATIONS

Power Supply

- Primary Inputs: 100-120Vac or 220-240Vac @ 50-60Hz
- Primary Power Fuse: 3A, 250V slo-blow
- Current Draw: 2.0A peak
- Input Power: <180W

Transmitter

- Outputs: 2 ports (two antennas multiplexed)
- Operating Frequency: 58 or 60kHz
- Transmit Burst Duration: 1.6ms
- Transmit Current: 16A peak
- Repetition Rate: 75Hz (based on 50 Hz ac); 90 Hz (based on 60 Hz ac)
- Tx Coil Resis: 4.4 ohms (±5%)

Alarm

- Alarm Relay Output: SPDT contacts
- Contact Switching Current: 0.25A max.
- Contact Switching Voltage: 28V max.
- Lamp/Audio Duration: 1-30 sec. (1 sec. Increments)

Environmental

- Ambient Temperature: 0 to 50° C (32° F-122° F)
- Relative Humidity: 0 to 90% non-condensing

Regulatory

- Emissions: FCC Part 15
- Safety: UL 1950; EN 60950 (CE); Can/CSA C22.2 No. 950-95

Electrical Specifications - Power supply

- Primary input: 100-240Vac, 50-60Hz
- Line Fuses: 5A, 250V, T127
- Current Draw: 4.5A peak
- Input Power: 400W

Mechanical

- (LxWxD) 149 x 71.4 x 14 cm (58.5 x 28 x 5.5 in.)
- Weight: 22.2 kg (48.8 lb)

Product Codes (Europe)*

- ZAEP9030-1 MegaMax Single
- ZAEP9030-1F1 MegaMax Single with Ranger
- ZAEP9030-1S1 MegaMax Single with Satellite receiver
- ZAEP9030-1F2 MegaMax Single with Dual Ranger
- ZAEP9030-1S2 MegaMax Single with Dual Satellite receiver
- ZAEP9030-2 MegaMax Dual
- ZAEP9030-3 MegaMax Split
- ZAEP9030-4 MegaMax Quad

Product Codes With Ultra-Controller-4 Channel (Europe)

- ZSEP4 Single Antenna
- ZAEP4-3 Split System
- ZAEP4-4 Quad System

*See Euro Pro-Max III for U.S. use

AMS-1030 Digital Euro Pro-Max®



DESCRIPTION

The upscale, contemporary styling of the Digital Euro Pro-Max® pedestal is designed to appeal to fashion retailers and others with high aesthetic requirements. The system is able to cover exits up to 5.4 m (18') wide using just two pedestal antennas.

The Digital Euro Pro-Max operates with the Ultra•Controller 4 Channel, primarily for non-European use. The digital technology enables Controller assisted auto tuning, a transmitter inhibit switch and status LED, auto pedestal type, and recognition. Systems can be cost-effectively designed for a variety of exit widths using single, dual, split, or multiple pedestal configurations. Typical configurations using one Controller include:

- Single transceiver system
- Dual transceiver system
- Split transmitter/receiver system
- Quad transmitter/receiver system

COVERAGE

	U.S.		Europe	
	Max. ped. Spacing	Total exit coverage	Max. ped. Spacing	Total exit coverage
Single	1.4 m (4.5')	2.7 m (9')	X	X
Dual	2.7 m (9')	5.4 m (18')	X	X
Split	2.7 m (9')	8.2 m (27')	X	X
Quad	2.7 m (9')	10.7 m (35')	X	X

FEATURES/BENEFITS

- High Aesthetic Style Pedestal
- Digital Class Detection
- Controller-Assisted Auto Tuning
- Tx Inhibit Switch/Status LED
- Auto Pedestal Type Recognition

SPECIFICATIONS

Power Supply (non-European)

- Primary Input: 100-120Vac or 220-240Vac @ 50-60Hz
- Primary Power Fuse: 5A, 250V
- Current Draw: 3.5A
- Input Power: <350W

Transmitter

- Outputs: 2 ports
- Operating Frequency: 58 kHz (200Hz)
- Transmit Burst Duration: 1.6ms
- Transmit Current: 16A peak
- Burst Rep. Rate: 75 Hz or 37.5Hz (normal) based on 50Hz ac; 90 Hz or 45Hz (normal) based on 60Hz ac

Receiver

- Inputs: 4 ports
- Center Frequency: 58 kHz

Alarm

- Alarm Relay Output: DPDT contacts
- Lamp/Audio Duration: 1-10 sec. (1 sec. increments)

Environmental

- Ambient Temperature: C to 5 C (3 F to 12 F)
- Relative Humidity: 0-90% non-condensing

Regulatory

- Safety: UL60950, CSA C22.2, No. 60950, EN 60 950 EMC: 47 CRF, Part 15, RSS 210

Product Codes (U.S.) *

- ZSEP4 Euro Pro-Max Antenna
- ZAEP4-1 Digital Euro Pro Single Antenna System
- ZAEP4-2 Digital Euro Pro Dual Antenna System
- ZAEP4-3 Digital Euro Pro Max Split System
- ZAEP4-4 Digital Euro Pro Max Quad
- ZAEP4-2SR2 Digital Euro-Pro Dual System with Dual Satellite Receiver
- ZAEP4-2FM1 Digital EuroPro Dual System Combo with FloorMax

Product Codes (US) *(With Digital 216 Controller)

- ZADEPM-1 Single AMS-1030 Pedestal System
- ZADEPM-2 Dual AMS-1030 Pedestal System
- ZADEPM-3RX Split Tx/Rx AMS-1030 Pedestal System
- ZADEPM-3 Split AMS-1030 Pedestal System
- ZADEPM-4RX Quad Tx/Rx AMS-1030 Pedestal System
- ZADEPM-4 Quad AMS-1030 Pedestal System

EuroMax



DESCRIPTION

EuroMax is a highly attractive EAS detector fashioned from a clear, acrylic panel and complemented by a gray, speckle-tone base. It provides a sleek, contemporary "designer look" that appeals to high-end fashion boutiques and other stores where aesthetics are of paramount importance. In addition, the pedestals are see-through, which reduces the appearance of a pedestal "obstruction" at busy exits.

EuroMax can be installed as a single pedestal system for narrow exits or multiple pedestal system for wide exits. Ranger receivers or Satellite Receiver—used in place of a pedestal—provide system design options or help achieve an open architectural appearance.

COVERAGE

	U.S.		Europe	
	Max. ped. spacing	Total exit coverage	Max. ped. spacing	Total exit coverage
Single	0.9 m (3')	1.8 m (6')	0.8 m (2.6')	1.6 m (2.6')
Dual	1.8 m (6')	3.6 m (12')	1.6 m (5.2')	3.2 m (10.4')
Single with Ranger	1.1 m (3.5')	2 m (6.5')	1 m (3.2')	1.8 m (5.7')

FEATURES/BENEFITS

- Clear, designer look appeals to upscale retailers.
- Compatible with all Ultra•Max labels and hard tags.

SPECIFICATIONS

Power Supply

- Primary input: 100-120Vac or 220-240Vac @50-60Hz
- Primary Power Fuse: 3A, 250V slo-blow (non-European), 2A, 250V (European)
- Current Draw: 2.0A peak (non-European), 1.5A peak (European)
- Input Power: 180W (non-European), 150W (European)

Transmitter

- Outputs: 2 ports (two antennas, multiplexed)
- Operating Frequency: 58 or 60kHz (± 200 Hz)
- Transmit Burst Duration: 1.6ms
- Transmit Current: 16A peak (non-European), 8A peak (European)
- Burst Repetition Rate based on 50Hz ac: 37.5Hz (normal), 75Hz (validation)
- Burst Repetition Rate based on 60Hz: 45Hz (normal), 90Hz (validation)
- Transmit Coil Resistance: 1.6 ohms ($\pm 5\%$)

Receiver

- Inputs: 2 ports (two antennas, multiplexed)
- Center Frequency: 58 or 60kHz
- Receive Coil Resistance: 1.6 ohms ($\pm 5\%$)

Alarm

- Alarm Relay Output: DPDT contacts
- Max. Contact Switching Current/Voltage: 1.0A/28V
- Lamp/Audio Duration: 1-30 sec. (1 sec. increments)

Environmental

- Ambient Temperature: 0° C to 50° C (32° F-122° F)
- Relative Humidity: 0 to 90% non-condensing

Mechanical

- (HxWxD) 159 X 42 X 13 (62.5 X 16.5 X 5 IN.)
- Weight: 21.1kg (46.5 lb.)

Regulatory

- Safety: UL 1950; Can/CSA C22.2 No. 950; EN60950

Antennas in "phase aiding":

- EMC: 47 CFR, Part 15

Antennas in "figure 8":

- EMC: 47 CFR, Part 15; I-ETS 300330 1994; ETS 300683 1997; EN61000-3-2 1995/AZ: 1998; EN 61000-3-3 1995

Product Codes

- ZAEM9030-1 EuroMax Single
- ZAEM9030-1F1 EuroMax single with Ranger
- ZAEM9030-1S1 EuroMax Single with Satellite receiver
- ZAEM9030-1F2 EuroMax Single with Dual Ranger
- ZAEM9030-1S2 EuroMax Single with Dual Satellite receiver
- ZAEM9030-S EuroMax Dual Trx
- ZAEM9030-3 EuroMax Split Trx
- ZAEM9030-4 EuroMax Quad

AMS-3000 Ultra•Loop™ System



DESCRIPTION

The AMS-3000 Ultra•Loop™ 2 Meter System is an Ultra•Max Electronic Article Surveillance (EAS) loop system offering retailers a discreet anti-shoplifting detection solution.

The system is almost completely concealed from view except for small Ranger receivers mounted on both sides of the doorway. The concealed mounting helps preserve the open appearance of the storefront while freeing up valuable space for shoppers, advertising displays, shopping carts, and other merchandising necessities.

The system consists of a controller, transmit and receive antennas, and an alarm or message unit. The transmit antenna is a loop cable that surrounds the doorframe. Ranger receivers are used as receiver antennas

COVERAGE

	U.S.	Europe
Single	2 m (6.5')	1.8 m (6')

FEATURES

- Semi concealed system helps preserve store aesthetics
- Audible and visual alarm unit alerts store personnel
- Employs Ultra•Max Acousto-Magnetic technology for superb detection performance and reliability
- The non-European system can deliver an economical solution

by offering a dual antenna installation using only one Controller. Retailers can now cover two exits without having to purchase an additional controller. An optional second alarm can be added to provide individual zone coverage for each exit. The antennas can be spaced up to a maximum 18.3 m (60') apart.

SPECIFICATIONS

Power Supply

- Primary Input: 100-120Vac or 220-240Vac @ 50-60Hz
- Primary Power Fuse: Non-European 5A, 250V; European 2A, 250V
- Current Draw: Non-European 3.3A @ 120; 2.7A @ 240; European 1.5A @ 120, 1.2A @ 240
- Input Power: Non-European <300W; European <120W

Transmitter

- Outputs: 2 ports
- Operating Frequency: 58 Hz (±200Hz)
- Transmit Burst Duration: 1.6ms
- Transmit Current: Non-European 16A peak; European 8A peak
- Burst Rep. Rate: 37.5Hz (normal) based on 50Hz ac; 45Hz (normal) based on 60Hz ac

Receiver

- Inputs: Non-European 4 ports; European 2 ports (2 antennas multiplexed)
- Center Frequency: 58 Hz

Alarm

- Alarm Relay Output: DPDT contacts
- Lamp/Audio Duration: 1-30 sec. (1 sec. increments)

Environmental

- Ambient Temperature: 0 C to 50 C (32 F to 122 F)
- Relative Humidity: 0-90% non-condensing

Regulatory (non-European)

- Safety: UL1950, Can/CSA C22.2, No. 950
- EMC: 47 CRF, Part 15, RS 210 Issue 3

Regulatory (European)

- Emissions: 47 CRF, Part 15, ETS 300330 ETS 300683, EN61000-3-2, EN61000-3-3
- Safety: UL1950, CSA C22.2, No. 950, EN 60 950

Product Codes (U.S.)*

- ZAL4-2R AMS-3000 - Loop System w/Ranger- non-European
- ZAL4-2RX2 AMS-3000 - Dual Loop System w/Ranger - non-European

Product Codes (U.S.)* (With Digital 216 Controller)

- ZALD-2R Single AMS-3000 Ultra•Loop System* (with Digital 216 Controller)
- ZALD-2RX2 Dual AMS-3000 Ultra•Loop System* (with Digital 216 Controller)

Product Codes (European)

- ZAL9030-2RC AMS-3000 Loop System with Rangers, alarm, clear
- ZAL9030-2RB AMS-3000 Loop System with Rangers, alarm, black

* Not Available in Europe

Ultra•Concealed Exit 2.5 Meter System



DESCRIPTION

The Ultra•Concealed Exit 2.5m System is a concealed Electronic Article Surveillance (EAS) detection system for retailers insisting on a discreet solution to shoplifting. The system's concealed transmitter antenna installs around 2.5 meter (8.2') wide doorways, around the outside of the doorframe. Two small, receiver floor antennas are placed under the doorway.

The Ultra•Concealed Exit 2.5m System can be installed on virtually any doorframe at mall-type exits, parking lot exits, and others. It operates with the ZC30-ADS digital tone alarm.

COVERAGE

	Europe	
	Loop System	Total exit coverage
Single	X	2.5 m (8.2')
Dual	Up to 18.3 m (60')	5 m (16.4')

FEATURES/BENEFITS

- The concealed nature of the system helps preserve the store's décor.
- Protects doorways up to 2.5 m (8.2') wide with excellent detection performance.
- Can deliver a more economical solution by utilizing a dual antenna configuration using only one Ultra•Controller 4

Channel. Retailers can now cover two exits up to 60' apart without having to purchase an additional controller (min. four inches apart). An optional second alarm can be added to provide individual zone coverage for each exit.

SPECIFICATIONS

Dimensions

- AMS-9033 Controller
- LxWxD: 13.0 x 36.8 x 32.8 cm (5.1 x 14.5 x 12.9 in.)
- Weight: 5.84 kg (12.90 lbs.)
- Ultra•Controller 4 Channel
- LxWxD: 50.8 x 43.4 x 15 cm (20 x 14.3 x 5.9 in.)
- Weight 7.3kg (16.1lbs.)
- Remote Message Unit:
- LxWxD: 20.3 x 15 x 6.4 cm (8 x 5.9 x 2.5")

Power Supply

- Primary Input: 100-120Vac or 220-240
- Vac @ 50-60Hz
- Primary Power Fuse: 2.5A, 250V
- Current Draw: 1.2A @ 120; 0.8A @ 240
- Input Power: < 125W

Transmitter

- Outputs: 2 ports
- Operating Frequency: 58 kHz (± 200 Hz)
- Transmit Burst Duration: 1.6ms
- Transmit Current: 8A peak
- Burst Repetition Rate: 37.5Hz (normal)
- based on 50Hz ac; 45Hz (normal)
- based on 60Hz ac

Receiver

- Inputs: 4 ports
- Center Frequency: 58 kHz

Alarm

- Alarm Relay Output: DPDT contacts
- Lamp/Audio Duration: 1-30 sec. (1 sec. increments)

Environmental

- Ambient Temperature: 0°C to 50°C (32° F to 122° F)
- Relative Humidity: 0-90% non-condensing

Regulatory

- Safety: UL1950, Can/CSA C22.2, No. 950 EMC: 47 CRF, Part 15, RS 210 Issue 3

Product Codes

- ZAL9033-3C AMS-3003 Ultra•Loop, 3 Meter System Clear
- ZAL9033-3B AMS-3003 Ultra•Loop 3 Meter System Black

AMS-3003 Ultra•Loop System



DESCRIPTION

The Ultra•Loop 3m System is a concealed Electronic Article Surveillance (EAS) detection system for retailers insisting on a discreet solution to shoplifting. The system's concealed transmitter antenna installs around 3 meter (10') wide doorways, around the outside of the doorframe. Two small, receiver floor antennas are placed under the doorway.

The AMS-3003 Ultra•Loop 3 Meter System can be installed on virtually any doorframe at mall-type exits, parking lot exits, and others. It operates with the ZC30-ADS digital tone alarm.

COVERAGE

	US	
	Loop System	Total exit coverage
Single	X	3 m (10')
Dual	Up to 18.3m (60')	6 m (20')

FEATURES/BENEFITS

- The concealed nature of the system helps preserve the store's décor.
- Protects doorways up to 3 m (10') wide with excellent detection performance.
- Can deliver a more economical solution by utilizing a dual antenna configuration using only one Ultra•Controller 4

Channel. Retailers can now cover two exits up to 60' apart without having to purchase an additional controller (min. four inches apart). An optional second alarm can be added to provide individual zone coverage for each exit.

SPECIFICATIONS

Dimensions

- LxWxD: 13.0 x 36.8 x 32.8 cm (5.1 x 14.5 x 12.9 in.)
- Weight: 5.84 kg (12.90 lbs.)
- Ultra•Controller 4 Channel
- LxWxD: 50.8 x 43.4 x 15 cm (20 x 14.3 x 5.9 in.)
- Weight 7.3kg (16.1lbs.)
- Remote Message Unit:
- LxWxD: 20.3 x 15 x 6.4 cm (8 x 5.9 x 2.5")

Power Supply

- Primary Input: 100-120Vac or 220-240
- Vac @ 50-60Hz
- Primary Power Fuse: 5A, 250V
- Current Draw: 3.3A @ 120; 2.7A @ 240
- Input Power: < 300W

Transmitter

- Outputs: 2 ports
- Operating Frequency: 58 kHz (± 200 Hz)
- Transmit Burst Duration: 1.6ms
- Transmit Current: 16A peak
- Burst Repetition Rate: 37.5Hz (normal)
- based on 50Hz ac; 45Hz (normal)
- based on 60Hz ac

Receiver

- Inputs: 4 ports
- Center Frequency: 58 kHz

Alarm

- Alarm Relay Output: DPDT contacts
- Lamp/Audio Duration: 1-30 sec. (1 sec. increments)

Environmental

- Ambient Temperature: 0°C to 50°C (32° F to 122° F)
- Relative Humidity: 0-90% non-condensing

Regulatory

- Safety: UL1950, Can/CSA C22.2, No. 950 EMC: 47 CRF, Part 15, RS 210 Issue 3

Product Codes

- ZAL4-3 AMS-3003 Ultra•Loop, 3 Meter System
- ZAL4-3X2 AMS-3003 Ultra•Loop Dual 3 Meter System
- ZALD-3 AMS-3003 Ultra•Loop 3 Meter System (with Digital 216)
- ZALD-3x2 AMS-3003 Ultra•Loop 3 Meter System (with Digital 216)

Ultra•Exit Concealed 5 Meter System



DESCRIPTION

The Ultra•Exit Concealed 5 Meter System is an aesthetic anti-shoplifting solution for high fashion and specialty store formats; however any visually conscious retailer with a 3.7m (12') – 5.4m (18') wide storefront can utilize this solution. The Ultra•Exit Concealed 5 Meter System consists of three key antennae elements:

- **Overhead:** These new state of the art transceivers that have an oval shape approximately 1.8m (7') long. Two transceivers will be mounted horizontally overhead from 2.4m (8') – 3m (10') from the floor. The antennas are packaged in a decorative, low profile housing. They can be suspended or surface mounted.
- **Perimeter Antenna** – A loop will surround all four sides of the protected entrance. The standard installation of the loop will be concealed in the columns. It also can be surface mounted (with optional trim kits). A saw cut in the floor is required to be installed.
- **Floor Antenna** – The floor loops will only function as a receiver antenna. These loops will require a saw cut in the floor to be installed.

COVERAGE

	U.S.		Europe	
	Max. ped. Spacing	Total exit coverage	Max. ped. Spacing	Total exit coverage
Single	X	3.7m (12') – 5.4m (18')	X	X
Dual	12m (40')	3.7m (12') – 5.4m (18')	X	X

FEATURES/BENEFITS

- Eliminates the pedestal objections from retailers' key purchase criteria.
- Address the transition needs associated with the discontinuation of microwave systems.
- Traditional pedestal systems cannot be installed in some storefronts and discrete anti-shoplifting detection systems are preferred by a growing number of mall management companies.

SPECIFICATIONS

Power Supply (non-European)

- Primary Input: 100-120Vac or 220-240
- Vac @ 50-60Hz
- Primary Power Fuse: 5A, 250V
- Current Draw: 3.3A @ 120; 2.7A @ 240
- Input Power: <300W

Transmitter

- Outputs: 3 ports
- Operating Frequency: 58 kHz (±200Hz)
- Transmit Burst Duration: 1.6ms
- Transmit Current: 16A peak
- Burst Repetition Rate: 75Hz (normal) based on 50Hz ac; 90Hz (normal) based on 60Hz ac

Receiver

- Inputs: 5 ports
- Center Frequency: 58 kHz

Alarm

- Alarm Relay Output: DPDT contacts
- Lamp/Audio Duration: 1-30 sec.
- (1 sec. increments)

Environmental

- Ambient Temperature: 0°C to 50°C (32° F to 122° F)
- Relative Humidity: 0-90% non-condensing

Regulatory

- Safety: UL1950, Can/CSA C22.2, No. 950 EMC: 47 CRF, Part 15, RS 210 Issue 3

Product Codes (U.S.) *

- ZALD-12 Ultra•Exit Concealed 12 Ft. System
- ZALD-15 Ultra•Exit Concealed 15 Ft. System
- ZALD-18 Ultra•Exit Concealed 18 Ft. System
- ZALD-12A Ultra•Exit 12 Ft. Pre-Wire Kit
- ZALD-15A Ultra•Exit 15 Ft. Pre-Wire Kit
- ZALD-18A Ultra•Exit 18 Ft. Pre-Wire Kit
- ZALD-12B Ultra•Exit 12 Ft. Final Sys Kit
- ZALD-15B Ultra•Exit 15 Ft. Final Sys Kit
- ZALD-18B Ultra•Exit 18 Ft. Final Sys Kit
- ZALD-EXTB Ultra•Exit 12' - 18' EXTRUSION/CABLE KIT BLK
- ZALD-EXTC Ultra•Exit 12' - 18' EXTRUSION/CABLE KIT CLR
- 0352-0212-01 Bracket Mount Option Kit

* Not Available in Europe

Will be available in February 2005

AMS-1070 Detection



DESCRIPTION

The AMS-1070 detection system is an Ultra•Max Acousto-Magnetic system featuring dramatically small antennas for aisles or exits. At 5.7 cm wide and 2.3 cm thick, the antennas are 5-6 times narrower than typical RF detectors and far thinner than any EM system. The antennas are offered in tall (alarming) and short (non-alarming) models. The AMS-1070 can be installed in single aisle or dual aisle configurations with 90 cm of separation between antennas.

COVERAGE

	U.S.	Europe
Transceiver pair	N.A.	90 cm (36")

FEATURES

- Integrated audible/visual alarm (tall antenna only)
- Optional remote alarm module
- Ultra•Max detection performance
- Single aisle or dual aisle coverage
- Dramatically narrow and short antennas
- Network connectivity
- Special port for wireless communications with Personal Digital Assistant (PDA)

SPECIFICATIONS

Transmitter

- Outputs: 2 ports
- Operating Frequency: 58 kHz
- Transmit Burst Duration: 1.6 ms
- Transmit Current: 1 A peak

- Burst Repetition Rate (50 Hz) AC: 37.5 Hz (normal), 150 Hz (zone ID validation)
- Burst Repetition Rate (60 Hz): 45 Hz (normal), 180 Hz (zone ID validation)
- Transmit Coil Resistance: 12-14 Ohms

Receiver

- Inputs: 2 ports
- Center Frequency: 58 kHz
- Receive Coil Resistance: 12-14 Ohms

Alarm

- Relay Output: DPDT contacts
- Lamp/Audio Duration: 1-30 sec. (1 sec. Increments)

Electrical

- Primary Input: 100-120Vac or 220-240Vac @ 50-60 Hz
- Primary Power Fuse: 1 A, 250 V slow blow
- Current Draw: 0.75 A peak
- Input Power: <24 W (<12 W per aisle)

Environmental

- Ambient Temperature: 0 to 40° C (32° F-104° F)
- Relative Humidity: 0 to 90% non-condensing

Regulatory

- Safety: UL 1950; Can/CSA C22.2 No. 950; EN60950
- EMC: 47 CFR Part 15; ETS3003301994; EN 300330 1998 ETS 300683 1997; EN 61000-3-2 1995/A2: 1998; EN 61000-3-3-1995

Mechanical (antennas)

- Tall (HxWxD): 94.5 x 5.7 x 4 cm
- Short (HxWxD): 79.4 x 5.7 x 2.3 cm
- Tall Weight: 0.9 kg
- Short Weight: 0.84

Mechanical (Controller)

- (HxWxD): 9.22 x 21 x 26.15 cm (3.63 x 8.27 x 10.3 in.)
- Weight: 2.58 kg (5.71 lbs.)

Mechanical (remote alarm module)

- (HxWxD): 12.58 x 5.7 2.3 cm
- Weight: 65 kg

Product Codes

- ZSDEXA-75 Tall (alarming) antenna
- ZSDEX-75 Short (Non-alarming) antenna
- ZEDEX-1070 Controller
- ZPDEX-RA Remote alarm module
- ZADEXS2-NA (P) Plus Pack, (2S) 2 Single Aisles, (AN) Alarming and Non-Alarming config.
- ZADEXS2-NN (P) Plus Pack, (2S) 2 Single Aisles, (NN) 2 Non-Alarming config.
- ZADEXS1-NAN (P) Plus Pack, (1D) 1 Dual Aisle, (NAN) 2 Non Alarming and 1 Alarming config.
- ZADEXS1-AN (P) Plus Pack, (1S) 1 Single Aisle, (AN) Alarming and Non-Alarming config.
- ZADEXS1-NN (P) Plus Pack, (1S) 1 Single Aisles, (NN) 2 Non-Alarming config.

Ultra•Lane



DESCRIPTION

The Sensormatic® Ultra•Lane (AMS-1080) System is an Ultra•Max® Acousto Magnetic system that features a single pedestal per checkout lane design. The system is designed to cover up to four lanes with one controller and dual lanes up to 1.8m in width.

Created for supermarkets and hypermarket, as well as other narrow checkout lane retailers, the Ultra•Lane provides superb detection protection with minimal impact on shopping cart passage, customers at the counter, visibility, or store aesthetics.

COVERAGE

	U.S.	Europe
Single antenna	X	80cm width and 150cm < height
Single antenna- auxiliary ferrite antenna	X	90cm width and 150cm < height

FEATURES/BENEFITS

- The Ultra•Lane antenna utilizes a creative aesthetic look while maintaining a robust and durable design.
- The Ultra•Lane antenna attaches either to the side of a checkout counter or to a railing post with supplied hardware. If the configuration utilizes a Ranger antenna, it mounts to the side of an opposing counter.
- The Ultra•Lane System detects EAS tags/labels in a checkout lane, with up to four lanes independently supported. The detector consists of an antenna controller

and one of the antenna combinations listed below:

- One Ultra•Lane antenna set up as a transceiver for each checkout lane (two lanes maximum)
- One Ultra•Lane antenna set up as a transmitter and one Ranger antenna set up as a receiver for each checkout lane (two lanes maximum)
- One Ultra•Lane antenna set up as a transmitter on a railing post between two adjacent checkout lanes with an outboard Ranger antenna for each aisle (four lanes maximum).

SPECIFICATIONS

Power Supply

- Primary input: 100-120Vac or 200-240Vac @ 50-60Hz
- Primary power fuse: 2A, 250V, slo-blow, hi-breaking
- Input power: <100W
- Transmitter Operating frequency: 58 (±200Hz)
- Transmit burst duration: 1.6ms
- Transmit current maximum: 15A peak
- Burst Repetition Rate:
- Based on 50Hz ac: 75Hz or 37.5Hz
- Based on 60Hz ac: 90Hz or 45Hz

Receiver

- Center frequency: 58kHz

Environmental

- Ambient temperature: 0°C to 50°C (32°F to 122°F)
- Relative humidity: 0 to 90%
non-condensing

Regulatory Compliance

- EMC: 47 CFR, Part 15, ETSI EN 300330-1 V1.3.2 (2002), ETSI EN 300330-2 V1.1.1 (2001-06), ETSI EN 301489-3 V 1.4.1 (2002-08), ETSI EN 301489-1 V 1.4.1 (2002-08), RSS210
- Safety: UL 60950, CSA C22.2 No 60950, EN 60950

Antenna

- HxWxD: 121.3x36.4x3.6cm
- Width with bracket set: 43.4cm
- Weight: 5.2 kg (11.5 lbs.)

Controller

- LxWxH: 37.3x27.8x13.4cm
- Weight: 3.34 kg (7.34 lbs.)

Product Codes

- ZEAISLEPP Ultra•Lane Controller
- ZSAISLE Ultra•Lane Single Antenna
- 0352-0199-01 Checkout Mount Bracket Kit
- 0352-0198-01 Pole Mount Install Kit
- ZKRANGER-DG Dark Grey Ranger Antenna Kit
- 0352-0225-01 Controller Shroud
- 0352-0221-01 Antenna Spacers

One Single Lane Configurations

- ZAAISLE-1C Single Antenna System - One Controller and One Antenna
- ZAAISLE-1F1C Single Antenna System - One Controller, One Antenna and One Pair of Rangers

Two Single Lanes Configurations

- ZAAISLE-2C Dual Antenna System - One Controller and Two Antennas
- ZAAISLE-2F2C Dual Antenna System - One Controller, Two Antennas and Two Pairs of Rangers

Dual Lanes Configurations

- ZAAISLE-1P Single Antenna System - One Controller, One Antenna and One Pole Mount Bracket (One Dual Lane)
- ZAAISLE-2P Dual Antenna System – Controller, Two Antennas and Two Pole Mount Brackets (Two Dual Lanes)
- ZAAISLE-1F2P Single Antenna System - One Controller, One Antenna, One Pole Mount Bracket and Two Pairs of Rangers (One Dual Lane)
- ZAAISLE-2F4P Dual Antenna System - One Controller, Two Antennas, Two Pole Mount Brackets and Four Pairs of Rangers (Two Dual Lanes)

Floor-Max® II



DESCRIPTION

The Floor-Max II System is the European version of the Ultra•Max Digital Floor-Max II system. The system's antenna is designed for installation below the surface of the floor and out of view. The antenna can be installed in most types of floors and is outdoor rated. The Floor-Max II System is an especially popular anti-shoplifting system for mall stores and others where aesthetics and performance are primary requirements.

COVERAGE

	U.S.	Europe
Single panel shielded	X	1.8 m (6')
Dual panels shielded	X	3.6 m (11.8')
Single panel shielded w/ dual Ranger	X	2.5 m (8')
One antenna with two Satellite Receivers	X	3 m (9.8')
One antenna with two Pro-Max Plus pedestals	X	6.6 m (21.7')

FEATURES/BENEFITS

- A single detector antenna can cover exits up to 1.8 m (6') wide.
- Up to four antennas (two Tx and two Rx) can be installed using only one Ultra*Post Plus Controller.
- Wider widths are possible using multiple Controllers.
- The system is suitable for both ground-level and elevated installations. Elevated installations require the Floor-Max shield.
- A remote alarm unit provides both visual and audible alarms.

SPECIFICATIONS

Power Supply (European)

- Primary Input: 100-120Vac or 220-240Vac @ 50-60Hz
- Primary Power Fuse: 2A, 250V
- Current Draw: 1.5A @ 120; 1A @ 240
- Input Power: <120W

Transmitter

- Outputs: 2 ports
- Operating Frequency: 58 or 60kHz (±200hz)
- Transmit Burst Duration: 1.6ms
- Transmit Current: 8A peak
- Burst Repetition Rate: 37.5Hz
- (normal) based on 50Hz ac; 45Hz
- (normal) based on 60Hz ac

Receiver

- Inputs: 2 ports (2 antennas multiplexed)
- Center Frequency: 58 or 60kHz

Alarm

- Alarm Relay Output: DPDT contacts
- Lamp/Audio Duration: 1-30 sec. (1 sec. increments)

Environmental

- Ambient Temperature: 0 C to 50 C (32 F to 122 F)
- Relative Humidity: 0-90% non-condensing

Regulatory

- Safety: UL1950, Can/CSA C22.2, No. 950
- EMC: 47 CRF, Part 15, ETS 300330 1994, EN 300330 1998, ETS 300683 1997, EN 61000-3-2 1995/A2: 1998, EN 61000-3-3 1995

Floor-Max Plus II Antenna

- LxWxD: 147 x 70 x 1.85 cm (58 x 28 x 0.73")
- Weight (w/ long cable): 13.6 kg (30 lbs.)

Floor-Max Plus II Shield

- LxWxD: 180 91 x 1 cm (71 x 36 x 4")
- Weight (tray): 6kg (13.25 lbs.)
- Weight (196 tiles): 89kg (196 lbs.)

Product Code (Europe) *

- ZAFM9030-1 FloorMax Single
- ZAFM9030-1SKY FloorMax Single with SkyMax
- ZAFM9030-1F2 FloorMax Single with Dual Ranger
- ZAFM9030-1S2 FloorMax Single with Dual Satellite
- ZAFM9030-2 FloorMax Dual
- ZAFM9030-2SKY FloorMax Dual with Dual SkyMax
- ZAFM9030-3 FloorMax Triple
- ZAFM9030-3SKY FloorMax Triple with Triple SkyMax
- ZAFM9030-4 FloorMax Quad
- ZAFM9030-4SKY FloorMax Quad with SkyMax
- ZAFM4-2 Dual Digital Floor-Max Antenna System
- ZAFM4-2SKY Dual Digital Floor-Max with SkyMax
- ZAFM4-3 Triple Digital Floor-Max Antenna System
- ZAFM4-3SKY Triple Digital Floor-Max with SkyMax
- ZAFM4-4 Quad Digital Floor-Max Antenna System
- ZAFM4-4SKY Quad Digital Floor-Max with SkyMax

*See Digital Floor-Max II for U.S. use

Digital Floor-Max® II



DESCRIPTION

The system's thinner detection antenna is designed for installation below the surface of the floor and out of view. The antenna can be installed in most floor types including concrete, wood, and others. The antenna is outdoor rated. The Digital Floor-Max II System is an especially popular anti-shoplifting system for mall stores and others where aesthetics and performance are primary requirements.

COVERAGE

	U.S.	Europe
Single panel	2.1 m (7')	X
Single panel shielded	3.5 m (6')	X
Single panel shielded, dual Rangers	3 m (10')	X
Single panel shielded, Satellite Receiver	3.6 m (12')	X

FEATURES/BENEFITS

- A single detector antenna can cover exits up to 2.1 m (7') wide. Up to two transceiver antennas can be installed using one Ultra•Controller 4 Channel.
- The system is suitable for both ground-level and elevated installations. Elevated installations require Floor-Max shield.
- A remote alarm unit provides both visual and audible alarms.
- A plate mounted near the system contains LEDs that allow customers to review the status of the system and provides an RS232 connection for service personnel to communicate with the system safely.

SPECIFICATIONS

Power Supply (non-European)

- Primary Input: 100-120Vac or 220-240Vac @ 50-60Hz
- Primary Power Fuse: 5A, 250V
- Current Draw: 2A @ 120; 1.2A @240
- Input Power: <200W

Transmitter

- Outputs: 2 ports
- Operating Frequency: 58kHz (±200hz)
- Transmit Burst Duration: 1.6ms
- Transmit Current: 16A peak
- Burst Repetition Rate: 75 or
- 37.5Hz based on 50Hz ac; 90 or 45Hz (normal) based on 60Hz ac

Receiver

- Inputs: 4 ports
- Center Frequency: 58kHz

Alarm

- Alarm Relay Output: DPDT contacts
- Lamp/Audio Duration: 1-10 sec. (1 sec. increments)

Environmental

- Ambient Temperature: 0 C to 50 C (32 F to 122 F)
- Relative Humidity: 0-90% non- condensing

Regulatory

- Safety: UL1950, Can/CSA C22.2, No. 950
- EMC: 47 CRF, Part 15, RS 210 Issue 3

Antenna

- (LxWxD): 147x70.5x1.85 cm (57.8" x 27.75" x 0.75")
- Weight: 10.4 kg (23 lbs.)

Floor-Max Shield

- LxWxD: 180 x 91 x 1 cm (71 x 36 x 4")
- Weight (tray): 6kg (13.25 lbs.)
- Weight (196 tiles): 89kg (196 lbs.)

Floor-Max ShieldDigital 216 controller with bracket

- (LxWxH): 50.7 x 37.7 x 15 cm (20" x 14.8" x 5.9")
- Weight: 8.6 kg (19 lbs.). Enclosure: 2.4 kg (5.25 lbs.)

Cap Board Enclosure

- (LxWxD): 47.5 x 37.8 x 8.5 cm (18.7" x 14.9" x 3.3")
- Weight: 2.4 kg (5.25 lbs.)

Product Codes (U.S.)*

- ZSFM4 Floor-Max Antenna
- ZSFM4-18 Floor-Max Antenna (18m)
- ZAFM4-1 Digital Floor-Max Single Antenna System – non-European
- ZAFM4-1SR2 Single Digital FloorMax II System with Dual Satellite Receivers
- ZAFM4-2 Digital Floor-Max Dual Antenna System
- ZAFM4-2SR2 Dual Digital FloorMax II System with Dual Satellite Receivers

- ZAFM4-3 Digital Floor-Max Triple Antenna System

- ZAFM4-4 Digital Floor-Max Quad Antenna System

Product Codes (U.S.)* (With Digital 216 Controller)

- ZADFM2-1 One Digital Floor-Max II antenna, 1 Digital 216 Controller, 1 enclosure, 1 power cord, 1 install kit.
- ZADFM2-2 Two Digital Floor-Max II antennas, 1 Digital 216 Controller, 1 enclosure, 1 power cord, 1 install kit.

- ZADFM2-3 Three Digital Floor-Max II antennas, 2 Digital 216 Controllers, 2 enclosures, 2 power cords, 1 install kit.
- ZADFM2-4 Four Digital Floor-Max II antennas, 2 Digital 216 Controllers, 2 enclosure, 2 power cords, 1 install kit.
- ZSDFM2-A Antenna only with 12m (40') cable
- ZSDFM2-A18 Antenna only with 18 m (60') cable

**See Floor-Max II for European use*

Auxiliary Antennas

Auxiliary Antennas extend the detection performance of Ultra•Max detector systems. Ranger and Sky•Max are small, lightweight receivers that use ferrite technology to provide excellent performance with minimal impact on a store's aesthetics. The benefits of auxiliary antennas include:

- Enhanced detector performance
- Small, lightweight, minimal impact on aesthetics
- Operate off same power supply as detectors
- Easy to install

IMPORTANT NOTE: Information subject to change without notice. Not all products in the catalog are available worldwide. Consult your local price book for availability.

Ranger Antennas



DESCRIPTION

Ranger antennas are small Ultra•Max receivers that can be installed in place of a receiver pedestal or to extend detection performance of a detection system. Its small size makes a minimal impact on the exit, is easy to conceal, and can be a cost-effective alternative to the addition of a pedestal. Ranger antennas can be installed on walls, doorframes, glass, or metal surfaces using screws or double-sided tape.

FEATURES/BENEFITS

- Extends the detection field, which may eliminate need for a secondary pedestal.
- Low-cost and easy to install.
- Minimal impact on aesthetics.

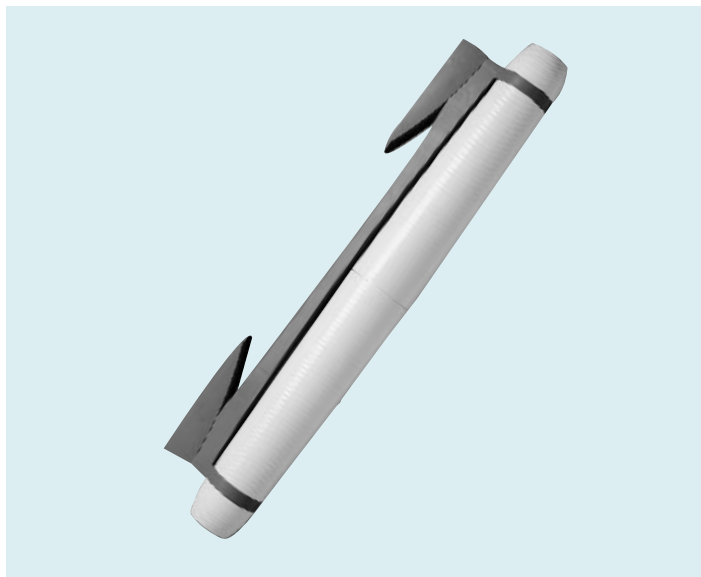
DIMENSIONS

- (HxWxD): 24 x 3.8 x 8 cm (9.5 x 1.5 x 3 in.)
- Weight: 0.5 kg (1 lb.)

PRODUCT CODES

- ZKRANGER-1: Ranger Kit (covers one side of the pedestal)
- ZKRANGER-2: Ranger Kit (covers both sides of the pedestal)

Satellite Receiver



DESCRIPTION

Sensormatic's Satellite Receiver is a small Ultra•Max® EAS receiver antenna that delivers maximum anti-shoplifting protection with minimal visual impact on store entrances. The small, unobtrusive Satellite Receiver can eliminate the need for one or more pedestals in a traditional EAS system, giving retailers with wide exits and high aesthetics an Open Architecture Solution. Satellite Receiver mounts to walls or doorframes. Its neutral gray color blends with any décor and can be customized with aerosol paint by the retailer for a perfect match. Satellite Receiver is compatible with all Ultra•Max detection systems.

FEATURES/BENEFITS

- Open architecture solution providing wide exit coverage with minimal visual impact on the store's décor.
- Minimal backfield of approximately 1.5 ft. (0.5 m) allows tagged merchandise close to the exit.
- Mounts easily to walls or doorframes; can be concealed with custom made fixtures.

SPECIFICATIONS

Receiver

- Operating Frequency: 58-68kHz
- Rx Coil Resistance: 14 ohms (±5%)

Environmental

- Ambient Temperature: 0 to 50°C (32°F–122°F)
- Relative Humidity: 0 to 90% non-condensing

Regulatory (M4000 CE/Ultra•Post – non-European)

- Emissions: 47 CFR Part 15
- Safety: UL 1950; Can/CSA C22.2; No. 950-95

Regulatory (M2000/Ultra•Post – European)

- Emissions: 47 CFR Part 15; ETS 300330; ETS 300683
- Safety: UL 1950; Can/CSA C22.2; No. 950-95; EN 60950

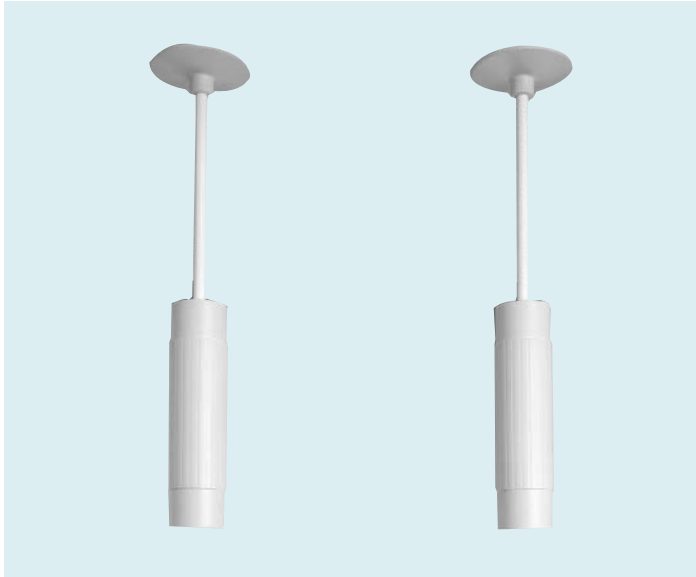
Mechanical

- Length: 72.5 cm (28.5 in.)
- Diameter: 8.7 cm (3.4 in.)
- Depth (w/bracket): 14.3 cm (5.6 in.)
- Weight: 4.5 kg (10 lbs.)

PRODUCT CODES

- ZKRXMULLMT: Mullion Mount Satellite Receiver

Sky•Max®



DESCRIPTION

Sky•Max is a receiver antenna designed to enhance the tag and label detection performance of Floor-Max systems. Sky•Max antennas are attractively designed to complement the retail environment, and for added economy, operate off the same controller as the Floor-Max system. The antennas install at a maximum 2.4m (8 ft.) above either new or existing Floor-Max systems. They are available with two mounting options: pendant mounts for ceiling of various heights or recessed mounts for low ceilings.

FEATURES/BENEFITS

- Suitable for retrofits and new installations.
- Small, attractive "light can" antenna design disguises Sky•Max's true purpose.
- Recessed or pendant mounting options accommodate ceilings from 2.4m (8 ft.) up to 20 ft. (6m).

SPECIFICATIONS

Receiver

- Inputs: 4 detection unit ports (software controlled and configured)
- Operating Frequency: 58-68kHz
- Rx Coil Resis. 14 ohms ($\pm 5\%$)

Environmental

- Ambient Temperature: 0 to 50°C (32°F–122°F)
- Relative Humidity: 0 to 90% non-condensing

Mechanical

Sky•Max Antenna

- Length: 29cm (11.4")
- Diameter: 8cm (3.1")
- Weight: 1.4kg (3 lbs.)

Diff Amp Enclosure

- Length: 22cm (8.7")
- Width: 12cm (4.7")
- Depth: 6cm (2.4")
- Weight: 0.1kg (.25 lbs.)

PRODUCT CODES

- ZKSKYMAX: Sky•Max Antennas
- ZPSKYDIF: 2-Channel Noise Canceling Diff Amp Board
- ZPSKYPM: Pendant Mount Kit
- ZPSKYRM: Recessed Mount Kit
- ZPSKYEXT: 48 in. Extension Kit
- ZPSKYBOX: Metal Enclosure

Auxiliary Floor Receiver



DESCRIPTION

The Auxiliary Floor Loop receiver connects to a compatible Ultra•Max controller (Ultra•Controller – 4 Channel, Ultra•Controller – 2 Channel, 8 Amp and ADS Digital 216) to provide an increased floor-level detection field. The Auxiliary Floor Loop receiver can be used in exits with pedestals spaced up to maximum of 9' (2.74m) apart and a minimum of 5' (1.5m). Two loops can also be used in a dual configuration when one controller is powering two exits or one exit is utilizing a split (three pedestals) configuration.

FEATURES/BENEFITS

- Improved system performance with certain tag orientations up to 4' (1.22m) high.
- Enhances the lower detection zone which is critical for retailers that tag or source tag shoes, which could be worn on the feet of potential shoplifters.
- Effective in increasing the detection of any tagged item that might be stuffed into the bottom of a shopping bag that is held close to the floor.
- Compatible with Digital ProMax, Digital Euro ProMax, DoorMax and UltraPost pedestals.

SPECIFICATIONS

Dimensions

Receiver Box

Height: 9.2cm (3 5/8in)
Width: 12.0cm (4 3/4in)
Depth: 5.3cm (2in)

Interconnect cable

Length: 12m (40ft)
Receiver loop
Length: 15m (50ft)

Floor Cut

Dimensions: .75" (1.9cm) deep below the level of the concrete and .25" (0.64cm) wide

Environmental

Operating Temperature:
0° to 50°C (32° to 122°F)
Relative Humidity:
0 to 90% non-condensing

Regulatory Compliance

MC 47 CFR, Part 15
EN 300 330
EN 301 489
RSS 210
Safety
UL 60950
CSA C22.2 No 60950
EN 60950

Product Code

- ZSLOOP-AUX

Accessories

Ultra•Max accessories offer a wide range of products, such as alarm lights, message units, and shields, to complement detector systems. They may be optional or mandatory, depending on the nature of the accessory or how the system is being used. The benefits of accessories include:

- Greater customer choice
- Value added opportunities
- Enhanced system durability
- Added applications

IMPORTANT NOTE: Information subject to change without notice. Not all products in the catalog are available worldwide. Consult your local price book for availability.

Outdoor Enclosure



DESCRIPTION

The Ultra•Max Outdoor Enclosure is an all-weather enclosure that houses the Controller and associated devices needed for an outdoor Ultra•Max detection system, including Floor-Max. The unit will accommodate a Controller, transformer, alarm or message boards, two alarm counters, heater, fan, and optional drop-down panel for Floor-Max.

DIMENSIONS

(HxWxD) 168 x 61 x 33 cm (66 x 24 x 13 in.)

Weight: 74 lb. (33.5kg)

PRODUCT CODES

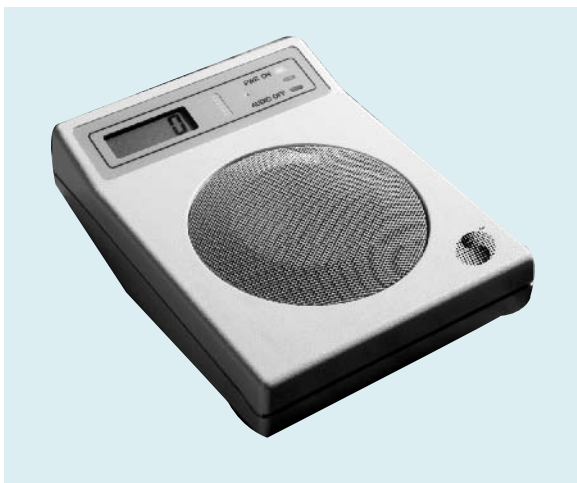
ZPUODPP-ENC Outdoor Enclosure

ZC40-XP Outdoor 3-Tone Alarm Board

ZC45-XP Outdoor Message Alarm Board

ZPPANEL Outdoor Capacitor Panel for Floor-Max

3-Tone Digital Alarm



DESCRIPTION

The 3-tone digital alarm is an audio/visual alarm device for Ultra•Max detection systems. The unit also provides an alarm counter display. Alarm tones and durations are selectable, but not accessible from outside the unit.

DIMENSIONS

(HxWxD) 20 x 15 x 6.4 cm (8 x 5.9 x 2.5 in.)

PRODUCT CODE

ZC30-XP

Message Unit



DESCRIPTION

The message unit is a voice alarm device for Ultra•Max detection systems. The unit also includes a visual alarm indicator and alarm counter display. Standard and customized vocal messages are available in various languages.

DIMENSIONS

(HxWxD) 20 x 15 x 6.4 cm (8 x 5.9 x 2.5 in.)

PRODUCT CODE

ZC35-XP

Remote Alarm Beacon



DESCRIPTION

The remote alarm beacon is an amber light designed to visually alert personnel to a live label or tag in the detection zone. The beacon can be installed on walls or ceilings.

DIMENSIONS

Height: 3.6 in. (9.2cm)
 Lens Diameter: 3.69 in. (9.25cm)
 Base Diameter: 5 in. (12.7cm)

PRODUCT CODE

0351-0556-011

Alarm Light for Pro-Max® II



DESCRIPTION

The ZPEXLAMP alarm light provides a red visual alarm for Pro-Max II pedestals (Pro-Max II pedestals do not have built-in alarm lights). If installed on the wall above each pedestal (max. distance is 50 ft. or 15m), the alarm light can provide zone detection. The light is wired to the power pack. A mounting bracket (not shown) is included with the light.

DIMENSIONS

(LxWxD) 11.7 x 1.1 x 1.9 cm (4.6 x 0.4 x 0.7 in.)

PRODUCT CODE

ZPEXLAMP

Hand-Held Verifier



DESCRIPTION

The Ultra•Max Hand-Held Verifier detects the presence of active Ultra•Max 58kHz labels/tags inside shopping bags, boxes, crates, etc. The lightweight, portable device includes a combo charger/holder (can be wall mounted) and a power supply. The Verifier is especially useful for auditing incoming source tagged merchandise.

DIMENSIONS

Wand length: 20.25 in (51cm)
 Wand weight: 22.6 oz (640g)
 Charger weight: 8.5 oz (240g); battery operating time: 5 hours

PRODUCT CODES

U.S.: ZB001-NA
 Europe: ZB002-F

Ultra*Post® Shield



DESCRIPTION

Ultra*Post Shield is an accessory that can be mounted behind an Ultra*Post to reduce the detector's backfield. The reduction allows tagged merchandise to be placed closer to detectors. The Shield installs on new or existing Ultra*Post detectors at 15 cm (6 in.) from the detector. The unit offers maximum backfield protection without obscuring the Ultra*Post alarm light.

DIMENSIONS

(HxWxD) 142 x 61 x 21 cm (56 x 24 x 8.5 in.)

Weight: 24.9kg (55 lbs)

PRODUCT CODE

ZPUSHLD

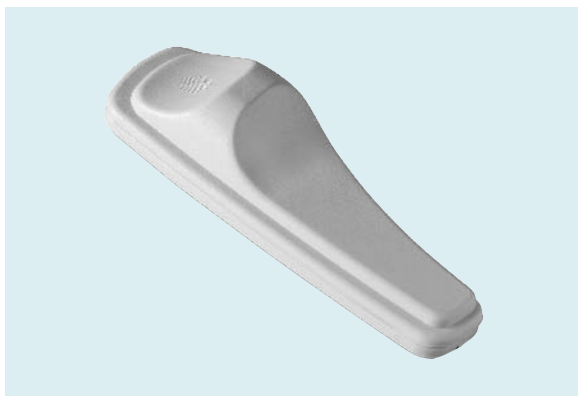
Hard Tags

Sensormatic hard tags are built for performance, toughness and ease of use. They are constructed of sturdy plastic housings and time-tested locking mechanisms, yet attach easily and, using Sensormatic's reliable detachers, are removed quickly at the point-of-sale. Hard tags are offered in a variety of styles and attachments. The benefits of Sensormatic hard tags include:

- High defeat resistance
- Wide variety of attachment methods
- Excellent detection properties
- Visual deterrent to theft
- Easy to apply
- Easy to remove at the point-of-sale
- Choice of powered or manual detachers

IMPORTANT NOTE: Information subject to change without notice. Not all products in the catalog are available worldwide. Consult your local price book for availability.

SuperTag® II



DESCRIPTION

SuperTag II is a lighter, narrower version of SuperTag Plus with superb detection performance and high defeat resistance. The reusable tag contains a new spring gate feature that enables exceptional tack retention while thwarting attempts to detach the tag with any device other than a certified SuperTag detacher. SuperTag II is compatible with all SuperTag detachers and accessories. Available in gray or black, 58 kHz.

DIMENSIONS

LxWxD: 84 x 30.5 x 18.8 mm (3.3 x 1.2 x 0.74 in.); 14.3 g (0.5 oz.)

PRODUCT CODES

ZL300-GNP Gray SuperTag II, MJ200-G gray tack
ZL300-BNP Black SuperTag II; MJ200-B black tack

SuperTag® Plus



DESCRIPTION

SuperTag Plus is the traditional SuperTag reusable hard tag. Like the original SuperTag, the Plus version contains non-deactivatable Ultra•Max label material and can be attached to merchandise via a pin tack, a lanyard, Versatie or VersaTack®. The reusable tag is compatible with all SuperTag detachers and accessories, 58 kHz.

DIMENSIONS

(LxWxD): 86 x 30 x 18.8 mm (3.4 x 1.2 x 0.74 in.)
weight: 16.8 g (0.59 oz.)

PRODUCT CODES

ZL202-GNP SuperTag Plus gray; ZL202-BNP SuperTag Plus black
MJ200-G gray tack; MJ200-B black tack

Ultra•Ink™



DESCRIPTION

Ultra•Ink™ is a combination of an Ultra•Max anti-shoplifting EAS tag and a Benefit Denial ink tag. Ultra•Ink is an economical, ultra lightweight tag. Its small, yet highly visible design and stronger defeat-resistant clutch offer an attractive solution for soft goods protection. Ultra•Ink incorporates Sensormatic's patented breaker plate and dispersion pad to dispense ink and remove the shoplifting motive by rendering stolen merchandise useless or unsellable if the tag is removed through unauthorized force. Ultra•Ink™ contains an unfreezable, non-toxic, aggressive permanent ink that will permanently damage a garment, thereby denying the benefit of shoplifting. Ultra•Ink™ also contains an embedded SuperTag® II bias resonator to provide the highest anti-theft tag detection rate, even through booster bags or metal carts. It is fully compatible with all Ultra•Max systems.

DIMENSIONS

L x W x H: 48.0 mm x 40.0 mm x 16.4 mm (1.89" x 1.57" x 0.65")
Weight: 0.70 oz.

PRODUCT CODES

ZL110BY-WL Ultra•Ink With Lock Blue/Yellow (English Warning Label)
ZL110BY-W Ultra•Ink Without Lock Blue/Yellow (English Warning Label)

SuperTag® Combo



DESCRIPTION

SuperTag Combo is a 58 kHz reusable hard tag that alarms both Ultra•Max and microwave systems. The Combo tag is 10mm (0.4 in.) longer than SuperTag. Like SuperTag, the Combo can be attached via pin tack, lanyard, Versatie or VersaTack®. Compatible with all SuperTag detachers and accessories.

DIMENSIONS

(LxWxD): 105 x 29 x 18.8 mm (4.1 x 1.1 x 0.74 in.)

Weight: 19 g (0.67 oz.)

PRODUCT CODES*

EL200-G SuperTag Combo gray; EL200-B SuperTag Combo black
MJ200-G gray tack; MJ200-B black tack

*available only in the U.S.

SuperTag® Mini



DESCRIPTION

SuperTag Mini is a small, lightweight reusable SuperTag design suited to protecting lingerie, scarves, accessories, and similar goods. The tag reduces the risk of pulls, snags, and stretching of delicate fabrics. SuperTag Mini uses a Certified Electronic Assembly to alarm Ultra•Max systems and is compatible with all SuperTag detachers, 58 kHz.

NOTE: All ferrite-based tags are subject to detuning by metal (zippers, metal buttons, etc.) and must not be used with VersaTack®

DIMENSIONS

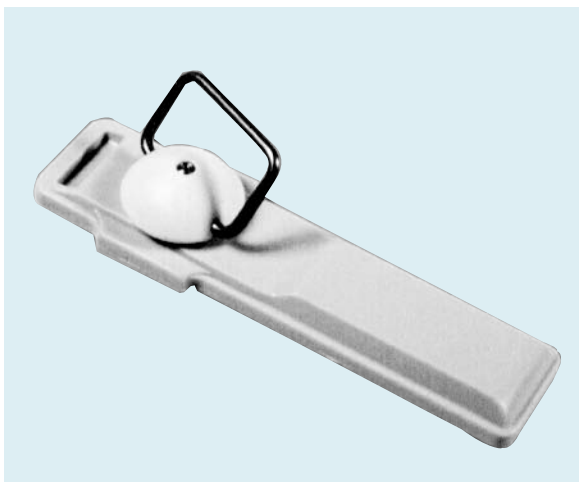
(HxWxD) 5.4 x 3.18 x 1.8 cm (2.13 x 1.2 x 0.72 in.)

Weight 11.5 g (0.4 oz.)

PRODUCT CODES

ZLSTMIN, SuperTag Mini CA, gray
MJ200-G, SuperTag tack, gray

Ultra*Gator®



DESCRIPTION

Ultra*Gator is a reusable hard tag designed to be a highly visible shoplifting deterrent. It can be attached to merchandise via pin tack, lanyard, Versatie or VersaTack. Ultra*Gator differs from the SuperTag in both appearance and locking mechanism. Compatible with either the Ultra*Gator handheld or power detachers, 58 kHz.

DIMENSIONS

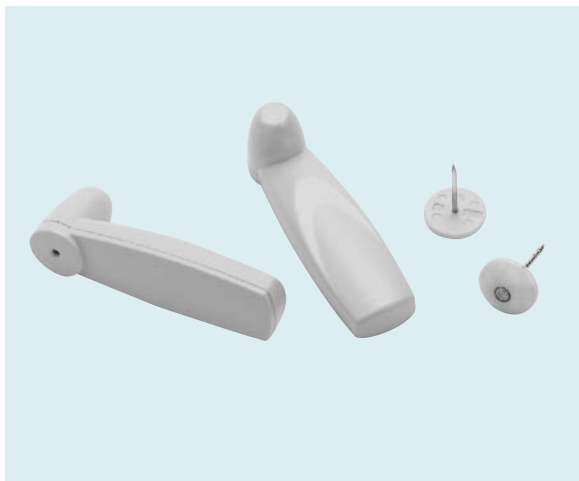
(LxWxD): 95 x 29 x 16.4 mm (3.7 x 1.1 x 0.25 in.)

Weight: 13.2 g (0.47 oz.)

PRODUCT CODES

ZL91BXP, Ultra*Gator tag
MJ25-2P, Tack (white)

AMT-1000 Tag



DESCRIPTION

The AMT-1000 tag is a small, lightweight reusable clutch hard tag made with genuine Ultra•Max resonator bias material for superb detection capability. The tag is perfect for all kinds of soft goods, especially delicates, shoes, hats, and similar merchandise. The AMT-1000 tag is compatible with the Sensormatic AMD-1000 magnetic decoupler, 58 kHz.

DIMENSIONS

(LxWxH): 55.8 x 16.2 x 18.6 mm (2.2 x 0.64 x 0.73 in.)

Weight: 7.2 g (0.25 oz.)

PRODUCT CODES

ZL31-G gray tag

MJTT-1 Grooved tack

MJLT-1 Smooth tack

UltraLite CA



DESCRIPTION

UltraLite CA and UltraLite Triangle CA are small, lightweight reusable tags designed to protect shoes, fine garments, lingerie, and similar merchandise. The tags use a ferrite-based Certified Electronic Assembly to alarm Ultra•Max® systems, 58 kHz.

NOTE: All ferrite-based tags are subject to detuning by metal (zippers, metal buttons, etc.) and must not be used with VersaTack™

DIMENSIONS

UltraLite CA (HxWxD) 41 x 12.7 x 21.3 mm (1.61 x 0.5 x 0.8 in.)

UltraLite Triangle CA (HxWxD) 29 x 30 x 21.3 mm (1.1 x 1.2 x 0.8 in.)

Weight 8.8 g (0.3 oz.)

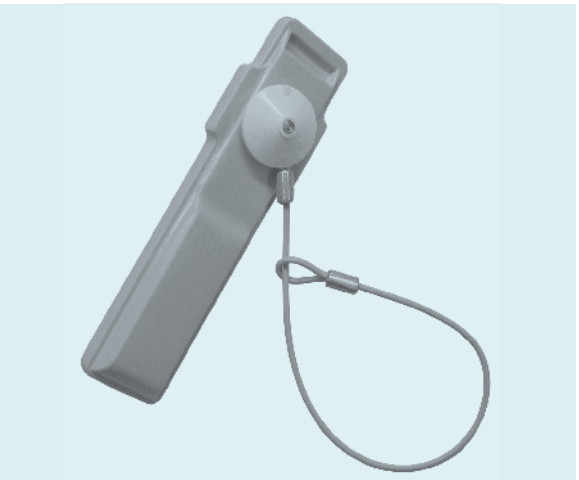
PRODUCT CODES

ZLULT-L, UltraLite CA hard tag (no tack)

MJTT-1, Grooved tack

MJLT-1, Smooth tack (no grooves)

MXGL Lanyard



DESCRIPTION

The MXGL lanyard is suitable for a variety of merchandise, including tools, sporting goods, and leathers. The lanyard features loops on both ends, making it appropriate for use with Ultra*Gator™ hard tags and others. The stainless steel cable provides a high level of strength and resistance to cutting. The cable is compatible with all Ultra•Max Acousto-Magnetic hard tags, including ferrite-based tags that contain the Sensormatic certified electronic assembly.

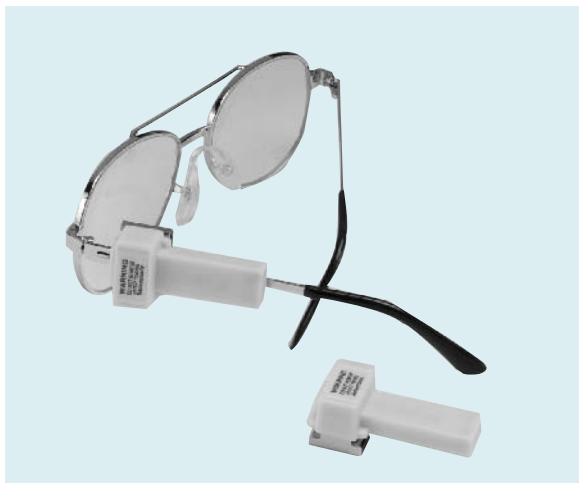
DIMENSIONS

Length: 19 cm (7.5 in)

PRODUCT CODES*

MXGL Generic lanyard with loops on both ends

Ultra•Lock®



DESCRIPTION

Ultra•Lock is a reusable EAS tag designed to protect eyewear and jewelry from theft without interfering with try-ons. It contains non-deactivatable 58 kHz Ultra•Max label material inside a protective cavity and attaches to merchandise via a clamp lock mechanism that comes in four different sizes.

DIMENSIONS

Housing (LxWxH): 50 x 24 x 12 mm (1.97 x .95 x .47 in.)

Weight: 7.4 g (0.26 oz.)

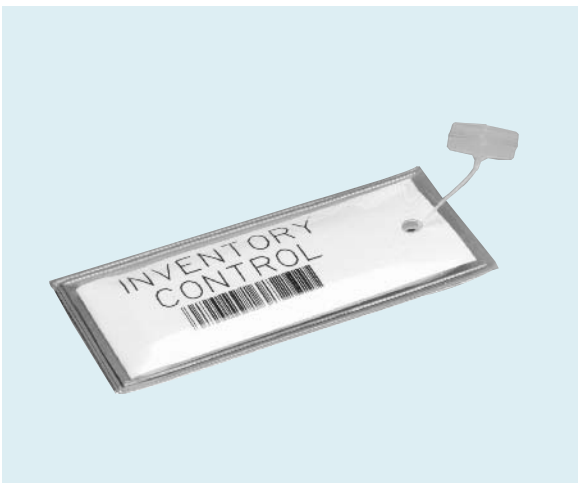
Clamp A = 15 mm (.59 in.); Clamp B = 16 mm (.64 in.); Clamp C = 17 mm (.68 in.); Clamp D = 18 mm (.72 in.)

PRODUCT CODES

Ultra•Lock: ZLULOCK-1

Clamp size A: ZLUCLIP-1; Clamp size B: ZLUCLIP-2; Clamp size C: ZLUCLIP-3; Clamp size D: ZLUCLIP-4

Soft Tag



DESCRIPTION

Soft Tag is a reusable Ultra•Max label sheathed inside clear plastic. The finished "tag" is attached to merchandise via a plastic cord, usually using a pricing label gun. It can also be attached via a standard Ultra•Gator pin or micro clamp. Soft Tag is often used with soft goods and some sporting goods. Custom logo printing is available.

DIMENSIONS

(LxW): 60 x 29 mm (2.4 in. x 1.1 in.)

PRODUCT CODE

ZL60-1 White, ZL60-2 Barcode, ZL60-S Custom.

Versatie



DESCRIPTION

Versatie is an adjustable, reusable plastic strap that attaches SuperTags, Ultra*Gator, and other hard tags to a variety of merchandise such as power tools, hand bags, luggage, electronics and sporting goods. Available in three different lengths. A tack is required.

DIMENSIONS

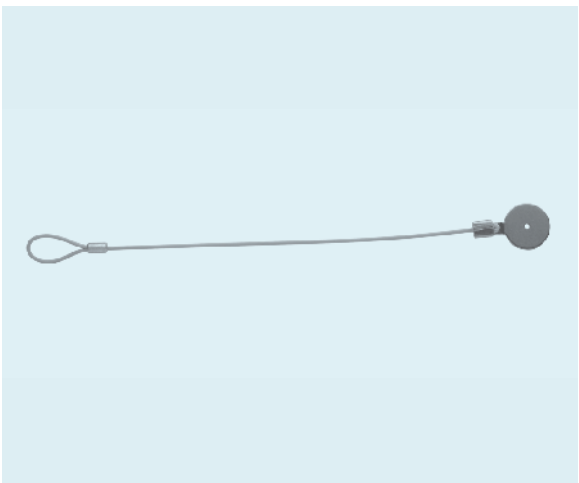
Lengths: 11.5cm (4.5 in.), 15.5cm (6.1 in.), or 25.4 cm (10 in.)

PRODUCT CODES

MXVT15: 15.5 cm (6.1 in.)

MXVT25: 25.4 cm (10 in.)

MXSTL Lanyard



DESCRIPTION

The MXSTL lanyard is suitable for a variety of merchandise, including tools, sporting goods, and leathers. The MXSTL lanyard features a loop on one end and an "eye" on the other end for use with all SuperTag® hard tags. The stainless steel cable provides a high level of strength and resistance to cutting. The cable is compatible with all Ultra•Max Acousto-Magnetic hard tags, including ferrite-based tags that contain the Sensormatic certified electronic assembly.

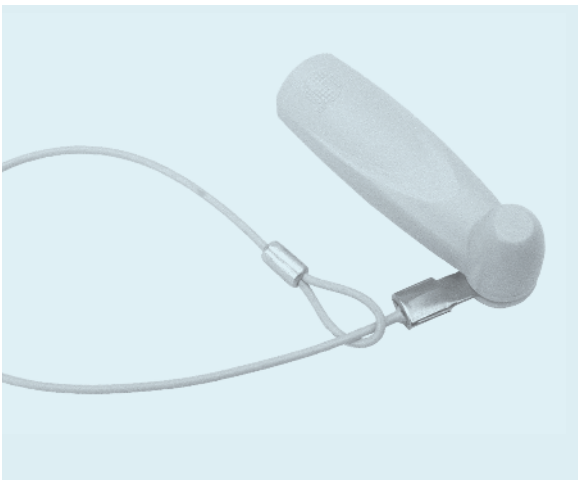
DIMENSIONS

Length: 21 cm (8.25 in)

PRODUCT CODES

MXSTL SuperTag lanyard with loop/eye

MXETL Lanyard



DESCRIPTION

The MXETL lanyard is suitable for a variety of merchandise, including tools, sporting goods, and leathers. The new MXETL lanyard features a loop on one end and a smaller "eye" on the other

PRODUCT CODES

MXETL AMT-1000 and UltraLite lanyard with loop/eye

VersaTack®



DESCRIPTION

Versa•Tack is a tack/clip accessory for SuperTag, Ultra*Gator and MicroGator hard tags. It attaches to merchandise via a stainless steel c-clip that slips through or around the item. VersaTack is compatible with existing SuperTag and Ultra*Gator detachers. Do not use with ferrite-based tags.

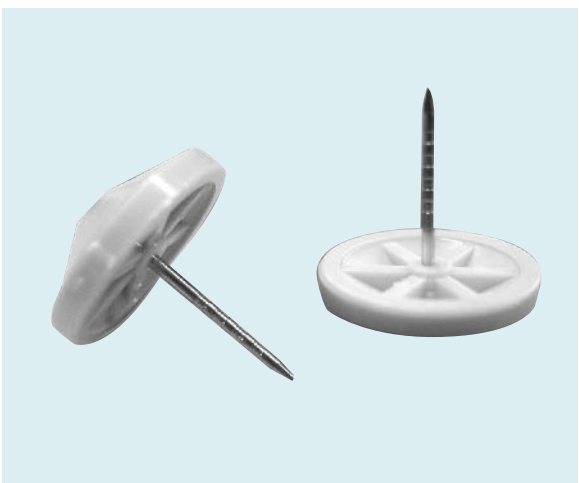
DIMENSIONS

C-clip length, height, diameter: 30 x 20 x 2.4 mm (1.2 x .79 x .1 in.)
C-clip weight: 2gm (.07 oz.)

PRODUCT CODES

MJVT-2, VersaTack
MXVC-1, VersaClip (clip only)

SuperTag® Tack



DESCRIPTION

The SuperTag Tack secures all SuperTag hard tags to soft goods, ensuring a strong, tamper-resistant fit. The four-groove tack allows attachment to merchandise of various thickness and ensures high tack retention. Compatible with lanyards and Versatie. Available in gray or black.

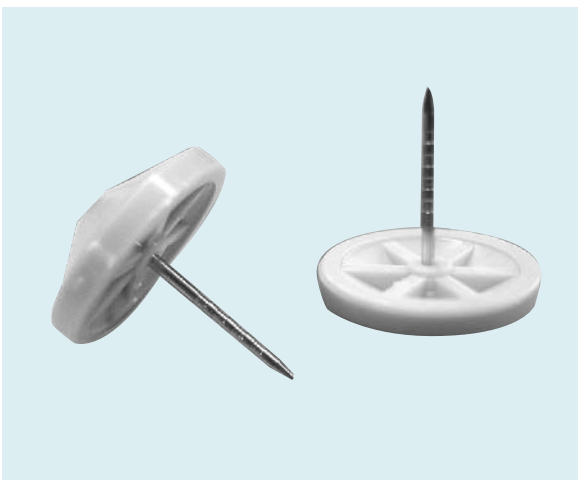
DIMENSIONS

Length: 2.3 cm (0.88 in.)
Head diameter: 2 cm (0.79 in.)

PRODUCT CODES

MJ200-G gray
MJ200-B black

Ultra*Gator® Tack



DESCRIPTION

The Ultra*Gator Tack secures all Ultra*Gator type hard tags to soft goods, ensuring a strong, tamper-resistant fit. The three-groove tack allows attachment to merchandise of various thickness and ensures high tack retention. Compatible with lanyards and Versatie. Available in white.

DIMENSIONS

Length: 2 cm (0.79 in.)
Head diameter: 2 cm (0.79 in.)

PRODUCT CODE

MJ25-2P white tack

Ultra Lite Tacks



DESCRIPTION

Ultra Lite tacks secure Ultra Lite tags and the AMT-1000 tag to merchandise. They are available in two styles: standard and lingerie. The lingerie version is groove-less and designed to minimize risk of snags on delicate fabrics. Available in gray.

DIMENSIONS

Length: 2.2 cm (0.87 in.)

Head diameter: 1.3 cm (0.5 in.)

PRODUCT CODES

MJTT-1 Standard

MJLT-1 Lingerie

Flat Metal Tack



DESCRIPTION

The Flat Metal Tack presents a long pin and a small, flat tack head for use with SuperTag and Ultra*Gator hard tags. The low profile head does not interfere with try-ons of shoes and other soft goods merchandise.

DIMENSIONS

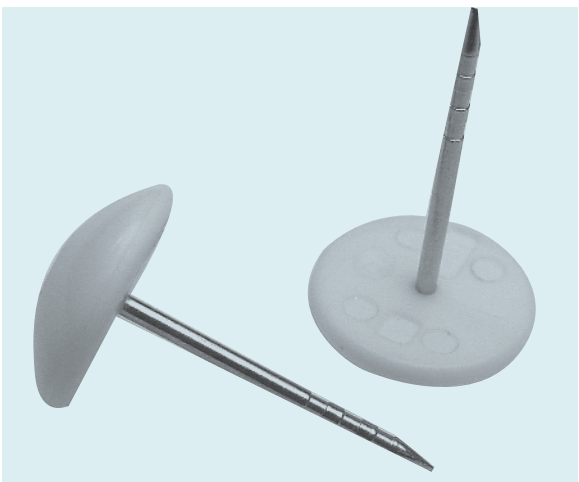
Length: 1.6 cm (0.625 in.)

Head diameter: 1.17 cm (.461 in)

PRODUCT CODE

ST13564 Flat Metal Tack

Long Tacks



DESCRIPTION

Two new, longer hard tag tacks: one is for all SuperTag hard tags; the other is for the AMT-1000 and UltraLite hard tags. The new tacks are longer than existing tacks, so customers now have a choice of using the standard length tacks or the longer tacks for additional applications. The longer tacks are an ideal solution for tagging thick garments, shoes, and other merchandise requiring additional tack length.

DIMENSIONS

MJ200L-W: Length 1.71 cm (.67 in) Head Diameter 1.95 cm (.77 in)

MJ311-W: Length 1.91 cm (.75 in) Head Diameter 1.3 cm (.51 in)

PRODUCT CODE

MJ200L-W Groove Tack, clamp, long (for SuperTags)

MJ311-W Groove Tack, clutch, long (for AMT-1000 and UltraLite tags)

Detachers

Sensormatic offers a variety to detachers to remove hard tags easily and efficiently. The detachers occupy minimal space at the checkout area and can be mounted in a variety of ways to suit most needs. The benefits of Sensormatic detachers include:

- Choice of powered or manual
- Sturdy and durable
- Easy to use and reliable
- Mounting options
- EAS label inside helps prevent unauthorized removal from store

IMPORTANT NOTE: Information subject to change without notice. Not all products in the catalog are available worldwide. Consult your local price book for availability.

AMD-3040 Hand-Held Detacher



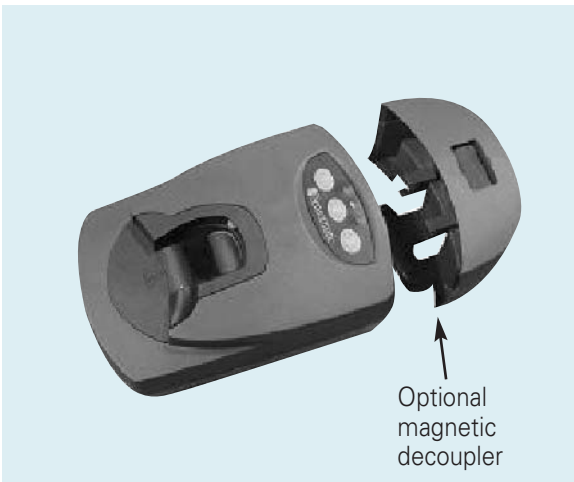
DESCRIPTION

The AMD-3040 Hand-Held Detacher is a manual unit designed to remove SuperTag® hard tags from merchandise. Its ambidextrous design accommodates both right-handed and left-handed users. Tough molded plastic makes the unit both durable and lightweight, while a lanyard helps prevent unauthorized removal from the store. The detacher also provides a channel in the base of the handle that can be used to straighten bent tacks on hard tags. Batteries or electrical power source not required. A stuck tag remover is incorporated into the lanyard.

PRODUCT CODE

MK225

AMD-3050 Power Detacher



DESCRIPTION

The AMD-3050 Power Detacher removes SuperTag® hard tags from merchandise and provides an optional magnetic decoupler for detaching benefit denial, SensorLock, and other clutch-type tag products. The unit can be flush mounted or mounted to the counter top. A data port on the detacher will allow future communication with external devices such as POS and RFID devices. A numeric keypad on the unit allows users to manually lock the detacher to prevent unauthorized use. Electrical power source required.

DIMENSIONS

Free Standing: 150 x 102 x 63 mm (5.9 x 4 x 2.5 in.); 1075 g (2.4 lbs.)

Flush Mount: 220 x 180 x 63 mm (8.7 x 7.1 x 2.5 in.); 1115 g (2.5 lbs.)

Magnetic Decoupler: 60 x 102 x 63 mm (8.7 x 7.1 x 2.5 in.); 150 g (0.3 lbs.)

PRODUCT CODES

MK395DT Desk Top Detacher, Power Supply and Power Cord

MK395DWD Desk Top Detacher, Magnetic Decoupler, Power Supply and Power Cord

MK395FM Flush Mount Detacher, Power Supply and Power Cord

MK395FWD Flush Mount Detacher, Magnetic Decoupler, Power Supply and Power Cord

MK395VM Vertical Mount Detacher, Vertical Bracket Kit, Power Supply and Power Cord

MK395VWD Vertical Mount Detacher with Magnetic Decoupler

0352-0034-01 Optional Magnetic Decoupler-Flush Mount

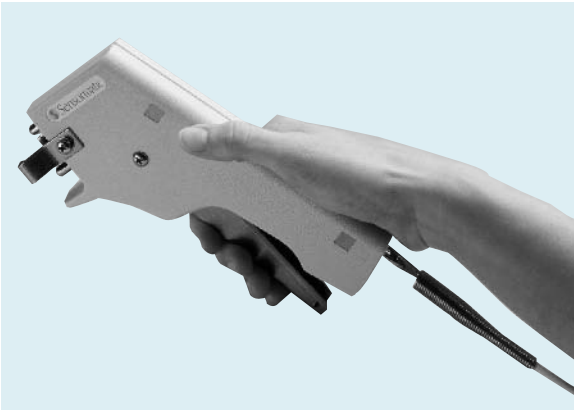
0352-0035-01 Vertical Bracket

0352-0036-01 Optional Magnetic Decoupler-Desk Top

0352-0084-01 Retro Kit for MK190/200

0352-0084-02 Retro Kit for MK90/91

MK75I Hand Detacher



DESCRIPTION

The MK75I Hand Detacher manually removes Gator type hard tags (i.e. Ultra*Gator and MicroGator) from merchandise and is an excellent backup to the MK91 Power Detacher. The detacher includes a lanyard to secure it to the Point-Of-Sale. The detacher contains a concealed label that will set off Ultra•Max systems if someone attempts to remove it from the store.

DIMENSIONS

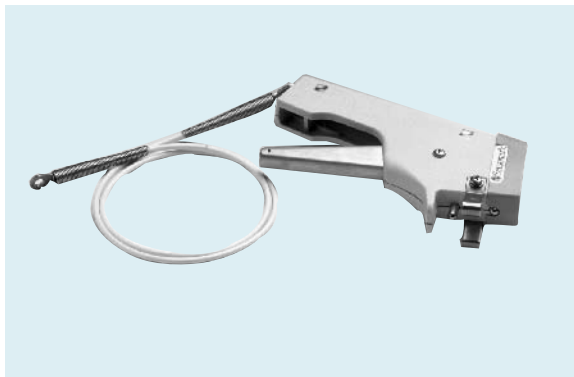
Height: Approx. 7 in. (18cm)

Weight: Approx. 0.9 lbs (410 grams)

PRODUCT CODE

MK75I

MK75IZA Hand Detacher with Boot Deactivator



DESCRIPTION

The MK75IZA Hand Detacher is the MK75I Hand Detacher with a boot deactivator attached to the top. The combo unit allows users to detach Ultra*Gator and MicroGator hard tags and deactivate Ultra•Max labels by pressing the boot against the label. The detacher contains a concealed label that will set off Ultra•Max systems if someone attempts to remove it from the store.

DIMENSIONS

(Boot Deactivator only)

2.7 in. x 1.2 in. x .84 in. (69.80mm x 30.10mm x 21.40mm)

PRODUCT CODE*

MK75IZA

*not available in Europe

MK91 Power Detacher



DESCRIPTION

The MK91-XP Power Detacher is a table top, AC powered detacher used to remove Ultra*Gator and MicroGator hard tags from merchandise. The unit includes a key lock to prevent unauthorized use. Transformer included. The detacher contains a concealed label that will set off Ultra•Max systems if someone attempts to remove it from the store.

DIMENSIONS

7.5in. x 4.0in. x 4.5in. (19cm x 10cm x 11cm)

Weight: 5.5 lbs.

PRODUCT CODE

MK91- Power Detacher

(U.S.) MK91

(Europe) MK91-E

AMD-1000 Detacher



DESCRIPTION

The AMD-1000 detacher decouples magnetic clutch-type hard tags. The unit can be mounted on the counter top or recessed in the counter. The detacher comes with two different covers that enable it to operate with a wide variety of EAS hard tags and benefit denial products (choice of cover must be made at time of installation). Features include a security lock to prevent unauthorized use. Does not require Electrical power. The AMD-1000 detacher ships with two covers: one for newer clutch tags and the other for older tags and benefit denial products.

DIMENSIONS

Traditional cover (for benefit denial, MicroLock)

(HxDia.): 41.9 x 80.0 mm (1.65 x 3.15 in.)

Weight: 181 g (6.4 oz.)

Non-traditional cover (eTag & Ultra Lite)

(HxDia.): 50.8 x 80.0 mm (1.99 x 3.15 in.)

Weight: 188 g (6.6 oz.)

PRODUCT CODES

MKD31-B Detacher only

MKD31-BL: Detacher with lock

MKDLOCK T-bar lock

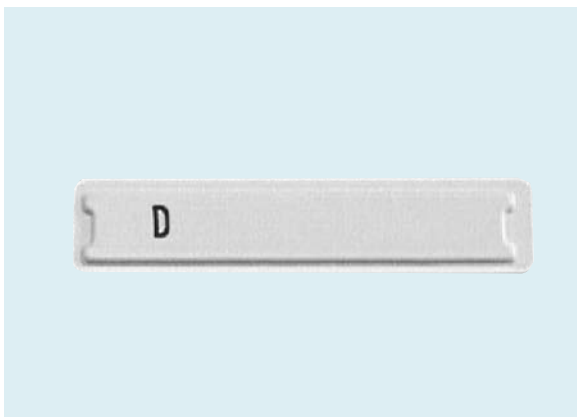
Labels

Sensormatic 58 kHz Ultra•Max labels are designed and manufactured using best-in-class practices. They provide the finest in detection and deactivation characteristics and are available in both sheet and roll formats and for specialty applications to suit many retail and source tagging market needs. Sensormatic labels include:

- Small footprint
- Excellent detection and deactivation performance
- Source tagging and Retail tagging capability
- High defeat resistance
- Reliable attachment to products
- Sheet and roll formats
- Variety of appearances (white, bar code, black)
- Unlimited activation/deactivation cycles

IMPORTANT NOTE: Information subject to change without notice. Not all products in the catalog are available worldwide. Consult your local price book for availability.

Ultra•Strip® III



DESCRIPTION

The Ultra•Strip III is a narrow label with two resonators and a high performance bias enabling the highest detection and deactivation performance. The label is compatible with all Ultra•Max detection and deactivation devices. Ultra•Strip III is available in white, barcode or black, and in sheet and roll formats.

DIMENSIONS

Sheet Labels

(LxWxD): 45.21 x 10.67 x 1.89 mm (1.78 x 0.42 x 0.074 in.)

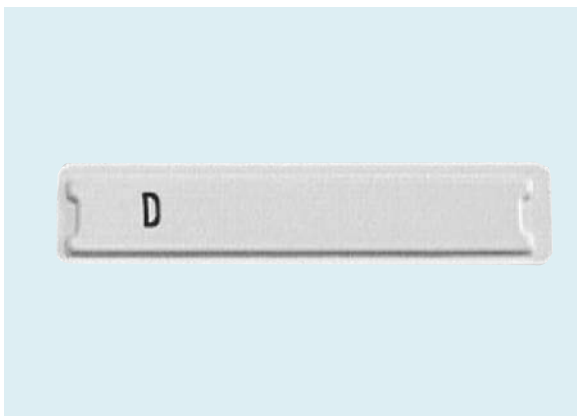
Roll Labels

(LxWxD): 44.6 x 10.16 x 1.73 mm (1.76 x 0.40 x 0.068 in.)

PRODUCT CODES

Sheet Format	Product Code	Mode of Application	Case QTY	Case Weight
White	ZLDRS1	Hand	5,000	2.76kg (6.07 lbs)
Barcode	ZLDRS2	Hand	5,000	2.76kg (6.07 lbs)
Black	ZLDRS5	Hand	5,000	2.76kg (6.07 lbs)
Roll Format	Product Code	Mode of Application	Roll Qty. / Case Qty.	Case Weight
White	ZLDR1K71	Hand or table top	1,700 / 8,500	5.37 kg (11.82 lbs.)
White	ZLDR7K51	Automatic	7,500 / 30,000	17.77 kg (39.18 lbs.)
Barcode	ZLDR1K72	Hand or table top	1,700 / 8,500	5.37 kg (11.82 lbs.)
Black	ZLDR1K75	Hand or table top	1,700 / 8,500	5.37 kg (11.82 lbs.)
Black	ZLDR7K55	Automatic	7,500 / 30,000	17.77 kg (39.18 lbs.)

Ultra•Strip® III Inactive



DESCRIPTION

The Ultra•Strip III Inactive label contains two resonators and a high performance bias enabling the highest detection and deactivation performance. The label is inactive at the time of application, then activated on products designated for Ultra•Max equipped stores. The label provides the highest detection and deactivation performance when properly activated with an approved device. The label is available for automatic application only.

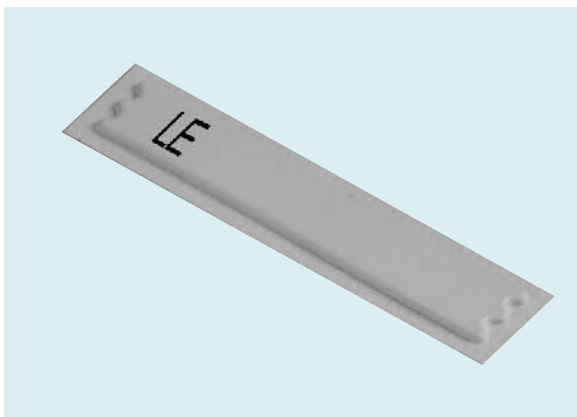
DIMENSIONS

(LxWxD): 44.6 x 10.15 x 1.73 mm (1.76 x 0.40 x 0.068 in.)

PRODUCT CODES

Roll Format	Product Code	Mode of Application	Roll Qty. / Case Qty.	Case Weight
White	ZLINACT7K51	Automatic	7,500 / 30,000	17.77 kg (39.18 lbs.)

Ultra•Strip® II Narrow



DESCRIPTION

The Ultra•Strip II Narrow is a narrow label with a single resonator and a high performance bias that provides detection performance slightly less than the Ultra•Strip III label and the highest deactivation performance. The label is compatible with all Ultra•Max detectors and deactivators devices, but should not be used with the ZK151 Contact Pad or Scanner Plates. Ultra•Strip II Narrow is available in white, bar code, or black, and sheet and roll formats.

DIMENSIONS

Sheet Labels

(LxWxD): 45.2 x 10.67 x 1.89 mm (1.78 x 0.42 x 0.074 in.)

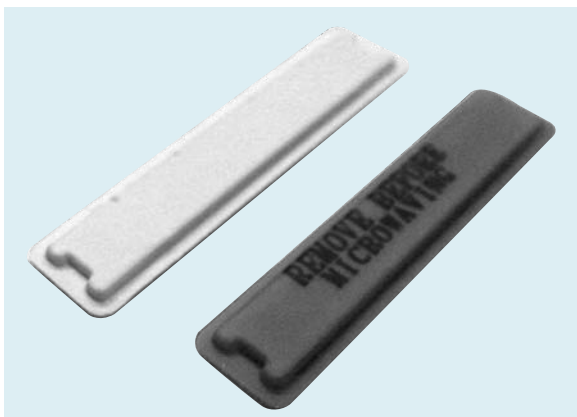
Roll Labels

(LxWxD): 44.6 x 10.16 x 1.32 mm (1.76 x 0.40 x 0.052 in.)

PRODUCT CODES

Sheet Format	Product Code	Mode of Application	Case QTY	Case Weight
White	ZLLFNSLE1	Hand	5,000	2.76 kg (6.07 lbs.)
Barcode	ZLLFNSLE2	Hand	5,000	2.76 kg (6.07 lbs.)
Black	ZLLFNSLE5	Hand	5,000	2.76 kg (6.07 lbs.)
Roll Format	Product Code	Mode of Application	Roll Qty. / Case Qty.	Case Weight
White	ZLNRLE2K1	Hand or table top	2,000 / 10,000	5.37 kg (11.82 lbs.)
White	ZLNRLE85K1	Automatic	8,500 / 34,000	17.77 kg (39.18 lbs.)
Black	ZLNRLE2K5	Hand or table top	2,000 / 10,000	5.37 kg (11.82 lbs.)

Ultra•Strip® III Microwavable



DESCRIPTION

The Ultra•Strip III Microwavable label is designed to protect meat products. The white version of the label is integrated into meat soaker pads and is not visible to consumers. The red with text version is typically applied on meat packaging. The label must be appropriately applied on meat weighing at least 227 grams (0.5 lbs.) or greater to be microwavable. The Ultra•Strip III Microwavable contains two resonators and a high performance bias enabling the highest detection and deactivation performance.

DIMENSIONS

(LxWxD) 44.60 x 10.16 x 1.83 mm (1.76 x 0.4 x 0.072 in.)

PRODUCT CODES

Roll Format	Product Code	Mode of Application	Roll Qty. / Case Qty.	Case Weight
Red with text warning	ZLDRM1K43	Hand or table top*	1,400 / 7,000	25.37 kg (11.82 lbs.)
White, no printing	ZLDRM7K3	Automatic	7,000 / 28,000	17.77 kg (39.18 lbs.)

*Compatible with a special applicator available from the Hobart Corporation.

Ultra•Strip® III Capsule



DESCRIPTION

The Ultra•Strip III Capsule label is an Ultra•Strip III label inside a sealed, overwrapped package. The label is designed for source tagging vitamins, dietary supplements, and other food items. A precautionary warning (in English) warns against ingesting the label. The label exhibits the same high detection and deactivation characteristics as all Ultra•Strip III labels. The Capsule label is approved by the U.S. Federal Food and Drug Administration for direct food contact (label must be applied in an approved FDA environment). The label is available in both a bandoleer and individual format.

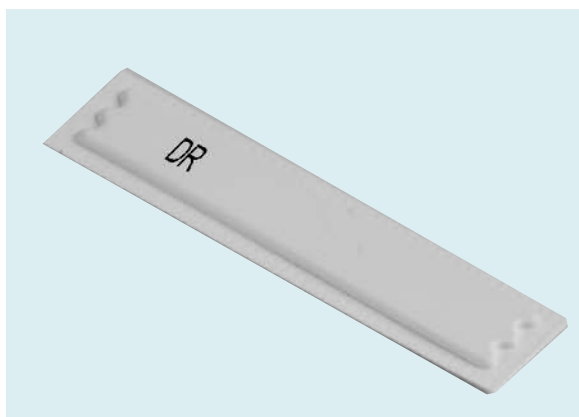
DIMENSIONS

Overwrap (HxWxD): 60 x 14 x 4 mm (2.36 x 0.55 x 0.157 in.)

PRODUCT CODES

Format	Product Code	Mode of Application	Case Qty	Case Weight
Bandoleer	ZLDRCAP	Automatic	10,000	10.66 kg (23.5 lbs.)
Individual	ZLDRICAP	Hand	5,000	2.8 kg (6.2 lbs.)

Ultra•Strip® III Low Profile



DESCRIPTION

The Ultra•Strip III Low Profile label is a narrow label with two resonators and a high performance bias enabling the highest detection and deactivation performance. The label is designed for placement inside a CD jewel case or other applications with height restrictions. The label must be applied only to rigid surfaces due to its reduced cavity height. The label is available in both low tack and regular tack versions. Low tack labels can be removed after purchase. The label is available for automatic application only.

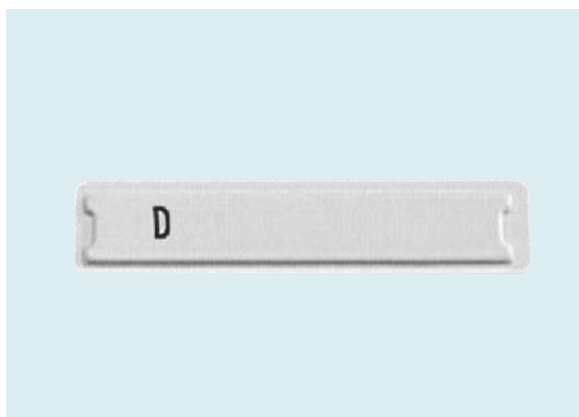
DIMENSIONS

(LxWxD): 44.6 x 10.16 x 1.2 mm (1.76 x 0.4 x 0.047 in.)

PRODUCT CODES

Roll Format	Product Code	Mode of Application	Roll Qty. / Case Qty.	Case Weight
Regular tack	ZLDR9K1	Automatic	9,000 / 36,000	18.23 kg (40.2 lbs.)

Ultra•Strip® III Low Profile Inactive



DESCRIPTION

The Ultra•Strip III Low Profile Inactive label is designed for placement inside a CD case where height restrictions are a limiting factor. The source-tagging label must be placed on a rigid substrate due to its reduced cavity height. The label is inactive at the time of application, then activated on products designated for Ultra•Max equipped stores. The label provides the highest detection and deactivation performance when properly activated with an approved device. Available for automatic application only.

DIMENSIONS

(LxWxD) 44.6 x 10.16 x 1.2 mm (1.76 x 0.4 x 0.047 in.)

PRODUCT CODES

Roll Format	Product Code	Mode of Application	Roll Qty. / Case Qty.	Case Weight
White	ZLINCTLT9K1	Automatic	9,000 / 36,000	18.23 kg (40.2 lbs.)

Ultra•Strip® III Insertable



DESCRIPTION

The Ultra•Strip III Insertable label is released to the European market only. It is designed to be manually inserted into compact disks, perfumery products, and other plastic-wrapped boxes. When used to protect CDs, the label is inserted into CD jewel cases through the narrow slot on the side of the jewel box. The label exhibits the same high detection and deactivation characteristics as all Ultra•Strip III labels.

NOTE: The Insertable label should not be inserted into materials appealing to children.

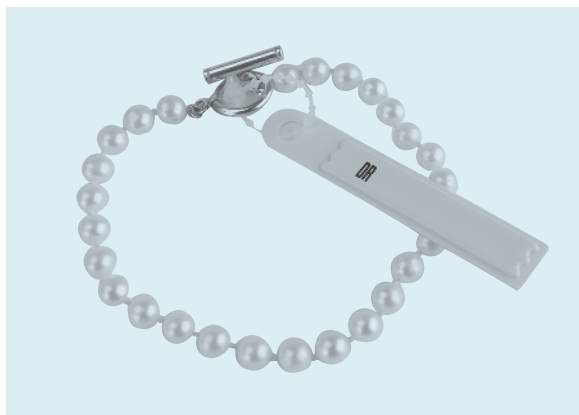
DIMENSIONS

(LxWxD): 50 x 9.25 x 2.1 mm (1.97 x 0.36 x 0.082 in.)

PRODUCT CODES

Individual Format	Product Code	Mode of Application	Case QTY	Case Weight
Barcode	ZLDRCI5K2	Hand	5,000	3.56 kg (7.85 lbs.)

Ultra•Strip® III Hang Tag



DESCRIPTION

The Ultra•Strip® III Hang Tag is an Ultra•Max Acousto-Magnetic label designed to protect accessory items from theft. This product can be applied at store level, in a distribution center or source tagged by the manufacturer. The Ultra•Strip® III Hang Tag was designed to be applied directly to a product using a zip tie by either the retailer or manufacturer. The label consists of a standard Ultra•Strip III Label with a substrate extension beyond one end of the label. The substrate extension contains a die-cut hole that allows the product to be zip tied or string attached to such merchandise as jewelry, accessories, small leather goods, soft home items, sunglasses, etc... The Ultra•Strip III Hang Tag label is compatible with all Ultra•Max detection and deactivation devices.

DIMENSIONS

(LxWxD): 58mm \pm 0.5mm (2.28" \pm 0.020") x 10mm \pm 0.5mm (0.394" \pm 0.020") x Maximum 2.0mm (.078")

PRODUCT CODES

Roll Format	Product Code	Mode of Application	Roll Qty. / Case Qty.	Case Weight
White	ZLDRHT1	Hand	1000	.84kg (1.84 lbs.)

Ultra•Strip® III Book Label



DESCRIPTION

The Ultra•Strip® III Book Label has a special ultra low-tack adhesive designed to protect books without damaging pages or falling out when a book is opened. The label performs to the highest Ultra•Max detection and deactivation standards.

DIMENSIONS

(LxWxD): 45.21mm \pm 0.5mm x 10.67mm \pm 0.5mm x Maximum 2.00mm (1.78" \pm 0.020" x 0.420" \pm 0.020" x .079")

PRODUCT CODES

Roll Format	Product Code	Mode of Application	Roll Qty. / Case Qty.	Case Weight
White	ZLDRSLT2	Hand	5000	2.76kg (6.07 lbs.)

Ultra-Strip® III Individual Label



DESCRIPTION

The Ultra-Strip® III Individual Label is designed for permanent placement either inside a cavity within a product or within a custom-designed reusable device. The adhesive-free quality of this label allows it to be inserted into the cavity without adhesive interference. Due to this label's usage, contact deactivation is not recommended. NOTE: Ultra-Strip III Individual labels inserted into products must be secured well enough to remain inside the product for the life of the product.

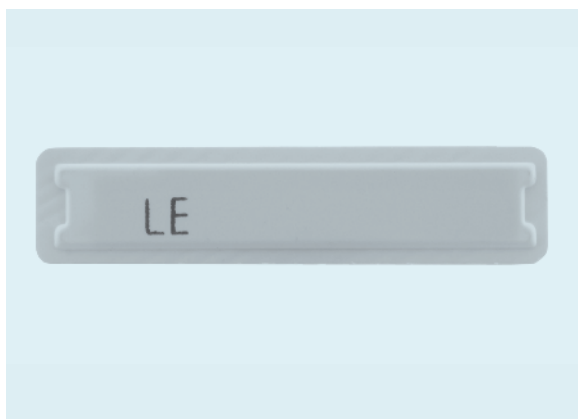
DIMENSIONS

(LxWxD): 45.21mm \pm 0.5mm x 10.67mm \pm 0.5mm x Maximum 1.89mm (1.78" \pm 0.020" x 0.420" \pm 0.020" x 0.074")

PRODUCT CODES

Roll Format	Product Code	Mode of Application	Roll Qty. / Case Qty.	Case Weight
White	ZLDRSING1	Hand	5000	2.76kg (6.07 lbs.)

Ultra-Strip® II Reduced Cavity Height



DESCRIPTION

The Ultra-Strip® II Reduced Cavity Height Label was designed to provide concealed, source tagged protection for wine and spirits. It is intended to be applied to bottles then covered by the manufacturer's paper or plastic primary information label at the point of manufacture, or at distribution centers. The label's thinner profile minimizes its visual impact on the product. Due to this label's extreme pliability, it must be applied only to rigid surfaces, and is available in source tagging rolls for automatic, high-speed application.

DIMENSIONS

(LxWxD): 44.6mm \pm 0.15mm x 10.16mm \pm 0.15mm x Maximum 1.12mm (1.76" \pm .006" x 0.40" \pm 0.006" x 0.044")

PRODUCT CODES

Roll Format	Product Code	Mode of Application	Roll Qty. / Case Qty.	Case Weight
White	ZLNRLE12K1	Automatic	48,000	22.7kg (50 lbs.)

Deactivators

Sensormatic deactivators are available in two basic styles: distance and contact. Distance deactivators emit a field that will deactivate labels several inches above the surface of the unit. Contact deactivators require the label to make contact with the surface of the pad. Deactivators can be powered or non-powered, and some are magnetic media safe for use with pre-recorded audio tapes, video tapes, etc. Activators, which allow you to re-activate labels, are especially useful in the video rental market, allowing retailers to re-activate labels on returned merchandise. The benefits of Sensormatic deactivators include:

- Ergonomic, easy to use
- Reliable deactivation with minimal impact on speed of checkout
- Wide selection of deactivator types, including magnetic media safe models/settings
- Variety of installation options

IMPORTANT NOTE: Information subject to change without notice. Not all products in the catalog are available worldwide. Consult your local price book for availability.

ScanMax® Pro Controller



DESCRIPTION

The ScanMax Pro Controller controls and boosts deactivation performance in all ScanMax deactivators, which include PowerPad®, SlimPad™, Compact Pad™, Low Profile Pad, ScanMax IS, HS, NS, NS2 and IP deactivators (all identified with "Pro" after their names). ScanMax Pro first detects labels, then deactivates them. With the ScanMax Pro Controller, labels can be deactivated at up to two per second. This speed accommodates high throughput environments such as supermarkets, hypermarkets, and high volume retail stores.

The system also automatically adjusts to changes in the electronic environment, which helps preserve optimal performance. The Controller's smaller size requires minimal space, while its vertical, tabletop, and under-counter mounting options maximize installation flexibility.

FEATURES

- ScanMax Pro antennas incorporate flash memory to store the Controller's settings. This feature enables the Controller to automatically detect the particular type of ScanMax Pro antenna connected and, along with the other self-adjusting and installation features, eliminate the need to configure the Controller via laptop computer in most cases.
- The Controller contains a reset button and indicator lights that allow contractors to set the deactivator antenna for either Ultra•Strip II or Ultra•Strip III labels and to change from normal deactivation to magnetic media safe.
- The Controller offers four ports that enable advanced capabilities such as: POS/scanner integration (software required), peripheral devices (synchronization units), advanced support via laptop, and remote alarm module connection.

MECHANICAL/FUNCTIONAL

ScanMax Pro Controller

- HxWxD: 10.1 x 26.2 x 22 cm (4.0 x 10.3 x 8.7 in.)
- Weight: 2.5 kg (5.5 lbs.)

ELECTRICAL POWER

- Power Rating: 100-120 / 200-240 Vac, 1A @ 50-60Hz
- Power Consumption: Typical: 10W @ 120V, 15W at 240V
- Max: 50W @ 120V and 240V
- Operating Frequency: 58 kHz (±200 Hz)
- Operating Temperature: 0 to 40 °C (32-104 °F)
- Controller EMC: 47 CFR Part 15
- RSS 210, ENS 300 330, EN 301489
- Controller Safety: UL60950, CSA C22.2 No. 60 950, EN 60 950

Product Codes

- ZESMPRO: ScanMax Pro Controller with power cord
- ZBSMPRO: ScanMax Pro Controller
- ZBSMP-RS: ScanMax NS Pro System for the NCR Bi-optic scanner. Includes deactivation antenna and Controller
- ZBSMP-RS2: ScanMax NS2 Pro System. Includes deactivation antenna and ScanMax Pro Controller
- ZBSMP-MS: ScanMax IS Pro System for the Magellan 9500 scanner. Includes antenna and ScanMax Pro Controller.
- ZBSMP-PW: PowerPad Pro system, including deactivator, controller, remote alarm module, power cord
- ZBSMP-SL: SlimPad Pro system, including deactivator, controller, indicator, power cord
- ZBSMP-CM: Compact Pad table top system, including deactivator, controller, remote alarm module, power cord
- ZBSMP-CM-F: Compact Pad flush mount system, including deactivator, controller, remote alarm module, power cord
- ZBSMP-LW: Low Profile Pad system, including deactivator, controller, remote alarm module, power cord
- ZBSMP-HR: ScanMax HS Pro system with deactivator antenna, Controller, remote alarm module

ScanMax® Pro Dual Antenna Controller



DESCRIPTION

The ScanMax Pro Dual Antenna Controller provides many of the same workings of the ScanMax Pro controller, but now offers the ability to drive any two ScanMax Pro Antennas with just one controller. This product is ideally suited for retailers that employ tandem or back-to-back checkout configurations. Each antenna can be spaced up to 6.1 meters (20') away from the controller with an optional 3 meter (10') cable. The ScanMax Pro Dual Antenna Controller is easy to install, reliable and provides an attractive cost-effective solution to retailers with multiple-aisle configurations.

FEATURES

- The ScanMax Pro Dual Antenna Controller has the ability to drive any two ScanMax Pro antennas while allowing each to independently detect and deactivate Ultra•Max anti-theft labels.
- With the ScanMax Pro Dual Antenna Controller, labels can be deactivated up to three per second.
- The system automatically adjusts to changes in the electronic environment during installation.
- The controller's small size requires minimal space, while its vertical, tabletop, and under-counter mounting options provide installation flexibility.
- The Controller contains a reset button and indicator lights that allow contractors to set the deactivator antenna for either Ultra•Strip II or Ultra•Strip III labels and to change from normal deactivation to magnetic media safe.
- The Controller offers four ports that enable advanced capabilities such as: POS/scanner integration (software required), peripheral devices (synchronization units), advanced support via laptop, and remote alarm module connection.

MECHANICAL/FUNCTIONAL

ScanMax Pro Dual Antenna Controller

- HxWxD: 10.1 x 26.2 x 22 cm (4.0 x 10.3 x 8.7 in.)
- Weight: 2.5 kg (5.5 lbs.)

ELECTRICAL POWER

- Power Rating: 100-120 / 200-240 Vac, 1A @ 50-60Hz
- Power Consumption: Typical: 10W @ 120V, 15W at 240V
- Max: 50W @ 120V and 240V
- Operating Frequency: 58 kHz (±200 Hz)
- Operating Temperature: 0 to 40 C (32 - 104F)
- Controller EMC: 47 CFR Part 15
- RSS 210, ENS 300 330, EN 301489
- Controller Safety: UL60950, CSA C22.2 No. 60 950, EN 60 950

Product Codes (Europe)

- ZBAMB9020 - Controller only
- ZB9020CP-TT - Table top Compact Pad Pro system including two deactivators, controller, two remote alarm modules, power cord
- ZB9020CP-FM - Flush mount Compact Pad Pro system, including two deactivators, controller, two remote alarm modules, power cord
- ZB9020CP-VM - Vertical mount Compact Pad Pro system, including two deactivators, controller, two remote alarm modules, power cord
- ZB9020PP-FM - Flush mount PowerPad Pro system includes two deactivators, controller, two remote alarm modules, power cord
- ZB9020PP-UC - Under-the-counter mount PowerPad Pro system includes two deactivators, controller, two remote alarm modules, power cord
- ZB9020SP-UC - Under-the-counter SlimPad Pro system includes two deactivators, controller, two remote alarm modules, power cord
- ZB9020SP-FM - Flush mount SlimPad Pro system includes two deactivators, controller, two remote alarm modules, power cord
- ZBAMB9020-LP - Conveyor mount Low Profile Pad Pro system includes two deactivators, controller, two remote alarm modules, power cord
- ZBAMB9020-LP - Under-the-counter Low Profile Pad Pro system includes two deactivators, controller, two remote alarm modules, power cord

Product Codes (U.S.)

- ZEAMB9020 - System including controller and power cord
- ZBSMP-B1 - OPTIONAL Wall / under-the-counter install kit
- 0352-0191-01 - OPTIONAL extension cable kit
- ZBAMB9020-CM - Table top Compact Pad Pro system including two antennas, controller, two remote alarm modules, power cord
- ZBAMB9020-CM-F - Flush mount Compact Pad Pro system, including two antennas, controller, two remote alarm module, power cord
- ZBAMB9020-PW - PowerPad Pro system including two antennas, controller, two remote alarm modules, power cord
- ZBAMB9020-SL - SlimPad Pro system including two antennas, controller, two remote alarm modules, power cord

ScanMax® PowerPad® Pro



DESCRIPTION

The PowerPad Pro is an Ultra•Max distance deactivator offering superb label deactivation performance, reliability, and throughput speed. It features flexible mounting options and a magnetic media safe setting to safeguard pre-recorded audio and video tapes. PowerPad Pro deactivates labels up to 17.5 cm (7 in.) above the pad in the normal mode and up to 7.6 cm (3 in.) in magnetic media mode. Labels can be deactivated at a throughput rate of up to 203-254 cm (80-100 in.) per second.

FEATURES

- Excellent deactivation performance up to a maximum of 17.5 cm (7 in.).
- Small footprint saves space in the checkstand.
- Mounting options allow tabletop, flush, under-the-counter, or end-of-the-counter mounting.
- Magnetic media safe setting safeguards pre-recorded video cassettes and audio tapes.
- Compatible with the ScanMax Pro Controller.
- Optional audio/visual confirmation of deactivation.
- Label detection rate of 1 per second for 5 minutes.

Mechanical

PowerPad Pro Antenna:

- (LxWxD) 39.4 17 x 5.6 cm (15.5 x 6.7 x 2.2 in.)
- Weight: 9.6 kg (21 lb)
- Cable: 2.9 m (9.7 ft.)

ScanMax Pro Controller:

- (LxWxD) 10.1 x 26.2 x 22 cm (4 x 10.3 x 8.7 in.)
- Weight: 2.5 kg (5.5 lbs.)

ELECTRICAL POWER

- Primary Input: 100-240Vac, 50/60 hz
- Operating Temperature: 0° C to 40° C (32° F to 104° F)
- Relative Humidity: 90% non-condensing

PowerPad complies with all applicable regulations for safety and emissions.

OPTIONAL REMOTE ALARM MODULE

The Remote Alarm Module provides audible and visual indication of deactivation. This is an optional device for the PowerPad Pro deactivator (PowerPad Pro also has built-in indicators). The unit contains a key switch for turning the deactivator antenna on/off.



ALARM MODULE DIMENSIONS

Alarm Module Height: 6 cm (2.4 in.)
 Alarm Module Width: 8 cm (3.25 in.)
 Alarm Module Depth: 3.2 cm (1.3 in.)

PRODUCT CODES

- ZBSMPPP: PowerPad Pro antenna
- ZESMPRO: ScanMax Pro Controller
- ZBAMB9020: ScanMax Pro Dual Antenna Controller (European)
- ZEAMB9020: Scan Max Pro Dual Antenna Controller (U.S.)
- ZPSTP-RA Remote Alarm Module

ScanMax® SlimPad™ Pro



DESCRIPTION

The SlimPad Pro is an Ultra•Max distance deactivator designed to deactivate Ultra•Strip labels. SlimPad Pro is especially well suited where space is limited. It can be flush or undercounter mounted downstream from the price scanner and provides reliable distance deactivation up to 15 cm (6 in) above the surface of the pad. SlimPad Pro is not magnetic media safe. The deactivator antenna is compatible with the ScanMax Pro Controller.

FEATURES

- Small, slim design with high-impact plastic enclosure.
- Deactivation up to 15 cm (6 in).
- High throughput.
- Visual indicator for power and deactivation.
- Flush, under-the-counter or cantilever mounting.
- Compatible with remote alarm module.
- Not magnetic-media safe.
- Label detection rate up to 200 cm/sec. (80 in./sec.).

MECHANICAL/FUNCTIONAL

SlimPad Pro antenna

- (LxWxD) 33 x 11.4 x 8.9 cm (13 x 4.5 x 3.5 in.)
- Weight (w/cable): 6.45kg (14.25lbs)
- Cable: 2.9 m (9.7 ft.)

ScanMax Pro Controller:

- (LxWxD) 10.1 x 26.2 x 22 cm (4 x 10.3 x 8.7 in.)
- Weight: 2.5 kg (5.5 lbs.)

ELECTRICAL POWER

- Voltage: 100-240 Vac, 50 or 60 hz ±
- Operating Temperature: 0° C to +50° C
- Non-Operating Temperature: -40° C to +70° C
- Humidity: 90% non-condensing

SlimPad Pro and the power pack comply with all applicable International regulations for safety and emissions.

OPTIONAL REMOTE ALARM MODULE

The Remote Alarm Module provides audible and visual indication of deactivation. This is an optional device for the SlimPad Pro deactivator (SlimPad Pro also has a built-in visual indicator). The unit contains a key switch for turning the deactivator antenna on/off.



ALARM MODULE DIMENSIONS

Alarm Module Height: 6 cm (2.4 in.)

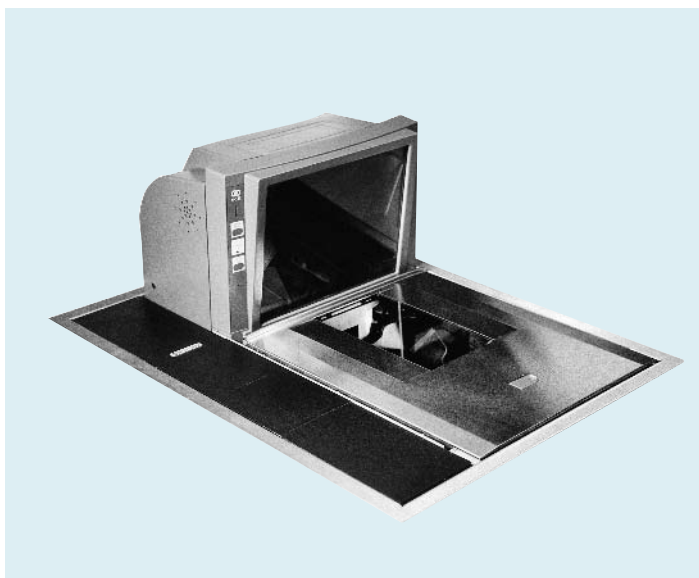
Alarm Module Width: 8 cm (3.25 in.)

Alarm Module Depth: 3.2 cm (1.3 in.)

Product Codes

- ZBSMP-SL: PowerPad Pro antenna
- ZESMPRO: ScanMax Pro Controller
- ZBAMB9020: ScanMax Pro Dual Antenna Controller (European)
- ZEAMB9020: Scan Max Pro Dual Antenna Controller (U.S.)
- ZPSTP-RA: Remote Alarm Module

ScanMax® IP Pro



DESCRIPTION

The ScanMax IP Pro is an Ultra•Max distance deactivator that installs flush against the Point Of Sale (POS) bar code scanner for seamless scan-deactivation of Ultra•Strip® anti-shoplifting labels. The deactivator is only 9.2 cm (3.6 in.) wide and can be installed next to any 51 cm (20 in.) long bar code scanner (flatbed or bi-planar). An optional stainless steel trim ring can be installed around both devices to complete a one-unit appearance. Since no physical or operational connection is made between the scanner and the deactivator, service, warranty and other issues for each device are not affected. The IP Pro is not magnetic media safe.

FEATURES

- Flush mounting next to scanner allows seamless "scan-deactivation" of EAS labels
- Small, narrow footprint saves space at the Point-Of-Sale
- Deactivation of Ultra•Strip® labels up to 15 cm (6 in.) above the pad effective for source-tagged merchandise
- High throughput rate of 60-80 in./sec. (150-200 cm/sec.) keeps checkout lines moving
- Easy to use with minimal training
- Visual confirmation of deactivation via optional remote alarm module
- Not magnetic media safe

MECHANICAL/FUNCTIONAL

ScanMax IP Pro antenna

- (LxWxD) 51 x 9.2 x 12.7 cm (20 x 3.6 x 5 in.)
- Weight: 7.25 kg (16 lbs.)

ScanMax Pro Controller:

- (LxWxD) 10.1 x 26.2 x 22 cm (4 x 10.3 x 8.7 in.)
- Weight: 2.5 kg (5.5 lbs.)

ELECTRICAL POWER

- Primary Input: 100 - 250 VAC, 50/60 Hz
- Rated Current: 2.0 A operating, 0.2 A standby
- AC Operating Phase: 0°, 120°, 180°, 240°
- Antenna Output: 1.6 ms burst
- Transmitter Current: 0.5 Apk (nominal)
- Operating Frequency: 58 kHz

ScanMax IP Pro and the controller comply with all applicable International regulations for safety and emissions.

OPTIONAL REMOTE ALARM MODULE

The Remote Alarm Module provides audible and visual indication of deactivation. The unit contains a key switch for turning the deactivator antenna on/off.



ALARM MODULE DIMENSIONS

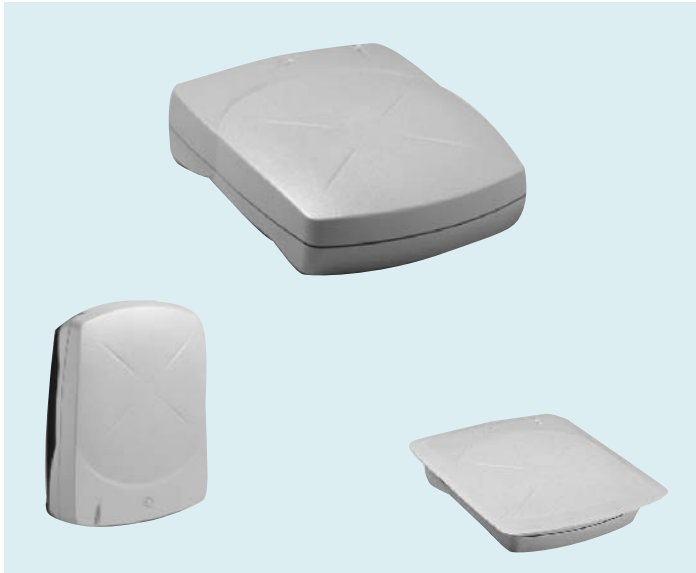
Alarm Module Height: 6 cm (2.4 in.)
 Alarm Module Width: 8 cm (3.25 in.)
 Alarm Module Depth: 3.2 cm (1.3 in.)

Product Codes*

- ZBSTPP2: ScanMax IP Pro antenna
- ZESMPRO: ScanMax Pro Controller
- ZEAMB9020: Scan Max Pro Dual Antenna Controller (U.S.)
- ZPSTP-RA: Remote Alarm Module

*not available in Europe

ScanMax® Compact Pad® Pro



DESCRIPTION

The Compact Pad Pro is an Ultra•Max® EAS label deactivator designed to fit even the smallest of checkstands or cash wraps in the food, soft goods, specialty, and general merchandise markets. It provides reliable distance deactivation up to 15 cm (6 in) above the surface of the pad and features a magnetic media safe setting to safeguard pre-recorded audio and video tapes. The Compact Pad Pro is available in both counter top (vertical or horizontal) and flush mount models. A green LED on the unit indicates power and alerts users when deactivation occurs. A remote alarm module provides audible confirmation of deactivation. The Compact Pad Pro is compatible with the ScanMax Pro Controller.

FEATURES

- Small footprint saves space at the Point-Of-Sale
- Deactivates up to 6 inches (15 cm) above the pad
- Magnetic media safe mode produces a 2-inch (5 cm) deactivation zone
- LED enables visual confirmation of deactivation
- Counter top, flush mount, and mounting brackets offer installation flexibility
- Easy to use
- Attractive design

PERFORMANCE

- Max detection rate: 1.5 m (60 in.) /sec.
- Magnetic Media Safe Mode: 5 cm (2in)

MECHANICAL/FUNCTIONAL

Counter top model:

- (LxWxD) 21 x 16 x 4 cm (8 x 6.4 x 1.6 in.)

Flush mount model

- (LxWxD) 22 x 18 x 4 cm (8.7 x 7 x 1.6 in.)
- Weight: 4.1 kg (9 lb.)

ScanMax Pro Controller:

- (LxWxD) 10.1 x 26.2 x 22 cm (4 x 10.3 x 8.7 in.)
- Weight: 2.5 kg (5.5 lbs.)

ELECTRICAL POWER

- Voltage: 100-240 Vac, 50 or 60 hz ±
- Operating Temperature: 0° C to +50° C
- Non-Operating Temperature: -40° C to +70° C
- Humidity: 90% non-condensing

OPTIONAL REMOTE ALARM MODULE

The Remote Alarm Module provides audible and visual indication of deactivation. This is an optional device. The unit contains a key switch for turning the deactivator antenna on/off.



ALARM MODULE DIMENSIONS

Alarm Module Height: 6 cm (2.4 in.)

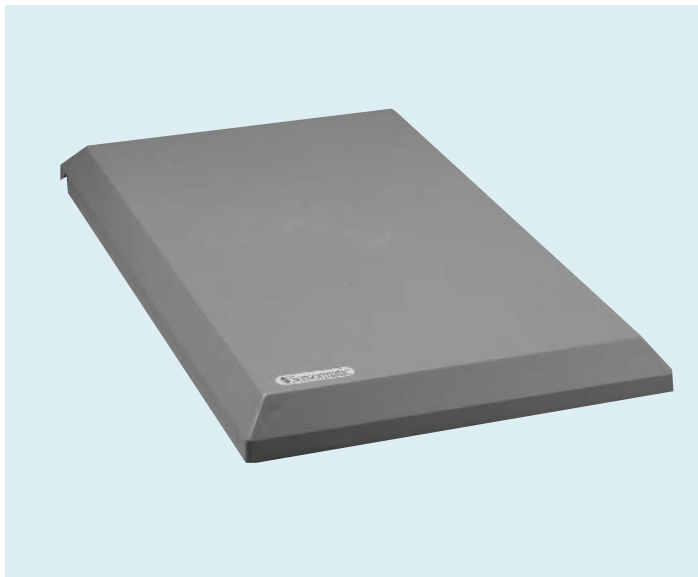
Alarm Module Width: 8 cm (3.25 in.)

Alarm Module Depth: 3.2 cm (1.3 in.)

Product Codes*

- ZBSMPCP: Compact Pad Pro antenna, tabletop model
- ZBSMPCP-F: Compact Pad Pro antenna, flush mount model
- ZESMPRO: ScanMax Pro Controller
- ZBAMB9020: ScanMax Pro Dual Antenna Controller (European)
- ZEAMB9020: Scan Max Pro Dual Antenna Controller (U.S.)
- ZPSTP-RA: Remote Alarm Module

ScanMax® Low Profile Pad Pro



DESCRIPTION

The Low Profile Pad Pro is a high-throughput Ultra•Max® EAS label deactivator designed for the food, DIY, and general merchandise markets. It can be installed in conveyors, under counters, or on counter tops to meet both retailers' needs and most checkstand designs. The unit deactivates labels up to 20 cm (8 in.) above its surface in normal operation, and 7.5 cm (3 in.) in magnetic media safe mode. A magnetic media safe mode safeguards pre-recorded audio and video cassettes. Low Profile Pad Pro's rectangular shape and narrow profile allow mounting within conveyors of various widths or in counter tops where space is a consideration. The deactivator measures can be mounted in conveyors 23 cm (9") and wider.

FEATURES

- Deactivation of Ultra•Max labels up to a maximum 20 cm (8 in.) above the pad
- Rectangular shape provides installation flexibility
- Various mounting options allow for conveyor, under counter, or counter top installations
- Magnetic media safe setting
- Compatible with the ScanMax Pro Controller
- Easy to use
- Max detection rate: 203.2 cm (80 in.) per second

MECHANICAL/FUNCTIONAL

- (LxWxD) 35 cm x 23 cm x 2.9 cm (14" x 9" x 1.1")
- Weight: 4.1 kg (9 lb.)

ScanMax Pro Controller:

- (LxWxD) 10.1 x 26.2 x 22 cm (4 x 10.3 x 8.7 in.)
- Weight: 2.5 kg (5.5 lbs.)

ELECTRICAL POWER

- Voltage: 100-240 Vac, 50 or 60 hz ±
- Operating Temperature: 0° C to +50° C
- Non-Operating Temperature: -40° C to +70° C
- Humidity: 90% non-condensing

OPTIONAL REMOTE ALARM MODULE

The Remote Alarm Module provides audible and visual indication of deactivation. This is an optional device. The unit contains a key switch for turning the deactivator antenna on/off.



ALARM MODULE DIMENSIONS

Alarm Module Height: 6 cm (2.4 in.)
 Alarm Module Width: 8 cm (3.25 in.)
 Alarm Module Depth: 3.2 cm (1.3 in.)

Product Codes

- ZBSMPLP: Low Profile Pad Pro
- ZESMPRO: ScanMax Pro Controller
- ZBAMB9020: ScanMax Pro Dual Antenna Controller (European)
- ZEAMB9020: Scan Max Pro Dual Antenna Controller (U.S.)
- ZPSTP-RA: Remote Alarm Module

ScanMax® HS Pro



DESCRIPTION

The Sensormatic ScanMax HS Pro model AMB-3050 deactivator fits inside an EAS-ready scanner/weigh scale assembly, allowing cashiers to scan bar coded merchandise and deactivate labels in one motion.

The ScanMax HS Pro is compatible with the following devices: NCR 7882/7883 scanners, PSC HS 1250 scanner, Symbol LS 5700/5800 scanners, and Mettler Toledo EAS-ready weigh scale assembly. These devices can be purchased from their respective sales representatives.

The ScanMax HS Pro will deactivate labels up to 15 cm (6 in.) above the surface of the weigh scale at a throughput speed of up to 200 cm/sec. (80 in./sec.).

FEATURES

- Embedded deactivator enables one-motion scan-deactivation
- Excellent deactivation performance
- Saves space in the checkstand
- Optional remote alarm module provides audible and visual notification of deactivation

PERFORMANCE

- Max detection rate: 200 cm/sec. (80 in./sec.)

MECHANICAL/FUNCTIONAL

- (LxWxD) 26.7 x 9.2 x 8.2 cm (10.5 x 3.6 x 3.2 in.)
- Weight: 5.1 kg (11.2 lbs.)

ScanMax Pro Controller:

- (LxWxD) 10.1 x 26.2 x 22 cm (4 x 10.3 x 8.7 in.)
- Weight: 2.5 kg (5.5 lbs.)

ELECTRICAL POWER

- Voltage: 100-240 Vac, 50 or 60 hz ±
- Operating Temperature: 0° C to +50° C
- Non-Operating Temperature: -40° C to +70° C
- Humidity: 90% non-condensing

OPTIONAL REMOTE ALARM MODULE

The Remote Alarm Module provides audible and visual indication of deactivation. This is an optional device. The unit contains a key switch for turning the deactivator antenna on/off.



ALARM MODULE DIMENSIONS

Alarm Module Height: 6 cm (2.4 in.)

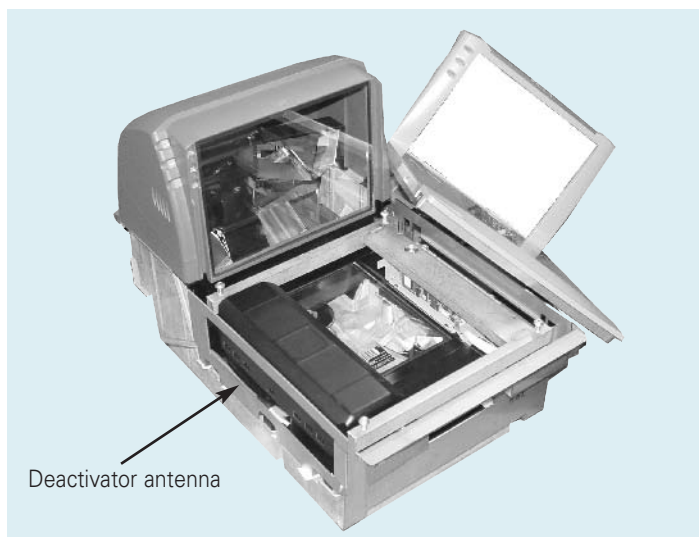
Alarm Module Width: 8 cm (3.25 in.)

Alarm Module Depth: 3.2 cm (1.3 in.)

Product Codes

- ZBSMP-HR ScanMax HS Pro system with deactivator antenna, Controller, and remote alarm module
- ZBSMPHS Deactivator antenna only
- ZESMPRO ScanMax Pro Controller with cord
- ZBAMB9020: ScanMax Pro Dual Antenna Controller (European)
- ZEAMB9020: Scan Max Pro Dual Antenna Controller (U.S.)
- ZPSTP-RA Remote Alarm Module

ScanMax® IS Pro



DESCRIPTION

The Sensormatic ScanMax IS Pro is an EAS label deactivator integrated into a PSC Magellan 9500 bi-planner Scanner. The unit provides an integrated scanner and deactivator solution that's easy to use and can help speed up the checkout process.

The ScanMax IS Pro will deactivate Ultra•Max labels up to 12.5 cm (5 in.) above the unit at a throughput rate of up to 200 cm/sec. (80 in./sec.).

The deactivator antenna operates off the ScanMax Pro Controller. The antenna can be installed downstream on either side of the scanner window to accommodate product from the right or the left.

FEATURES

- One motion scanning and deactivation
- Weigh scale compatibility
- Ability to control deactivation based on a valid barcode scan
- Audible and visual indication of deactivation
- Easy to install

MECHANICAL/FUNCTIONAL

Antenna Dimensions:

- (LxWxD) 238 x 85 x 91 mm (9.37 x 3.35 x 3.58 in.)
- Weight: 3.5 kg (7.65 lbs.)

Controller Dimensions:

- (HxWxD) 10.1 x 26.2 x 22 cm (4 x 10.3 x 8.7 in.)
- Weight: 2.5 kg (5.5 lbs.)

ELECTRICAL POWER

- Voltage: 100-120 / 200-240 Vac, 1A 50 - 60 hz
- Typical: 10W @ 120V, 15W at 240V
- Max: 50W @ 120V and 240V
- Operating Frequency: 58 kHz (± 200 Hz)
- Operating Temperature: 0° to 40°C (32° - 104°F)

CONTROLLER SAFETY

- 47 CFR, Part 15
- ENS 300 330
- ENS 301489
- ENS61000-3-2
- ENS61000-3-3

Product Codes*

- ZBSMPIS ScanMax IS Pro antenna with extension cable and interface cable to scanner
- ZBSMP-MS ScanMax IS Pro System for the Magellan 9500 scanner. Includes antenna and ScanMax Pro Controller
- ZEAMB9020: Scan Max Pro Dual Antenna Controller (U.S.)
- ZESMPRO ScanMax Pro Controller with cord
- ZPSTP-RA Remote Alarm Module

*Available in the U.S. and Canada only

ScanMax® NS Pro



DESCRIPTION

The ScanMax NS Pro is an EAS label deactivator antenna for use with the ScanMax Pro or ScanMax Pro Dual Controller. The deactivator antenna fits inside an EAS-ready NCR RealScan 7875z bar code scanner/scale assembly. The unit provides an integrated scanner and deactivator solution that's easy to use and can help speed up the checkout process. The deactivator can deactivate labels up to 12 cm (5") above the surface of the scanner at a throughput speed of up to 200 cm/sec. (80"/sec.).

FEATURES

- The deactivator antenna fits adjacent to the scanner window on the downstream side. It will automatically deactivate the label as the cashier scans the barcode and passes the tagged item over the deactivator antenna.
- The ScanMax NS Pro will deactivate both source tagged and retailer tagged merchandise.
- The ScanMax NS Pro can be used in high throughput front-end applications.
- The deactivator can deactivate labels up to 12 cm (5") above the surface of the scanner at a throughput speed of up to 200 cm/sec. (80"/sec.).

MECHANICAL/FUNCTIONAL

ScanMax NS Pro antenna

- LxWxD: 295 x 90 x 53 mm (11.6 x 3.5 x 2.1 in.)
- Weight: 4.64 kg (10.25 lbs.)

ScanMax Pro Controller

- HxWxD: 10.1 x 26.2 x 22 cm (4.0 x 10.3 x 8.7 in.)
- Weight: 2.5 kg (5.5 lbs.)

ScanMax Pro Dual Antenna Controller

- (HxWxD): 10.1 x 26.2 x 22.1 cm (4.0 x 10.3 x 8.7 in.).
- Weight: 2.5 kg (5.5 lbs.)

ELECTRICAL POWER

- Power Rating: 100-120 / 200-240 Vac, 1A @ 50-60Hz
- Power Consumption: Typical: 10W @ 120V, 15W at 240V
- Max: 50W @ 120V and 240V
- Operating Frequency: 58 kHz (± 200 Hz)
- Operating Temperature: 0° to 40° C (32° - 104° F)

ScanMax NS Pro and the controller comply with all applicable International regulation for safety and emissions.

OPTIONAL REMOTE ALARM

The Remote Alarm Module provides audible and visual indication of deactivation. The unit contains a key switch for turning the deactivator antenna on/off.

ALARM MODULE DIMENSIONS

Alarm Module Height: 6 cm (2.4 in.)
 Alarm Module Width: 8 cm (3.25 in.)
 Alarm Module Depth: 3.2 cm (1.3 in.)

Product Codes

- ZBSMPNS: ScanMax NS Pro deactivation antenna
- ZESMPRO: ScanMax Pro Controller
- ZBAMB9020: ScanMax Pro Dual Antenna Controller (Europe)
- ZEAMB9020: ScanMax Pro Dual Antenna Controller (U.S.)
- ZPSTP-RA: Remote Alarm Module

ScanMax® NS2 Pro



DESCRIPTION

The ScanMax NS2 Pro is an Ultra•Max® deactivator antenna that was designed to be integrated into the new NCR RealScan 7876 Z Bi-optic Scanner/Scale. The ScanMax NS2 Pro allows users to scan and deactivate both source-tagged and retailer-tagged merchandise. The deactivator can deactivate labels up to 12 cm (5") above the surface of the scanner at a throughput speed of up to 200 cm/sec. (80"/sec.).

FEATURES

- The deactivator antenna fits adjacent to the scanner window on the downstream side. It will automatically deactivate the label as the cashier scans the barcode and passes the tagged item over the deactivator antenna.
- The ScanMax NS2 Pro will deactivate both source tagged and retailer tagged merchandise.
- The ScanMax NS2 Pro can be used in high throughput front-end applications.
- The deactivator can deactivate labels up to 12 cm (5") above the surface of the scanner at a throughput speed of up to 200 cm/sec. (80"/sec.).

MECHANICAL/FUNCTIONAL

ScanMax NS2 Pro antenna

- LxWxD: 286.5 x 86.0 x 44.5 mm (11.28 x 3.39 x 1.75 in.)
- Weight: 3.5 kg (7.65 lbs.)

ScanMax Pro Controller

- HxWxD: 10.1 x 26.2 x 22 cm (4.0 x 10.3 x 8.7 in.)
- Weight: 2.5 kg (5.5 lbs.)

ScanMax Pro Dual Antenna Controller

- (HxWxD): 10.1 x 26.2 x 22.1 cm (4.0 x 10.3 x 8.7 in.).
- Weight: 2.5 kg (5.5 lbs.).

ELECTRICAL POWER

- Power Rating: 100-120 / 200-240 Vac, 1A @ 50-60Hz
- Power Consumption: Typical: 10W @ 120V, 15W at 240V
- Max: 50W @ 120V and 240V
- Operating Frequency: 58 kHz (±200 Hz)
- Operating Temperature: 0 to 40 °C (32-104 °F)

ScanMax NS2 Pro and the controller comply with all applicable International regulation for safety and emissions.

OPTIONAL REMOTE ALARM

The Remote Alarm Module provides audible and visual indication of deactivation. The unit contains a key switch for turning the deactivator antenna on/off.

ALARM MODULE DIMENSIONS

Alarm Module Height: 6 cm (2.4 in.)

Alarm Module Width: 8 cm (3.25 in.)

Alarm Module Depth: 3.2 cm (1.3 in.)

Product Codes

- ZBSMPNS2: ScanMax NS2 Pro deactivation antenna
- ZESMPRO: ScanMax Pro Controller
- ZBAMB9020: ScanMax Pro Dual Antenna Controller (Europe)
- ZEAMB9020: ScanMax Pro Dual Antenna Controller (U.S.)
- ZPSTP-RA: Remote Alarm Module

Scan-Thru® II



DESCRIPTION

Scan-Thru II is an Ultra•Max distance deactivator that sits vertically at the Point-Of-Sale (POS). It deactivates all Ultra•Strip EAS labels at a maximum distance of 8 inches (20cm). The unit features a built-in double checker to ensure label deactivation and an optional remote key switch.

The Scan-Thru II plugs into a standard electrical outlet without a separate power pack.

FEATURES

- Excellent deactivation distance.
- Higher throughput speeds.
- Plug-and-play convenience (plugs into standard electrical outlet).
- Detects and deactivates.

ELECTRICAL

- AC line input: 230V-
- AC line current: 4.5Arms (short term operation, 1 deactivation every sec.). 2.0Arms (long term avg, 1 deactivation every 12 sec.)
- Current: 5Apk (+10/-15%)
- Operating frequency: 58 kHz

MECHANICAL

Scan-Thru II Mechanical

- Height: 28.3 cm (11.1 in.)
- Width: 26.4 cm (10.4 in.)
- Top depth: 9.8 cm (3.9 in.)
- Bottom depth: 13.3 cm (5.2 in.)
- Weight: 9.5 kg (21 lbs)

REGULATORY

- Emissions: 47 CFR, Part 15, Subpart B (FCC); EN55081-1CL. B (CE) VDE 0848 (TUV)
- Immunity: EN50082-1 (CE)
- Safety: EN60950

Product Code*

ZBSCTHDE5-2 Scan-Thru II 50 Hz International

*Not available in the U.S.

AMB 2010 Value Deactivator



MECHANICAL/FUNCTIONAL

AMB-2010 Value Deactivator

- LxWxD: 21x16x4 cm (8 x 6.4 x 1.6 in.)
- Weight: 0.95 kg (2.1 lbs.)

ELECTRICAL POWER

Input Voltage: 18 Vdc, 1.7A

Separate Power Supply

Input Voltage: 100—240 Vac, 50/60 Hz

AC Line Current: 1 Arms (max.)

Output Voltage: 18 Vdc, 1.7A Listed Class 2 Certified Limited Power Source

Weight: 0.28 kg (0.6 lbs.)

EMC: 47 CFR, Part 15, RSS 210, EN300330, EN301489

EMF: VDE 0848

Safety: UL60950, EN 60 950, CE Mark

Product Codes

- ZBAMB2010T-1: Deactivator system with power cord, tabletop version.
- ZBAMB2010F-1: Deactivator system with power cord, flush mount version

DESCRIPTION

The AMB-2010 label deactivator detects and deactivates Sensormatic Ultra•Strip® EAS labels. The unit plugs into an ordinary electrical outlet and will detect active labels up to 15 cm (6") above the surface of the deactivator and will deactivate labels up to 3 inches above the surface of the unit. The tabletop unit will fit easily on most counters, while the flush mount unit can be recessed into the counter for added convenience. The tabletop unit can be mounted horizontally or vertically.

FEATURES

- A tone and an indicator light on the surface of the deactivator inform users when label detection and deactivation occur.
- The indicators provide "doublechecking" capability by alerting users to present a "missed" label to the deactivator a second time.
- The small size and mounting options of the deactivator makes the deactivator suitable for POS stations of virtually any size.
- The unit's performance provides a solution for retailers selling source tagged CDs and DVDs

FreeStyle® HD



DESCRIPTION

FreeStyle HD is a wireless, battery-operated hand held detector/deactivator for Ultra•Strip® II and Ultra•Strip III labels. The product helps retailers verify source tagging compliance, find or deactivate labels that have alarmed the system, or deactivate labels on items too large to be lifted out of a shopping cart.

DIMENSIONS

(LxWxH): 28 x 11.4 x 3.2 cm (11 x 4.5 x 1.25 in.)

Weight: 0.8 kg (28 oz.)

PRODUCT CODE

ZBHHCW FreeStyle HD, Base Charging Station, Customer Install Kit

ZBHHCW-I FreeStyle HD, Base Charging Station, Installation

Available in U.S. only.

Acousto-Link™



DESCRIPTION

Acousto-Link enables the ScanMax® EAS label deactivator after a valid bar code scan to help prevent unauthorized or accidental label deactivation at the Point-Of-Sale. The device is compatible with most scanners and requires only an audible scanner tone to operate.

DIMENSIONS

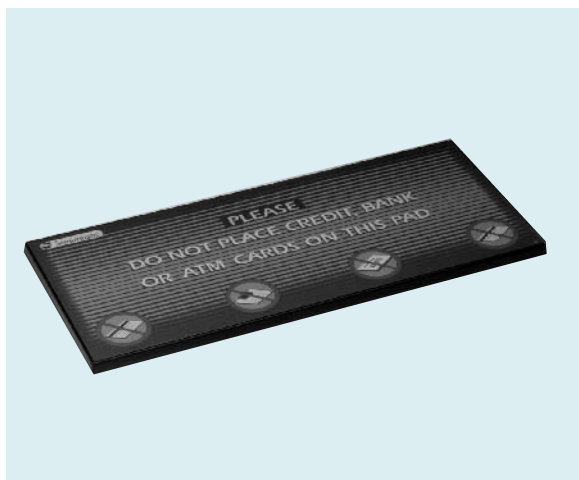
Remote Alarm Module (LxWxH): 115 x 84.5 x 63 mm (4.5 x 3.3 x 2.5 in.)

Microphone (LxWxH): 36.5 x 24 x 15 mm (1.4 x 0.9 x 0.6 in.)

PRODUCT CODE

ZPACLNK Acousto-Link

ContactPad



DESCRIPTION

The ZK252 contact pad is a low-cost, high performing contact deactivator for all Ultra•Strip labels*. Labels are deactivated by rubbing them across the surface of the non-powered pad.

*Note: Labels must make contact with the surface of the pad; for this reason the contact pad is not recommended for music retailers where source tagged CDs, DVDs, etc. are sold (use ZK151 for source tagged CDs, DVDs).

DIMENSIONS

(LxWxD): 28.6 x 12.7 x 0.7 cm (11.2 x 5 x 0.28 in.)

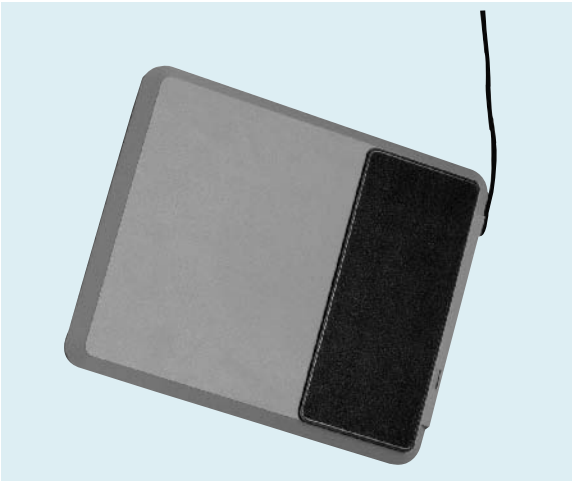
PRODUCT CODE

(U.S.) ZK252XP

(Europe) ZK252-XPE

ZK151 contact pad for source tagged CDs, DVDs

Doublechecker



DESCRIPTION

A Doublechecker is a tag & label detection pad used at the Point-Of-Sale to confirm the deactivation of labels or detect the presence of hard tags. Labels are passed over the Doublechecker after deactivation. An audible and visual alarm indicates detection of a label or tag. The Doublechecker is a powered unit. Contact Pads and the Multimedia Deactivator can be positioned on top of the pad.

DIMENSIONS

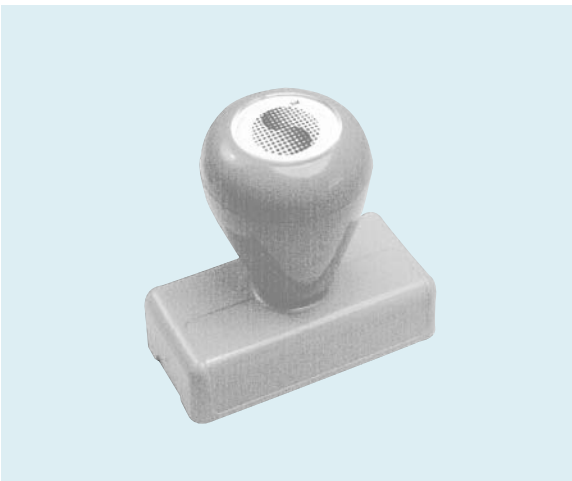
(LxWxD): 38 x 32 x 3.8 cm (15 x 12.5 x 1.5 in.)

PRODUCT CODE

(U.S.): ZB749XP Doublechecker

(Europe): ZB949XP Doublechecker

Hand Stamp



DESCRIPTION

The Hand Stamp Deactivator deactivates Ultra•Strip labels when pressed down on the label. The stamp is spring loaded and returns to a normal position after applying. It is especially useful for deactivating labels applied to large or bulky items where handling the product is difficult. Includes a lanyard.

DIMENSIONS

(LxD): 7 x 3.6 cm (2.75 x 1.4 in.)

PRODUCT CODE

ZK20-1

Boot Deactivator



DESCRIPTION

The ZK40-4HDII Boot Deactivator is a gray, plastic contact deactivator that fits over a Symbol LS4000 price gun scanner. It deactivates Ultra•Strip labels by pressing the end of the scanner against the label. The Boot Deactivator makes it easy to deactivate labels on large or bulky merchandise that cannot be lifted easily.

DIMENSIONS

(LxWxD): 4.4 x 6.4 x 3.8 cm (1.75 x 2.5 x 1.5 in.)

PRODUCT CODE

(U.S.) ZK40-4HDIIA Boot Deactivator (not magnetic media safe)

(Europe) ZK40-B

Boot Deactivator



DESCRIPTION

The ZK40-01AZ Boot Deactivator is a black, metal contact deactivator that fits over a Symbol LS2000 price gun scanner. It deactivates Ultra•Strip labels by pressing the end of the scanner against the label. The Boot Deactivator makes it easy to deactivate labels on large or bulky merchandise that cannot be easily lifted.

DIMENSIONS

(LxWxD): 4.2 x 6.6 x 1.9 cm (1.6 x 2.6 x 0.75 in.)

PRODUCT CODE

ZK40-01AZ Boot Deactivator (not recommended for magnetic media items)

Hand Wand Activator



DESCRIPTION

The Hand Wand re-activates all Ultra•Strip labels when slid over the length of the label (making contact along the way). The Wand is especially useful for large or bulky items. It allows products returned to the store to be re-merchandised. The Wand is not multimedia safe.

DIMENSIONS

(HxWxD): 5.72 x 19.7 x 3.2 cm (2.25 x 7.75 x 1.25 in.)

PRODUCT CODE

ZKWACT Hand Wand Activator

Multimedia Deactivator



DESCRIPTION

The Multimedia Deactivator is an Ultra•Max low profile, powered label deactivator designed for the video rental and general merchandise markets. It deactivates Ultra•Strip labels without affecting or damaging video tapes, audio tapes or credit cards. The deactivator is complemented by the Multimedia Activator in the video rental market.

DIMENSIONS

(LxWxD): 25.6 x 18.4 x 0.64 cm (10 x 7.25 x 0.25 in.)

Weight: 55 kg (1.2 lbs)

PRODUCT CODE*

ZBMMECDE-EUR deactivator only (no power supply)

*not available in the U.S.

Multimedia Activator



DESCRIPTION

The Multimedia Activator activates Ultra•Strip labels on video cassettes, compact discs and digital video discs in video rental stores. The non-powered, swipe-contact Activator is magnetic media safe when the cover is in the down position.

DIMENSIONS

(LxWxD): 20.3 x 30.4 x 3.2 cm (8 x 12 x 1.25 in.)

Weight: 0.71 kg (1.56 lbs.)

PRODUCT CODE

ZKVIDACT

Conveyor Deactivator



DESCRIPTION

The Conveyor Deactivator provides in-line deactivation of Ultra•Max labels and/or RF labels in manufacturing sites, distribution centers, etc. The dual deactivation capability eliminates the need for separate inventories of labeled products. The system connects seamlessly in line with existing conveyor systems without requiring expensive equipment modifications. Deactivation height up to 15 cm (6 in.). Optional overhead deactivation system increases deactivation heights up to 30.5 cm (12 in.). Choice of manual or automatic (via bar code interface) switching between label types.

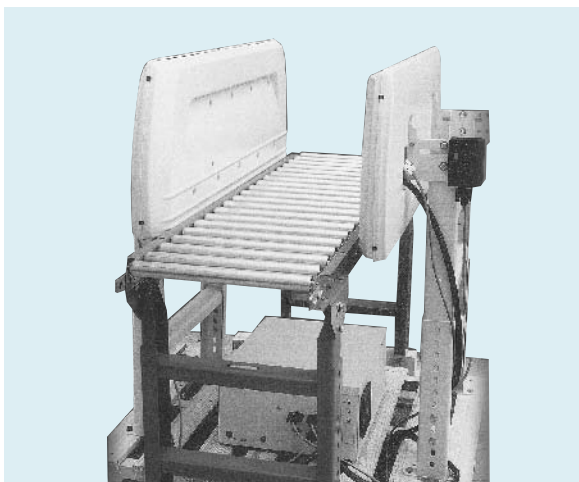
DIMENSIONS

(LxWxD): 3.1 x 8.1 x 69-91 m (10.3 x 2.7 x 2-3 ft.)

PRODUCT CODE

ZBIDE

Industrial Deactivator



DESCRIPTION

The IND-X1000 is an automatic Ultra•Max label activator/deactivator unit designed for source tagging manufacturing facilities and distribution centers. The unit allows users to activate or deactivate labels as needed before shipping to retail stores. The IND-1 1000 will activate one item per second and deactivate one item per three seconds. It will accommodate cartons up to 36 cm (14 in.) in activation mode and up to 46 cm (18 in.) in deactivation mode.

DIMENSIONS

(LxWxD) Activation pod: 123 x 43.1 x 8.6 cm (48 x 17 x 3.7 in.)

(LxWxD) Power Pack: 4.1 x 51 x 23 cm (16 x 20 x 9 in.)

Activation pad weight: 49 kg (109 lb)

Power Pack weight: 19 kg (41 lb)

PRODUCT CODE

ZEINDX1

Benefit Denial Products

Sensormatic benefit denial products are designed to render merchandise unusable if stolen. This is accomplished with either ink tags or locking-type tags. Ink tags contain vials of permanent ink that will ruin garments if someone tries to remove the tag by force. Lock tags are extremely difficult to remove and will damage the merchandise if forced. Benefits include:

- High defeat resistance
- Simple, easy-to-use
- Cost effective
- Highly visible deterrent

IMPORTANT NOTE: Information subject to change without notice. Not all products in the catalog are available worldwide. Consult your local price book for availability.

Ultra•Ink™



DESCRIPTION

Ultra•Ink™ is a combination of an Ultra•Max anti-shoplifting EAS tag and a Benefit Denial ink tag. Ultra•Ink is an economical, ultra lightweight tag. Its small, yet highly visible design and stronger defeat-resistant clutch offer an attractive solution for soft goods protection. Ultra•Ink incorporates Sensormatic's patented breaker plate and dispersion pad to dispense ink and remove the shoplifting motive by rendering stolen merchandise useless or unsellable if the tag is removed through unauthorized force. Ultra•Ink™ contains an unfreezable, non-toxic, aggressive permanent ink that will permanently damage a garment, thereby denying the benefit of shoplifting. Ultra•Ink™ also contains an embedded SuperTag® II bias resonator to provide the highest anti-theft tag detection rate, even through booster bags or metal carts. It is fully compatible with all Ultra•Max systems.

DIMENSIONS

L x W x H: 48.0 mm x 40.0 mm x 16.4 mm (1.89" x 1.57" x 0.65")
Weight: 0.70 oz.

PRODUCT CODES

ZL110BY-WL Ultra•Ink With Lock Blue/Yellow (English Warning Label)
ZL110BY-W Ultra•Ink Without Lock Blue/Yellow (English Warning Label)

InkTag® 3



DESCRIPTION

InkTag 3 is a benefit denial tag containing two vials of permanent ink that will render soft goods unusable if someone attempts to remove the tag by force. InkTag 3 is made up of two separate parts: The top is flat and saucer-shaped and contains the ink vials; the bottom is a cone shaped "clutch" that holds the tag to the merchandise. A warning is written on the top surface of the tag. InkTag 3 contains yellow and blue ink. Use the AMD-1000 detachor to remove InkTag 3.

DIMENSIONS

Diameter: 41.28 mm (1.625 in.)
Depth: 9.4 mm (0.37 in.)
Weight: 19 g. (0.67 oz.)

PRODUCT CODES*

STIT3 InkTag 3 (includes clutch)
ST14085 InkTag 3 Clutch

*not available in Europe

InkMate®



DESCRIPTION

InkMate is a benefit denial tag containing two vials of permanent ink that will render soft goods unusable if someone attempts to remove the tag by force. InkMate is identical to the top portion of an InkTag 3, but does not include the bottom clutch mechanism. Instead, it is designed to be mated to a SuperTag, or Ultra*Gator hard tag. The combination creates both Benefit Denial and EAS protection. A warning is written on the top surface of the tag. InkMate contains yellow and blue ink. Use the SuperTag or Ultra*Gator detachers to remove InkMate. Hard tags are sold separately.

DIMENSIONS

Diameter: 41.28 mm (1.625 in.)
Depth: 9.4 mm (0.37 in.)
Weight: 19 g. (0.67 oz.)

PRODUCT CODES*

ST13866 InkMate D1 (long Pin)
ST14060 InkMate S1 (Medium Pin)

*not available in Europe

Sensor-Ink®



DESCRIPTION

Sensor-Ink tags contain ink that will render soft goods unusable if someone attempts to remove the tag by force. Sensor-Ink can be attached to merchandise using either the SuperClamp or MicroClamp or an EAS hard tag such as SuperTag or Ultra*Gator. Order clamps or hard tags separately. Use the SuperTag detacher for SuperClamp and SuperTags; use the Ultra*Gator detacher for MicroClamp or Ultra*Gator hard tags. Sensor-Ink is available in gray or clear and warns against tampering with the tag, using either English or Icons (non-English use).

DIMENSIONS

(LxWxD) 50.8 x 28.45 x 12.7 mm (2 x 1.12 x 0.5 in.)

Weight: 9 g. (0.32 oz.)

PRODUCT CODES

MJRBGLW Sensor-Ink, gray, red and black ink (MJRBGLI non-English)
 MJRBCLW Sensor-Ink clear tag, red and black ink (MJRBCLI non-English)
 ML50-G SuperClamp, gray
 MX90 MicroClamp

Sensor-Ink® Hang Tag



DESCRIPTION

The Hang Tag is a thin plastic sign that attaches to Sensor-Ink and warns against using force to remove the tag. The warning is written in both English and Spanish.

DIMENSIONS

Length: 120.65 mm (4.75 in.)

Width: 50.8 mm (2 in.)

PRODUCT CODE*

MP-I03 Sensor•Ink Hang Tag

*not available in Europe

SuperClamp



DESCRIPTION

The SuperClamp is a locking device designed to hold either InkMate or Sensor-Ink to soft goods. SuperClamp detaches via the SuperTag detacher, which is a benefit to customers who are already using SuperTag hard tags.

DIMENSIONS

(LxWxD) 5.2 x 3 x 1.8 cm (2 x 1.2 x 0.7 in.)

Weight: 9 g. (0.32 oz.)

PRODUCT CODE

ML50-G SuperClamp, gray

MicroClamp®



DESCRIPTION

The MicroClamp is a locking device designed to hold either InkMate or Sensor-Ink to soft goods. MicroClamp detaches via the Ultra*Gator detacher, which is a benefit to customers who are already using Ultra*Gator or MicroGator hard tags.

DIMENSIONS

Length: 5 cm (2 in.)

Width: 2.8 cm (1.1 in.)

PRODUCT CODES

MX90

MicroLock®



DESCRIPTION

MicroLock attaches to eyewear, fashion jewelry, swimsuits, lingerie and similar merchandise. It provides benefit denial protection by being extremely difficult for thieves to remove without damaging the merchandise. MicroLock is comprised of a clutch and a clamp. Use the AMD-1000 detacher to remove MicroLock.

DIMENSIONS

(LxWxD) (without clamp) 22.1 x 25.4 x 12.7 mm (0.87 x 1 x 0.5 in.)

Clamp length: 22.1 mm (0.87 in.)

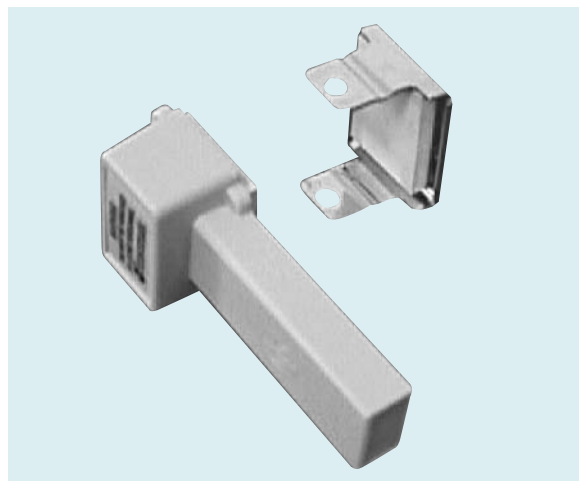
Weight: 9.3 g. (0.33 oz.)

PRODUCT CODE*

ST14205 MicroLock Clutch and Clamp

*not available in Europe

Ultra•Lock®



DESCRIPTION

Ultra•Lock combines benefit denial with EAS to protect eyewear and jewelry from theft without interfering with try-ons. It contains non-deactivatable ULTRA•MAX label material inside a protective cavity and attaches to merchandise via a clamp lock mechanism that comes in four different sizes. Use the AMD-1000 detacher to remove Ultra•Lock. Specify desired clamp size when ordering Ultra•Lock.

DIMENSIONS

Housing length, width, height: 50 x 24 x 12 mm (1.97 x .95 x .47 in.)

Clamp A = 15 mm (.59 in.); Clamp B = 16 mm (.64 in.); Clamp C = 17 mm (.68 in.); Clamp D = 18 mm (.72 in.)

PRODUCT CODES

Ultra•Lock: ZLULOCK-1

Clamp size A: ZLUCLIP-1; Clamp size B: ZLUCLIP-2; Clamp size C: ZLUCLIP-3; Clamp size D: ZLUCLIP-4

InkTag® Hang Tag



DESCRIPTION

The Hang Tag is a thin plastic sign that attaches to the InkTag 3 and warns against using force to remove the tag. The warning is written in both English and Spanish and includes a "Do Not Remove" symbol.

DIMENSIONS

Length: 120.65 mm (4.75 in.)

Width: 50.8 mm (2 in.)

PRODUCT CODE*

ST14073 InkTag 3 Hang Tag

*not available in Europe

Sensormatic®

SmartEAS

Gain A New View Of Your
Loss Prevention & Store Operations



SmartEAS

Gain A New View Of Your Loss Prevention & Store Operations



With *Sensormatic SmartEAS®* business management tools, retailers can shift their loss-prevention strategies from reactive, security-focused approaches to more proactive, predictive and effective models.

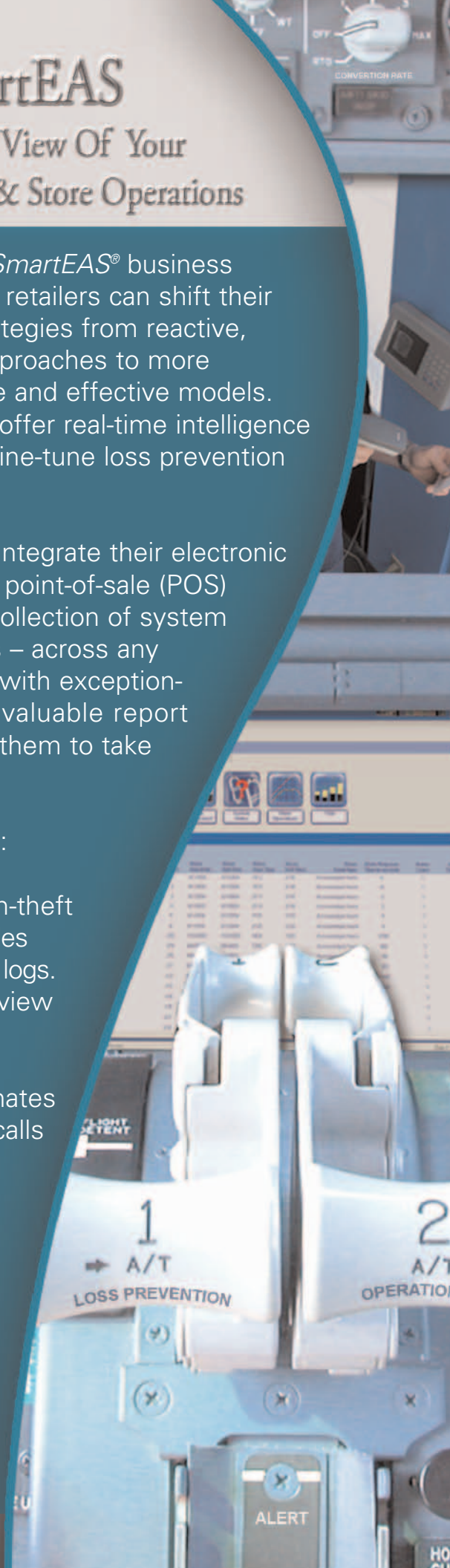
SmartEAS integrated solutions are data-focused and offer real-time intelligence from the entire retail enterprise that can be used to fine-tune loss prevention efforts and enhance store operations.

Our *SmartEAS* solutions do this by helping retailers' integrate their electronic article surveillance (EAS), people-counting, video and point-of-sale (POS) systems into their IT networks. This centralizes the collection of system data – including system performance and diagnostics – across any number of stores, so it can be merged and analyzed with exception-based reporting applications that provide retailers valuable report cards on the performance of their stores and allows them to take action quickly.

Our *SmartEAS* applications and their benefits include:

- **EAS Alarm Management** that helps eliminate non-theft alarms, assures proper responses to theft alarms, provides greater visibility to high-theft items and eliminates paper logs.
- **EAS Video Integration** that allows the retailer to view alarm events that trigger exception reports.
- **EAS System Diagnostics** that alerts store management of changes in system status and automates the service process which avoids unneeded service calls and increases EAS up-time.
- **EAS Traffic Flow** that provides store traffic and conversion rates so the retailer can measure store performance, optimize labor scheduling, evaluate marketing campaigns, and improve sales.

Taken together our *Sensormatic SmartEAS* solutions give you greater command and control of your loss prevention and store operations. So you can keep your profits aloft – and your shrinkage and costs on the ground.



How Does a Sensormatic SmartEAS System Work?

SmartEAS solutions offer a breakthrough in loss prevention and store operations, by allowing retailers to link and collect vital information from the retail devices throughout their stores. Saving time and reducing operational costs, SmartEAS solutions automate many of the functions required to collect, analyze, and report data.

The *SmartEAS* concept has four components:

1. **Collect** valuable business intelligence data from store-level events in a centralized location.
2. **Analyze** all collected data extracting key performance measures defined by retailers to help them more effectively run their businesses.
3. **Report** results of data analysis through exception-based reports that pinpoint high-risk or suspicious occurrences and make it easier for retailers to take immediate action.
4. **Manage** problems and inefficiencies better, setting goals for store managers and sales staff as well as protecting profits through optimized EAS system operation.

Primary applications of our *Sensormatic SmartEAS* product line include EAS alarm management, digital video integration and people-counting. Each of these applications is tied into the retailer's IT network and sends data collected to headquarters for mining and reporting using exception-based reporting package. By combining these applications company-wide, retailers can further reduce external shrink, improve operational efficiencies, and automate EAS maintenance and service through diagnostic capabilities. This also means that valuable POS and video data can be merged together with EAS and people counting data, giving retailers comprehensive insight into the performance of their stores.

IT Benefits

Our *Sensormatic UltraLink™ SmartEAS* system connects directly to the retailer's network, which reduces implementation costs by eliminating the need for extra modems, phone lines and separate networks.

With the *UltraLink SmartEAS* system, retailers have several network communication options including wired and DHCP or fixed IP addressing. Data can be sent to corporate headquarters in real-time or polled at the retailer's discretion to ease any network traffic concerns.

We also provide a data transport and collection software that resides at corporate headquarters. This software collects data from all *UltraLink* units located at each store and across stores, maintains a database of that information, and transfers it to the retailer's reporting package. By providing all these components required for this application's implementation, our SmartEAS system effectively minimizes the IT effort needed for implementation.

SmartEAS INTEGRATED SOLUTION



Exception-Based Reporting. “Don’t fix something if it’s not broken” is an old saying that applies to SmartEAS exception reporting, a time-saving analytical technique for helping management focus on what’s not working. Data exceptions are activities and events that take place that retailers want to know about. Through our reporting offering, customers can predefine what data exceptions they want to be alerted to... This helps management to pinpoint high-risk and suspicious activities as well as to monitor operations better. Data exceptions like no responses to EAS alarms, and high inflows of customer traffic. And it has multiple levels so retailers can drill down to event level details to gain greater insight into the data exception, even view digital video of the event.

	Enhance loss Prevention Strategies	Prevent External Theft	Reduce Non-Theft EAS Alarms	Reduce Chances of EAS System Down Time	Improve Store Operations	Calculate Conversion Rate	Exception- Based Reporting	Digital Video Integration
UltraLink Alarm Management	X	X	X	X	X			X
Alarm Management Reporting Software							X	
UltraLink Traffic Flow					X	X		X
Traffic Flow Reporting Software							X	

UltraLink EAS Alarm Management

Overview

Have you ever observed an EAS alarm sounding as a shopper passes through a retailer’s exit and an employee did not respond to the alarm? Or maybe an employee responded, but the customer was angered and embarrassed because they purchased the item that triggered the alarm. Today, the *Sensormatic UltraLink* Alarm Management solution offers a powerful tool to help retailers maintain the effectiveness of their EAS investment by ensuring employees are responding to alarms and reducing the occurrence of non-theft alarms.

Mounted near a store’s exit, *UltraLink* automatically captures valuable EAS alarm data such as the date, time and location of alarms. Additional details about alarms can also be inputted using the easy to read graphical display and the ATM-style keypad or the optional barcode scanner. This includes:

- Employee response data such as whether or not an employee responded, which employee responded, and how long it took an employee to respond.
- Reason for the alarm
- Receipt and item data such as SKU, transaction number, lane number, cashier number, and more.

Data collected by *UltraLink* is sent via a retailer’s existing network to a centralized location to be analyzed and reported through an exception-based reporting application. Retailers are provided with a report card on EAS activity highlighting data exceptions which allows them to react quickly to enhance their loss prevention strategies, improve the

effectiveness of their EAS systems and reduce non-theft alarms and customer dissatisfaction.

Proper Response to EAS Alarms

Failures to respond or lagging response times to EAS alarms send shoplifters the message that they will not be caught at the exit. *UltraLink* Alarm Management helps retailers pinpoint and quickly address issues that compromise the effectiveness of their EAS investment and their bottom line. By tracking employee response, retailers can reduce losses due to shoplifting as well as track alarm reasons to help enhance their loss prevention strategies. Also, these capabilities eliminate the need for labor-intensive, error-prone paper logs and allow the retailer to take action at the store level as well as across any selected region or the entire chain itself.

Linking Alarms to POS Data

UltraLink's optional bar code scanner allows POS information to be linked to the alarm event. For example, in the case of non-theft alarms, *UltraLink* can tie an alarm to the cashier, transaction, lane and item that triggered it by simply entering the data manually or scanning the barcoded receipt and item. This way, the retailer can identify operational inefficiencies such as EAS tagging compliance, cashier training, and deactivation equipment issues, as well as high-theft items. Retailers can also track recovery dollars for each store in the case of shoplifting incidents caught at the exit.

Linking Alarms (and All Data Exceptions) to Video

A real-time clock synchronizes the *UltraLink* system's alarm management feature to an installed digital video recorder (DVR), so the SmartEAS reporting package can be used to retrieve a video clip of data exceptions taking place for greater insight. This allows the retailer to investigate those events, to ensure proper responses and to identify any operational or training issues that need addressing.

UltraLink EAS System Diagnostics

With *UltraLink's* SmartEAS Rx application, a retailer can continually monitor their EAS systems to ensure they are fully operational. If a change in system status occurs, an exception report can be dispatched immediately to the retailer's corporate headquarters via its network and is viewable in *UltraLink's* reporting package. Automatic alerts can also be generated and sent to the appropriate store management for investigation. This can help eliminate service calls by having simple events handled by in-store staff. What's more, the reporting package can send alerts of more serious issues directly to ADT, automating the service process and increasing EAS up-time.

UltraLink Traffic Flow

Overview

The *UltraLink* EAS Traffic Flow application is a highly accurate, infrared bi-directional pedestrian counter that goes far beyond theft protection to give retailers one of the most valuable, cost effective tools to grow their businesses. By simply capturing the number of people entering and exiting a location, the *UltraLink* Traffic Flow application can supply retailers with critical insight into store performance, vital to maximizing operational efficiencies, customer service, marketing effectiveness, and strategic planning efforts.

Similar to *UltraLink* EAS Alarm Management, the *UltraLink* Traffic Flow application collects and transmits captured data to a centralized location using the retailer's existing network infrastructure. There, traffic flow data can be merged with other retail information, such as POS data, to give retailers a portfolio of key measurements that will help successfully position them in today's competitive environment and make their actions count.

Ultimately, the *UltraLink* Traffic Flow application can provide information that is invaluable for high-level strategic planning by helping retailers assess whether their products and services are drawing the desired customer traffic. It also can give retailers the metrics they need to evaluate and refine their current strategic direction and performance objectives, plus play an important role in developing future strategies.

Measure Conversion Rates

Retailers can boost sales two major ways: One is to turn more of their store traffic into buying customers; the other is to get each customer to buy more. Conversion rate – the ratio of visitors to actual sales transactions – is critical in evaluating multiple key business functions and setting performance goals. Retailers have found that focusing on conversion rate alone can improve sales dramatically by providing comparisons of store performance by location or time, pinpointing valuable customer patterns and trends, and providing more accurate forecasts on store traffic and expected revenue.

Improve Store Operations

Identifying traffic patterns also helps contain payroll costs by optimizing the number of store personnel for various levels of store visitors. With data from *UltraLink* Traffic Flow reporting, management can easily determine peak and low traffic times and ensure the right numbers of employees are scheduled. This supports significant cost savings, improved customer service, and better protection of products from theft during busier times.

Integrating CCTV digital video recorders with *UltraLink* Traffic Flow also allows retailers to have visual feedback on store performance during peak traffic times. Video can be captured at the exits or at the registers to better assess line queuing issues and monitor customer service, further improving store operations and customer service.

Vital Marketing Feedback

The *UltraLink* Traffic Flow application can also benefit marketing efforts with a precise and timely way to assess the effectiveness of an advertising or promotional campaign. By measuring the increase in visitor traffic, the success of marketing efforts can be easily determined and re-evaluated if necessary.

Vital Marketing Feedback

The *UltraLink* Traffic Flow application can also benefit marketing efforts with a precise and timely way to assess the effectiveness of an advertising or promotional campaign. By measuring the increase in visitor traffic, the success of marketing efforts can be easily determined and re-evaluated if necessary.

SmartEAS

IMPORTANT NOTE: Information subject to change without notice. Not all products in the catalog are available worldwide. Consult your local price book for availability.

UltraLink™ Alarm Management



Product Codes

- CBC-4020-216 UltraLink alarm management unit for Digital 216 system
- CBC-4020-M4K UltraLink alarm management unit for either M4K, Ultra•Post, Ultra•Post Plus or APS-1000
- CBC-4020-1 UltraLink alarm management unit – European CE Marked Version

DESCRIPTION

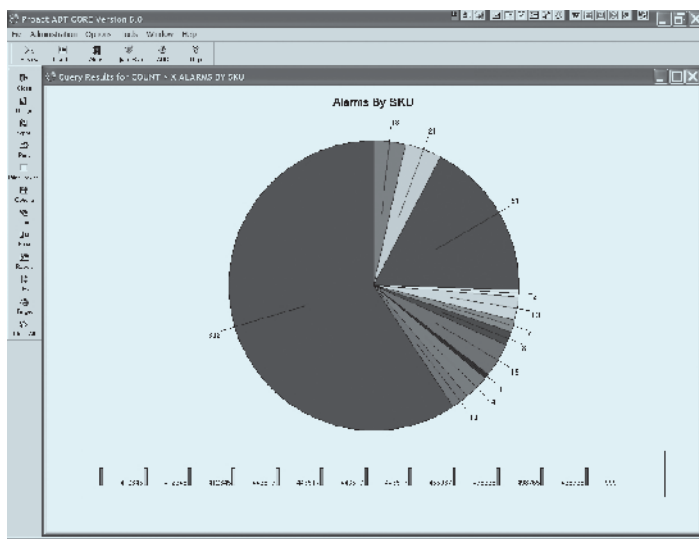
UltraLink provides an easy-to-use system for collecting EAS alarm information at the store level and transmitting the information electronically to a central location for analysis. As an end-to-end solution for retailers, SmartEAS products such as the UltraLink transform loss prevention into a multi-faceted, real-time intelligence system delivering improved operations and profitability.

The UltraLink system helps retailers gather EAS alarm information faster, more accurately, and with less effort than ever before. In addition, it gives corporate loss prevention departments a direct insight into the store's alarm activities and response times, enabling improvements in loss prevention policies and procedures.

FEATURES/BENEFITS

- Improved alarm management information. Electronically integrating alarm reporting with the EAS system provides management with information that can help assess the causes of alarms and implement solutions.
- Eliminates paper logs. The traditional use of paper logs to record alarm information is time consuming as well as costly to convert into a report that management can review.
- Easy for users. The UltraLink is designed with large print, easy to follow menus, and a simple keypad to accommodate the needs of most users. The unit is designed to require minimal training.

SmartEAS® Alarm Management Reporting



DESCRIPTION

The Sensormatic® SmartEAS® Alarm Management Reporting module provides comprehensive, exception-based reports that detail the activity of EAS systems. By using information captured from Sensormatic's UltraLink™ unit, the Alarm Management Reporting module spotlights trends in alarm occurrences, associate response times, reason for alarms and which items and SKUs are causing the alarms. The Alarm Management Reporting module provides the information to allow retailers to take specific and targeted actions. This strengthens an overall loss prevention program as well as preserves the effectiveness of EAS systems by sending the message to shoplifters that all alarms will be addressed.

FEATURES/BENEFITS

- Improves the effectiveness of EAS systems which directly impacts a retailer's bottom line.
- Spots stores, dates and times that are experiencing a high number of theft alarms.
- Identifies reasons for alarms such as which SKUs are highly targeted by shoplifters.
- Tracks and reports on employee responsiveness to alarms.
- Calls attention to training and tagging issues to be resolved.
- Reduces non-theft alarms and improves customer satisfaction.
- Provides system diagnostics and online/offline status to ensure systems are operational.

SPECIFICATIONS

The Alarm Reporting module works with the Sensormatic UltraLink CBC-4020 Alarm Management unit, a component of SmartEAS integrated solutions.

Required In the Store Location

- Sensormatic Ultra•Max® M4K, Ultra•Post® or Ultra•Max ADS EAS Detection System
- Sensormatic UltraLink (CBC-4020) monitoring unit

Required at the Corporate Office Location

- Network connectivity to each store (for data collection)
- Microsoft SQL, Oracle, Sybase, DB2, Teradata, or Informix database
- Windows 2000, XP or 2003 Server

Product Code

- CBC-40SW-AL Alarm Management Reporting Module

UltraLink™ Traffic Flow



DESCRIPTION

The UltraLink Traffic Flow system detects and counts shoppers entering and leaving the store, time-stamps each count, and delivers the information to a central location where reports can be generated for management's review. The system provides retailers with valuable information for judging the success of sales promotions, determining sales closure rates, scheduling employees, designing store layouts and merchandising displays, and more.

The UltraLink Traffic Flow system is offered as a stand alone unit or as an option with the UltraLink alarm management system. Both are part of the Sensormatic SmartEAS® suite of retail solutions.

FEATURES/BENEFITS

- Provides accurate traffic counts. Accurate traffic counts can help retailers measure the success of ad campaigns, identify peaks in the shopping week, help schedule employees more efficiently, and determine sales close rates. At any time of day, store personnel can view the current number of shoppers in the store and see which entrance is the busiest.
- Seamlessly supplies information for meaningful reports. The UltraLink Traffic Flow system delivers its people counting data through the store's network to a central location where it can be sorted, reported, and studied. Reporting software can generate reports in a variety of graphical or statistical formats to suit customer needs.

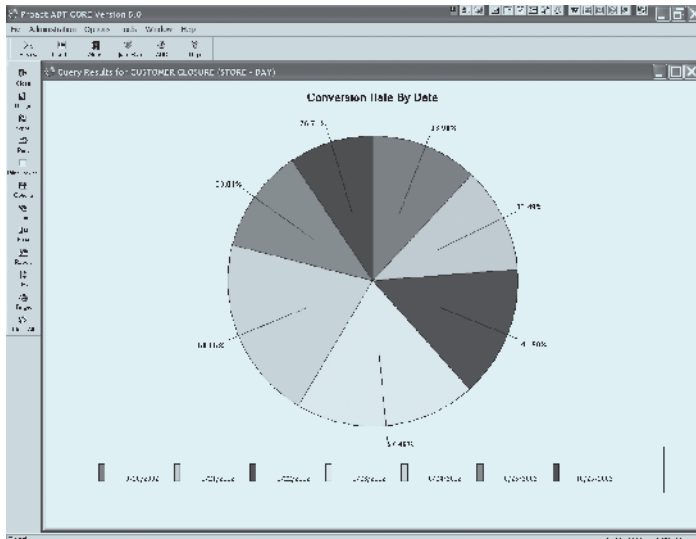
SYSTEM CAPABILITIES

- Door frame or wall mounting
- Exit coverage ranges from .91m up to 4.27m (3' up to 14')
- >95% accuracy at 1.83m (6')
- >90% accuracy at 4.27m (14')
- Tracks IN at single door and OUT at single door
- Produces and displays real-time occupancy total (INs minus OUTs for entire store)
- Produces and displays cumulative Total (total IN and OUT for store)
- Records and displays date/time
- Displays store identifier
- Displays door location
- Displays door type (e.g. "entrance only door" or "exit only door")

Product Codes

- CBC-4030-1D Single Exit, no UltraLink (worldwide)
- CBC-4030-2D Double Exit, no UltraLink (worldwide)
- CBC-4030-1DU Single Exit, with UltraLink (North America only)
- CBC-4030-2DU Double Exit, with UltraLink (North America only)

UltraLink™ Traffic Flow Reporting



SPECIFICATIONS

Required In the Store Location

- Integrates with the UltraLink Traffic Flow System (CBC-4030), a component of SmartEAS integrated solutions.

Required at the Corporate Office Location

- Network connectivity to each store (for data collection)
- Microsoft SQL, Oracle, Sybase, DB2, Teradata, or Informix database
- Windows 2000, XP or 2003 Server

Product Code

- CBC-40SW-TF Traffic Flow Reporting Software

DESCRIPTION

The Sensormatic® UltraLink® Traffic Flow Reporting software utilizes the power of exception-based reporting to help evaluate store customer traffic. Traffic Flow Reporting offers a straightforward, integrated solution that tracks customer traffic and drives operations management actions. Retailers can use this information to make sure their stores are staffed adequately at peak times to provide superior customer service and lower chances of shoplifting as well as validate advertising campaigns. It gives the power to address the causes of previously missed sales opportunities and convert new shoppers to buyers.

FEATURES/BENEFITS

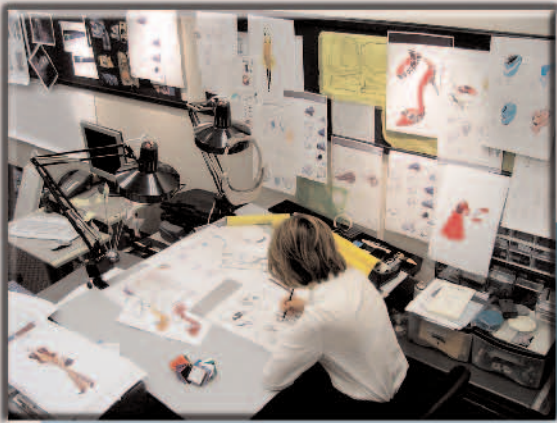
- Helps retailers understand traffic flow at a store, division and corporate level, detailing necessary information for managing staffing, merchandising and operations.
- Provides valuable information such as actionable sales metrics and conversion rates (the ratio of visitors to the store, vs. the number of visitors who made a purchase).
- Allows retailers to ensure optimal visitor to staff ratios for cost savings, improved customer service and effective loss prevention.
- Provides marketing feedback by detailing increases and spikes in customer traffic due to advertising campaigns or store promotions.

Sensormatic[®]

Source Tagging

Design Your Best Loss Prevention
Strategies From The Start





Source Tagging

Design Your Best Loss Prevention Strategies From The Start

Our *Sensormatic* EAS source tagging solutions enable manufacturers to apply anti-theft labels either on or inside merchandise or its package during production or packaging, before goods arrive at the retailer's dock.

Just about any product can be source-tagged, allowing a much wider range of goods to be protected -or even hidden inside during assembly, increasing security that much more. Source-tagged products cover all categories from hard to soft goods and include sporting goods, apparel, domestics, health and beauty care items, home center products, general merchandise, footwear, toys, books, CDs, DVDs, software, batteries, consumer electronics, and even grocery items.

We lead the industry in source-tagging, with almost four billion items source-tagged each year from thousands of manufacturers worldwide and delivered to more than tens of thousands of stores representing hundreds of leading retailers.

With *Sensormatic* source tagging solutions, both manufacturers and retailers gain numerous advantages such as increased inventory turns, greater efficiencies and open merchandising that can boost sales and profits – benefits that never go out of style.



How Do Sensormatic Source Tagging Solutions Work?

Source tagging is the application of EAS anti-theft tags during the manufacturing or packaging process for truly in-store, floor-ready goods.

Applying tags during these production stages gives manufacturers the flexibility to put the tags not only outside the product or package, as in-store labeling typically would, but also inside the product or package to improve aesthetics and security.

The EAS labels used for source tagging by more leading retailers than any other are the *Sensormatic Ultra•Max* family of *Ultra•Strip*® labels. Their acousto-magnetic technology works with foils and metals, has a small label footprint, is reliably deactivated, and can be reactivated when needed, in cases of customer returns. Plus, they can be applied at the industry's highest automation speeds to a much wider range of goods than in-store labeling allows.

Available in sheet and roll formats, *Ultra•Strip* labels can be applied manually, by tabletop application, or by automated application. Since high speed application of anti-theft labels can be applied much more efficiently than in-store labeling, products can get to the selling floor faster. This can boost inventory turns and cut store labor costs. Floor-ready goods also expand open merchandising opportunities, even in high-traffic areas. And, with floor ready products, employees can focus on serving customers better.

Source tagging can place labels on products and packaging more precisely than in-store efforts, so important product information can stay visible and tagging compliance can be more consistent. This will help improve chances customers will buy a product, and ensure faster and more consistent deactivation at checkout.

Source tagging can also be incorporated into Electronic Data Interchange (EDI) processes. With accurate shelf inventory data, manufacturers can keep retailers fully supplied and reduce sales lost to out-of-stock situations. This can give many manufacturers a competitive advantage among key retailers. And once goods are source-tagged, manufacturers can reduce theft in their own facilities by using EAS detectors.

Source Tagging

Please add the following pages after the Source Tagging introduction:

- Details regarding any VAR products and solutions that are appropriate and available to your region

IMPORTANT NOTE: Information subject to change without notice. Not all products in the catalog are available worldwide. Consult your local price book for availability.

Sensormatic[®]

RFID

From Source To Shelf
It's The Knowledge That Counts





RFID

From Source To Shelf
It's The Knowledge That Counts

Radio Frequency Identification (RFID) provides companies with a way to monitor goods throughout the retail supply chain, and Sensormatic RFID solutions build a solid physical foundation for the data gathering and reporting needed to do just that.

Our RFID solutions comprise a complete portfolio of products – each part of a standards-based, open yet integrated architecture – plus services and support. The open architecture ensures that our solutions can operate in multi-vendor RFID environments if required and still reliably deliver high-integrity data to enterprise resource planning (ERP) or warehouse management system (WMS) software applications used to support supply chain logistics.

Our *Sensormatic* RFID portfolio features labels, antennas and readers, as well as device and data management software. All are engineered for exceptional price-performance, scalability and reliability. Our services include site survey and deployment assistance, installation and integration, staff training, and testing of your product's RFID readiness and compliance with specifications of your own or your customers.

Our substantial R&D resources are committed to the long-term, too, so you can be assured that the value of your Sensormatic RFID investment today will grow over time with innovative feature developments.

Compared to a piecemeal RFID approach, our knowledge, expertise, and comprehensive capabilities offer you the means to deploy RFID in your supply chain easier, faster and with less risk and greater confidence the job will be done right, on-time and on-budget. This can translate into lower overall implementation costs, faster return on investment and ultimately a better return on assets. And, in the end, these are the numbers that count most of all.



How Does a Sensormatic RFID System Work?

RFID is a simple concept that has been around since the 1940s. Until now, its application has been mostly proprietary and closed-loop within the boundaries of a company's operations. Only in recent years have technology and standards advancements allowed for its practical application across entire supply chains to reduce shrinkage due to misplaced items, errors, and inventory requirements so businesses can achieve better efficiencies, cash flow and asset management.

To explain RFID briefly, a small electronic tag, comparable to a "license plate" for goods, is placed on a pallet, case and/or item in order to track it through the supply chain. The tag features an embedded radio antenna and a microprocessor encoded with a unique electronic identifier (its Electronic Product Code, or EPC). The 96-bit EPC design ensures a virtually limitless supply of serial numbers for identification purposes. This tag can be applied at any point in the supply chain, but ideally it's affixed at the origins of processing or manufacture of goods.

To track these tags – and the goods they are affixed to – radio-frequency identification (RFID) readers are placed at strategic points in the goods' journey from source to shelf. These reader placements include the floors, doors and even forklifts of warehouses, shipping docks, distribution centers, receiving docks, retail back rooms, and so forth, including store shelves. RFID tags are identified when in the presence of an interrogation signal and do not need "line-of-sight" to be read as bar codes do.

When an RFID tag passes through a verification point, the RFID reader will sense the tag's EPC if it's an active, battery-powered tag or will emit RFID waves to induce a current in the antenna of a passive, non-battery tag. The data is then read and sent to a database containing a larger data record of what's tagged, plus information like where and when it was manufactured, its current location and status, and so on.

RFID Solutions

The following contacts are available to provide information for customer inquiries regarding RFID products, testing, services or implementations:

- In North America: Kevin Lynch at kelynych@adt.com
- In other areas: Your regional marketing group will send pages to insert in this section. These pages will include contact details.

IMPORTANT NOTE: Information subject to change without notice. Not all products in the catalog are available worldwide. Consult your local price book for availability.